

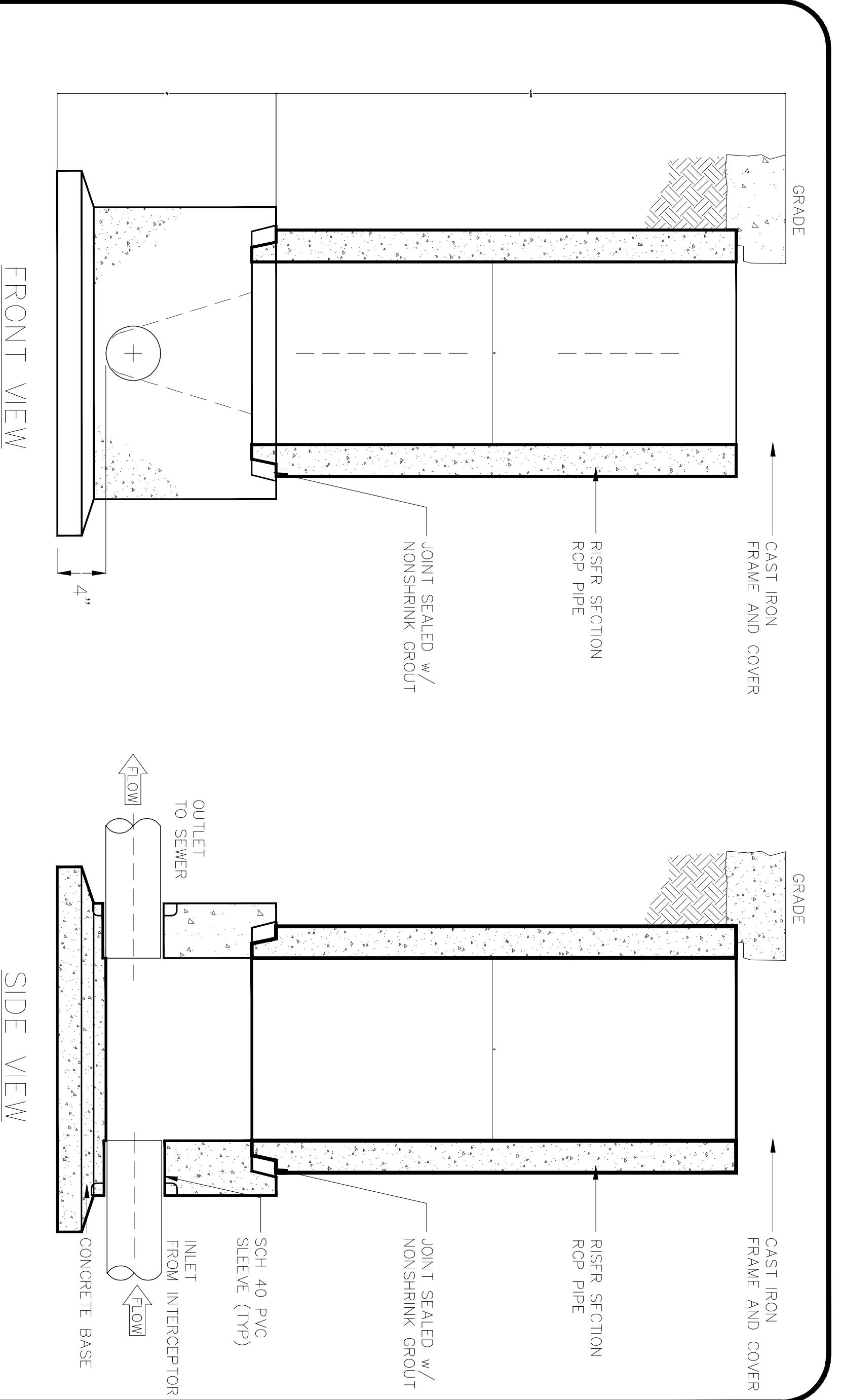
Rev	By	Date

TRIMCOS DESIGN & ENG.
 11222 RICHMOND AVE.
 SUITE# 225 HOUSTON TX, 77082
 (281) 558-9696
 F-3926

SCHLOTZSKY'S VICTORY LAKES TOWN CENTER
 TRACK 7A, NEC INTERSTATE HWY 45 & F.M.646
 LEAGUE CITY TEXAS 77000

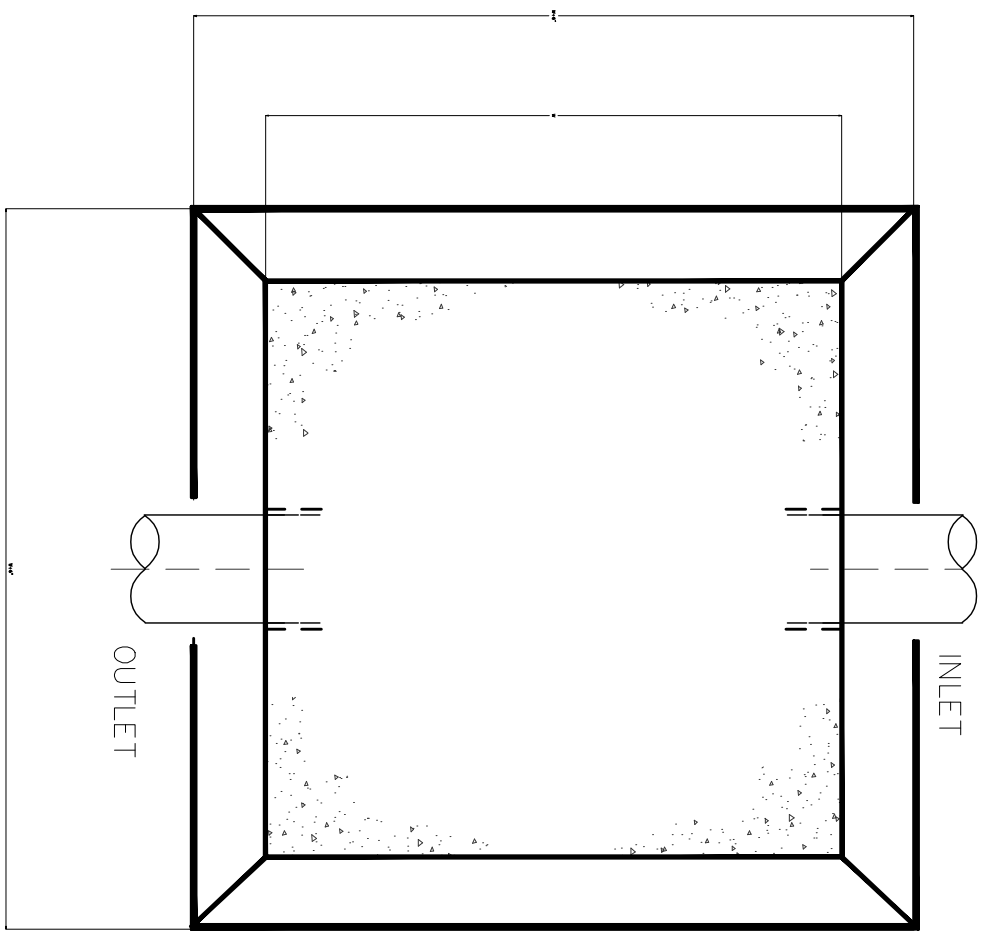
ARCH
Associates, L.L.C.
 ARCHITECTS - PLANNERS
 15734 Brandeis Green Dr.
 Houston, TX. 77083
 (832) 228-8128

Date	07-14-2010
Scale	AS SHOWN
Drawn by	AS SHOWN
Job#:	
SHEET NO.	P-03



MODEL	DIAMETER IN & OUT PIPE SIZE	WIDTH "W"
SWB-154	15" 4"	24"
SWB-156	15" 6"	24"
SWB-184	18" 4"	28"
SWB-186	18" 6"	28"
SWB-244	24" 4"	34"
SWB-246	24" 6"	34"

- NOTES
1. SAMPLING WELL MUST BE INSTALLED UNDER A SEPARATE PLUMBING PERMIT.
 2. USE 15" TAG R.C.P. FOR INSTALLATION FOR INSTALLATION 6'-0" DEEP AND LESS.
 3. USE 24" TAG R.C.P. FOR INSTALLATION GREATER THAN 6'-0" DEEP. (STD RING AND M.H. COVER REQUIRED)
 4. SAMPLING WELL MUST BE SET IN A CIRCULAR OR SQUARE CONCRETE PAD (1'-0" GREATER THAN OUTSIDE DIAMETER OF PIPE.)
 5. INSIDE INSTALLATION NOT PERMITTED, WHERE OUTSIDE INSTALLATION IS POSSIBLE.
 6. INSTALLATION INSIDE BLDG MUST BE POURED IN PLACE (15"MIN) NO CONCRETE PIPE IS PERMITTED. (AIR-TIGHT COVER REQUIRED.)
 7. LAWN INSTALLATION MUST BE 4" ABOVE FINISHED GRADE.
 8. DRIVE & SIDEWALK INSTALLATION MUST BE BROUGHT TO FINISHED GRADE
 9. TO BE INSTALLED ON PRIVATE PROPERTY, IN AN ACCESSIBLE LOCATION TO CITY PERSONNEL.



©Park, 2008

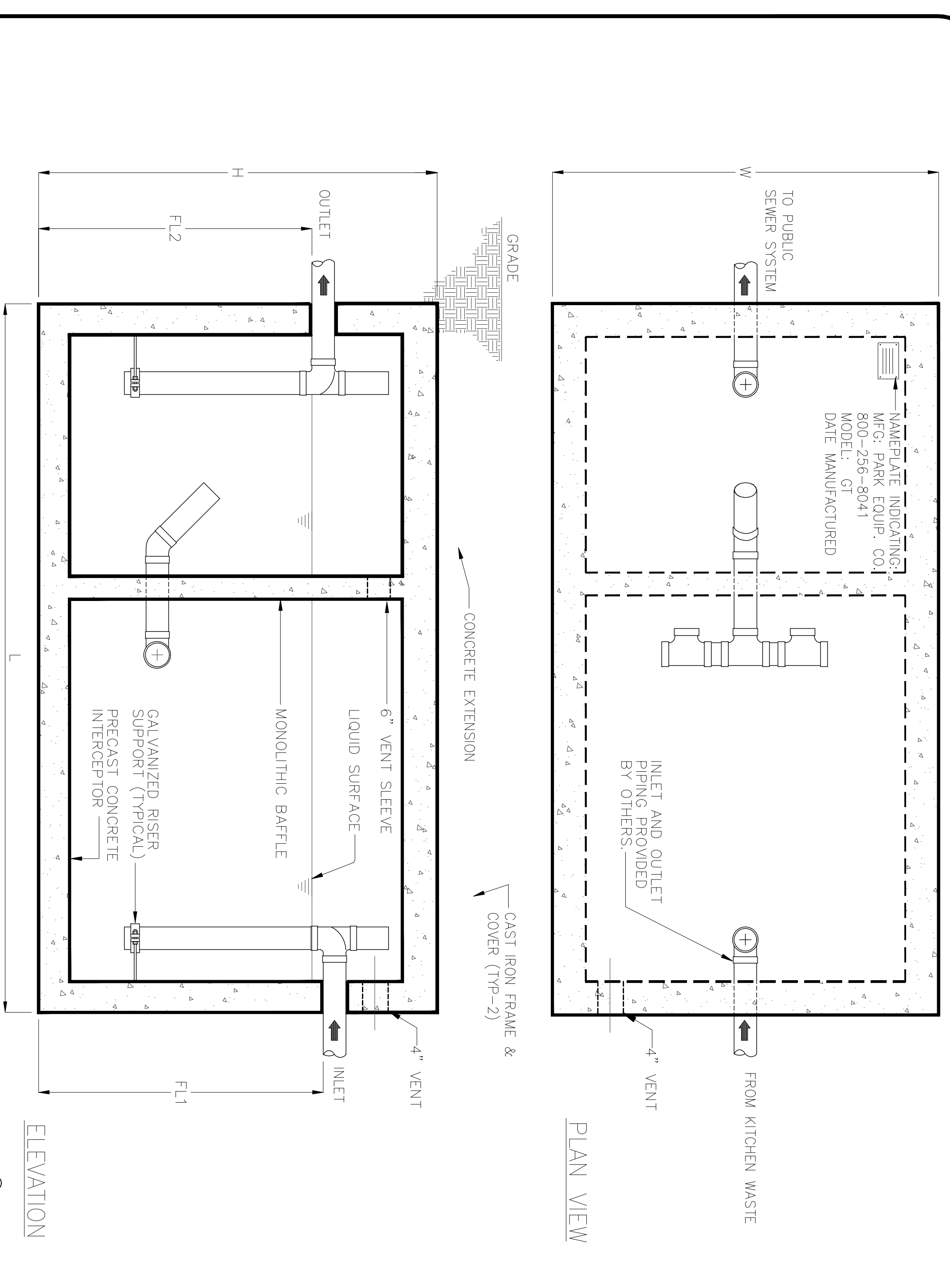
ENVIRONMENTAL EQUIPMENT
PARK
 888-611-PARK
 www.park-usa.com

Expect the Best™

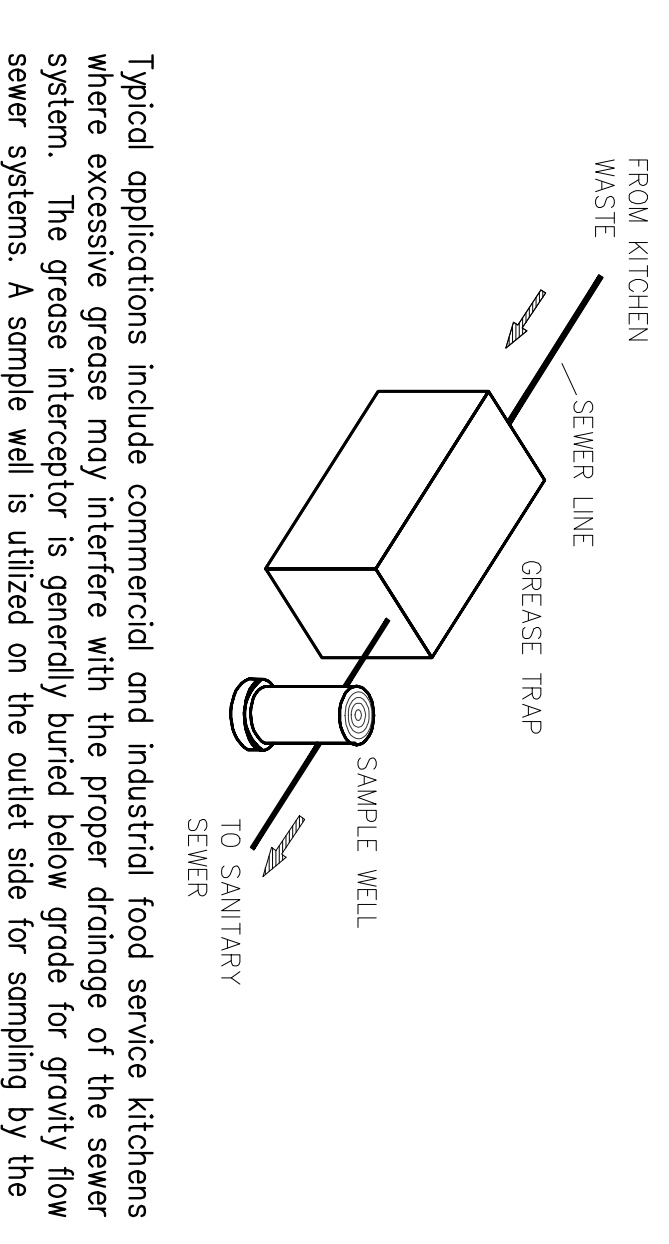
SAMPLE WELL BASIN

C.I. CASTINGS: Cast iron frames and grates are manufactured of grey cast iron conforming to ASTM A48-76 Class 30. Heavy-Duty AASHTO H-20

SCALE	NONE	DWG. NO.	SWB-1	REV.	A
DATE	01/08				



© Park, 2006



Typical applications include commercial and industrial food service kitchens where excessive grease may interfere with the proper drainage of the sewer system. The grease interceptor is generally buried below grade for gravity flow sewer systems. A sample well is utilized on the outlet side for sampling by the local water authority.

Specifications

CONCRETE : Class 1 concrete with design strength of 4500 PSI at 28 days. Unit is of monolithic construction of floor, first stage of wall and baffle with sectional riser to required depth. (Monolithic baffle required, slide-in type is not acceptable)

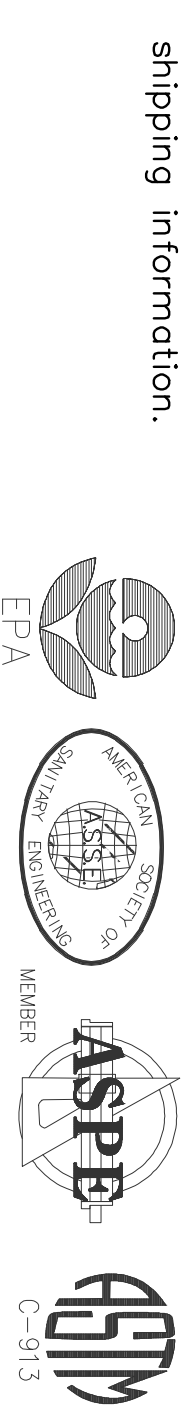
REINFORCEMENT: Grade 60 reinforced with steel rebar conforming to ASTM A615 on required centers or equal.

C.I. CASTINGS: Manhole frames, covers or grates are manufactured of grey cast iron conforming to ASTM A48-76 Class 30. Manhole shall be nominal 24 inch diameter and be traffic duty.

Engineering Data

The grease interceptor is structurally & hydraulically engineered to conform to regional plumbing codes recommended in most cities. Consult with local authorities for specific application requirements.

Shop drawings shall include complete structural & buoyancy calculations certified by a licensed professional engineer. Consult with Park Equipment Company for exact excavation dimensions & shipping information.



ENVIRONMENTAL EQUIPMENT
PARK
 888-611-PARK
 www.park-usa.com

Expect the Best™

GREASE INTERCEPTOR SERIES GT
 500 THRU 4000 GALLON CAPACITY

SCALE	NONE	DWG. NO.	GT-1	REV.	A
DATE	12/06				