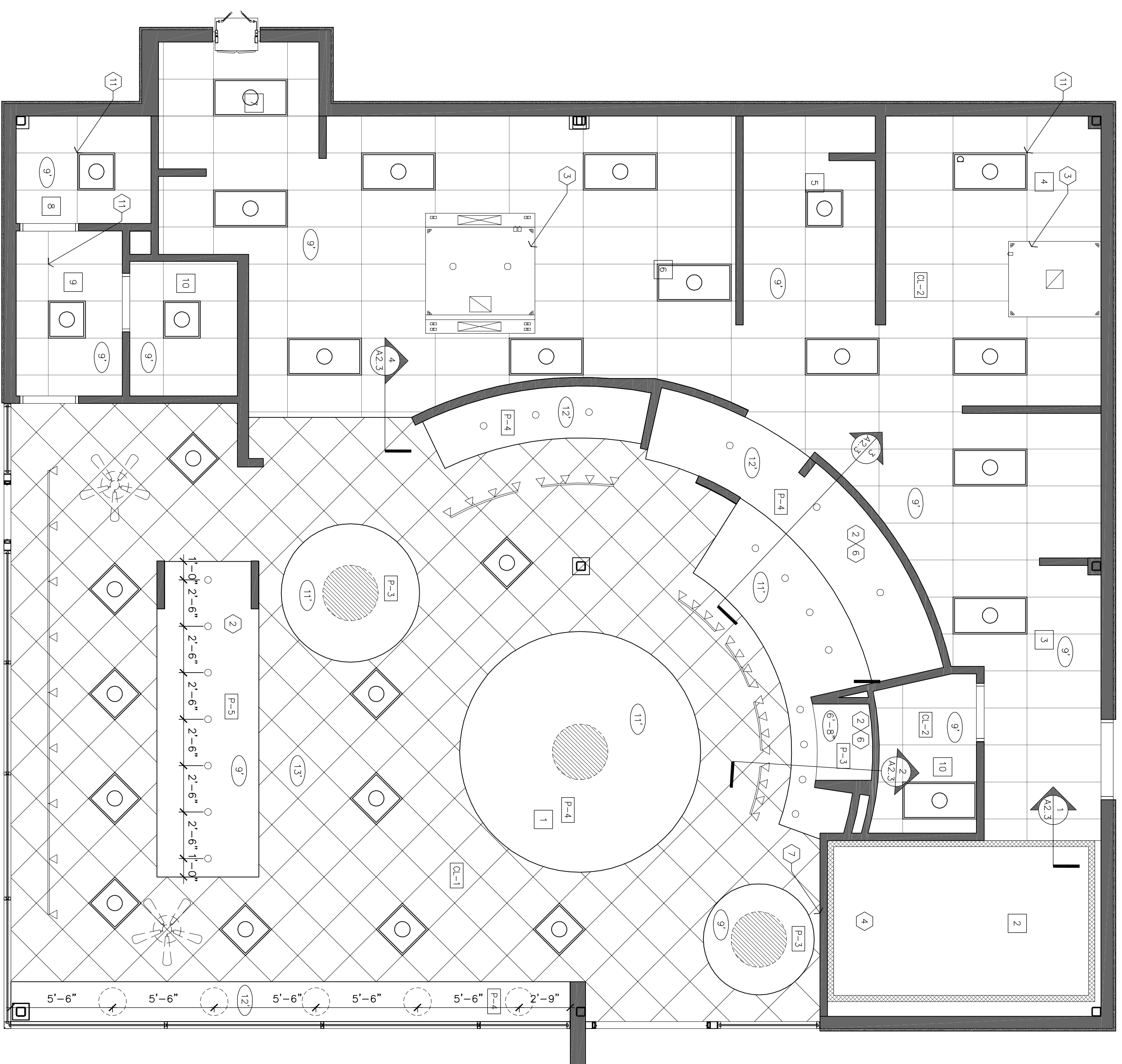
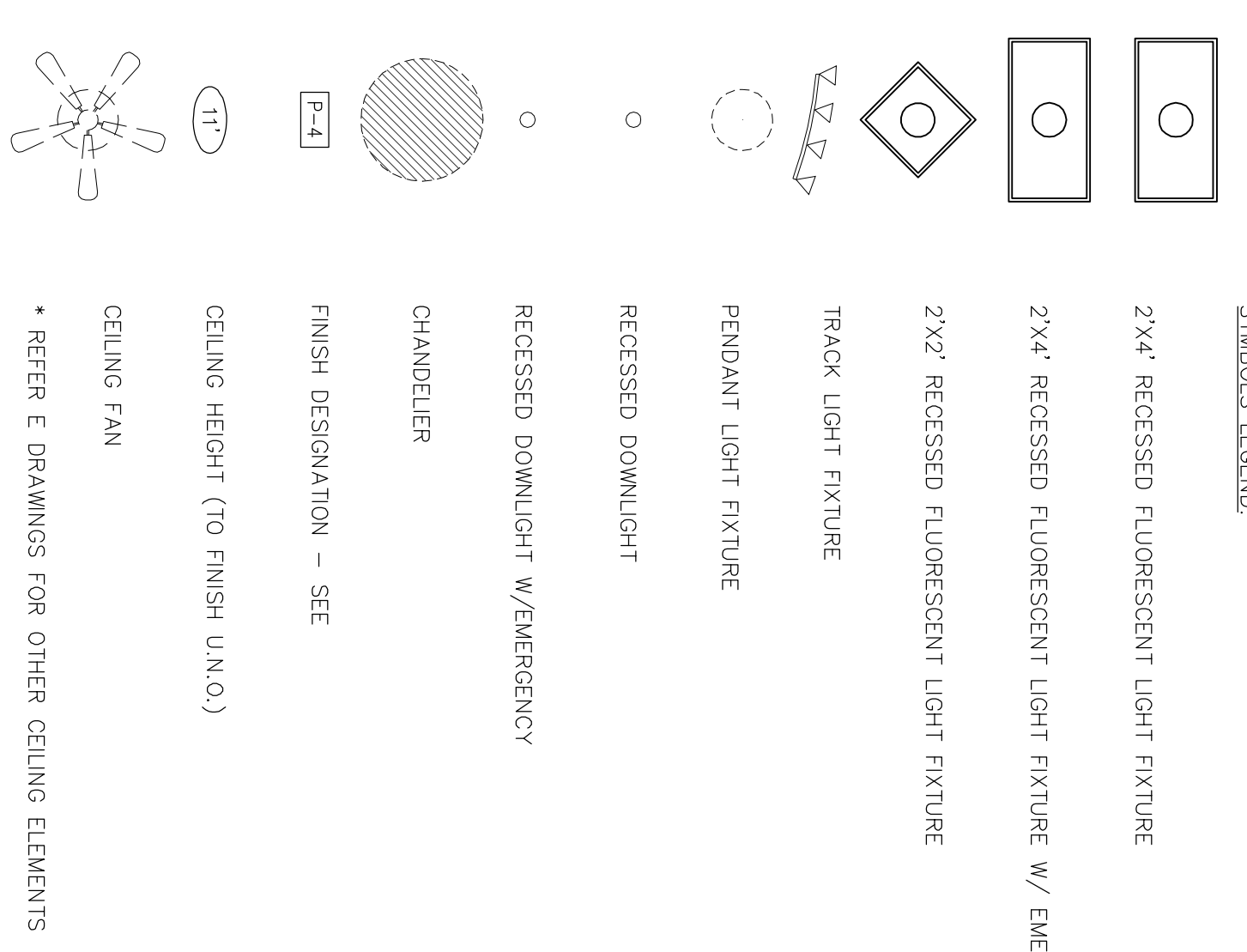


**A. REFLECTED CEILING PLAN**  
 SCALE = 1/4" = 1'-0"  
 AREA: 3,000 SQ.FT.



- CEILING PLAN KEY NOTES:**
- 1) 5/8" GYP. BD. OVER USG DIRECT SUSPENSION SYSTEM OR EQUAL.
  - 2) 5/8" GYP. BD. OVER LIGHT GA. STL. FRAMING AS DETAILED.
  - 3) HOOD ABOVE. - SEE MECHANICAL DRAWINGS.
  - 4) LINE OF COOLER/FREEZER BELOW.
  - 5) CENTER LIGHT FIXTURE OVER TABLE TOP.
  - 6) FRAME CURVED SOFFIT W/ SPECIAL CURVED TRACK & ANGLE COMPONENTS. STUD SPACING SHALL BE 8" O.C. TO ACCOMMODATE RADIUS AS NOTED.
  - 7) 5/8" GYP. BD. BULKHEAD.
  - 8) CENTER GRID W/ 1 SPACE OR BETWEEN WALLS OR BULKHEAD AS SHOWN.
  - 9) SUSPENDED SHELVING UNIT
  - 10) SOFFIT CABINET TO BE FURNISHED BY OWNERS MILLWORK VENDOR & INSTALLED BY G.C. REFER TO MILLWORK SCHEDULE SHEET A1.0
  - 11) START POINT FOR CEILING GRID.



Rev.	By	Date

**SCHLOTZSKY'S**  
**@ VICTORY LAKETOWN CENTER**  
 TRACT 7A NEC INTERSTATE HWY 45 & F.M.646  
 LEAGUE CITY, TEXAS 77573

**ARCH**  
 WOO ASSOCIATES, LLC.  
 ARCHITECTS - PLANNERS  
 13734 Branford Green Dr.  
 Houston, TX 77085  
 (281) 530-3192

Date	05-26-2010
Scale	AS SHOWN
Drawn by	KW
Job#	VICTORY LAKE

**A2.3**