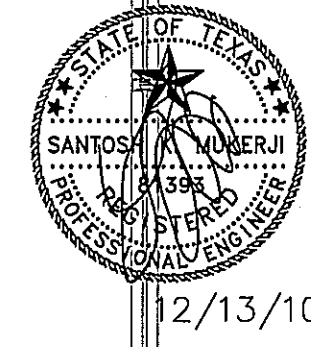


NOTE
THE SYSTEM SHALL BE
CONTROLLED BY A MANUAL
CHANGEOVER OR CAPABLE OF
RETAINING PROGRAMMING AND
TIME SETTING DURING DUAL
SET-POINT THERMOSTAT, A
LOSS OF POWER FOR A PERIOD
OF AT LEAST 10 HOURS.

MECHANICAL GENERAL NOTES

1. THE CONTRACTOR SHALL INSTALL A COMPLETE WORKABLE HVAC SYSTEM IN ACCORDANCE WITH, BUT NOT LIMITED TO, THE ATTACHED PLANS AND SPECIFICATIONS, THE FOLLOWING LISTED REQUIREMENTS, MATERIALS AND EQUIPMENT ARE THE MINIMUM STANDARDS OF QUALITY, CAPACITY, AND WORKMANSHIP. THIS CONTRACTOR SHALL COMPLY WITH THE LATEST EDITION OF THE SOUTHERN STANDARD BUILDING CODE, AND ALL APPLICABLE LOCAL AND STATE CODES; OBTAIN ALL PERMITS AND PAY ALL FEES REQUIRED TO PERFORM THIS WORK. ALL MATERIALS SHALL BE NEW AND UNDAMAGED. ALL EQUIPMENT SHALL BE U.L. LISTED AND/OR APPROVED BY THE AUTHORITY HAVING JURISDICTION OVER SUCH EQUIPMENT; AND SHALL BE WARRANTED BY THIS CONTRACTOR FOR A PERIOD OF ONE YEAR FROM THE DATE OF ACCEPTANCE, ROOFTOP UNIT COMPRESSORS SHALL HAVE 5 YEAR MANUFACTURES WARENTEE.
2. THIS MECHANICAL CONTRACTOR SHALL BE RESPONSIBLE FOR COORDINATION WITH ALL OTHER TRADES AND WITH ANY EXISTING JOBSITE CONDITIONS PRIOR TO THE INSTALLATION AND/OR FABRICATION OF ANY MATERIALS OR EQUIPMENT. LOCATE ALL ITEMS TO PROVIDE ADEQUATE CLEARANCE FOR ARCHITECTURAL DESIGN, AND TO PROVIDE PROPER OPERATION AND SERVICE FOR ALL EQUIPMENT.
3. ALL DUCTWORK SIZES SHOWN ON THE DRAWING ARE NET FREE INSIDE CLEAR DIMENSIONS, THIS MECHANICAL CONTRACTOR SHALL PROVIDE ALL SUPPLY DIFFUSERS AND RETURN AIR GRILLES AS REQUIRED TO ACHIEVE THE AIR DISTRIBUTION SHOWN ON M-2. VERIFY THE FINAL LOCATION OF ALL CEILING DIFFUSERS AND GRILLES WITH THE ARCHITECT PRIOR TO INSTALLATION.
4. THIS CONTRACTOR SHALL VERIFY THE FINAL LOCATION OF ALL ROOM TEMPATURE SENSORS WITH THE ARCHITECT PRIOR TO THEIR INSTALLATION.
5. DUCTWORK
 - A. SHALL BE RIGID DUCT BOARD WITH 1 1/2" THICK FIBERGLASS INSULATION WITH FOIL VAPOR BARRIER. ALL JOINTS AND SEAMS SEALED IN MANNER TO PROVIDE A COMPLETE VAPOR TIGHT ENCLOSURE. ALL DUCTWORK SHALL BE FABRICATED IN ACCORDANCE WITH THE LATEST ISSUE OF THE SMANCA STANDARDS FOR LOW VELOCITY DUCTWORK. DUCT SIZES INDICATED ON THE DRAWINGS ARE NET FREE INSIDE CLEAR DIMENSIONS. PROVIDE TURNING VANES IN ALL ELBOWS, AND MANUAL VOLUME DAMPERS IN ALL BRANCHES. PROVIDE SPLITTER DAMPERS IN ALL DIVISIONS. PROVIDE OTHER SIMILAR DEVICES AS REQUIRED TO PROPERLY BALANCE THE SYSTEM.
 - B. FLEXIBLE DUCTWORK SHALL BE INSULATED TYPE R-6 AND SHALL NOT EXCEED 8 FEET IN LENGTH; BENDS SHALL NOT RESTRICT THE INSIDE CROOS-SECTIONAL AREA OF THE DUCT; AND CONNECTION SHALL BE MADE AS DIRECT AS POSSIBLE TO THE MAIN SUPPLY.
6. THE MECHANICAL CONTRACTOR SHALL VERIFY UNIT LOCATION AND ROUGH-IN WITH LANDLORD'S ARCHITECT PRIOR TO INSTALLATION. PROVIDE 2-4X4X6 CONTINUOUS AROUND DECK PENETRATIONS.
7. GENERAL CONTRACTOR SHALL NOT MAKE ANY ROOF OR WALL PENETRATIONS WITHOUT LANDLORD'S APPROVAL. ALL SUCH PENETRATION SHALL BE MADE BY CONTRACTORS APPROVED BY LANDLORD.
8. A/C GRILLES SHALL BE TYPICAL 24" x 24" PERFORATED LAY-IN AT SUPPLY GRILES - PROVIDE VOLUMN DAMPER AND ADJUSTABLE BLADE DEFLECTORS.
9. GRILLES SHALL BE LOCATED AS SHOWN ON HVAC PLAN.



CALCULATIONS FOR OUTSIDE AIR:
(AS PER TABLE 4-1, U.M.C.)

OUTDOOR AIR REQUIREMENTS FOR VENTILATION:

KITCHEN AREA:
660 S.F. x 0.3 = 198 CFM

DINING AREA:
1400 S.F. x 0.5 = 700 CFM

OFFICE AREA:
50 S.F. x 0.20 = 10 CFM

TOTAL = 998 CFM

OUTSIDE AIR FLOW RATE (CFM)=30 %

NOTE:
INSTALL (2) 75 CFM EXHAUST FANS IN:
-RESTROOM (SWITCHES AT DOOR)

MECHANICAL LEGEND	
	EXHAUST DIFUSER
	EXHAUST DIFUSER
	RETURN AIR
	CFM VOLUME DIFUSER SIZE
	FLEXIBLE DUCT & DIAMETER
	EXHAUST FAN
	A/C SPLIT UNIT
	HOOD EXHAUST FAN
	MAKE UP

MECHANICAL PLAN
Scale: 3/8"=1'-0"

Rev.	By	Date

TRIMCOS DESIGN & ENG.
11222 RICHMOND AVE.
SUITE# 225 HOUSTON TX, 77082
(281) 558-9696
F-3926

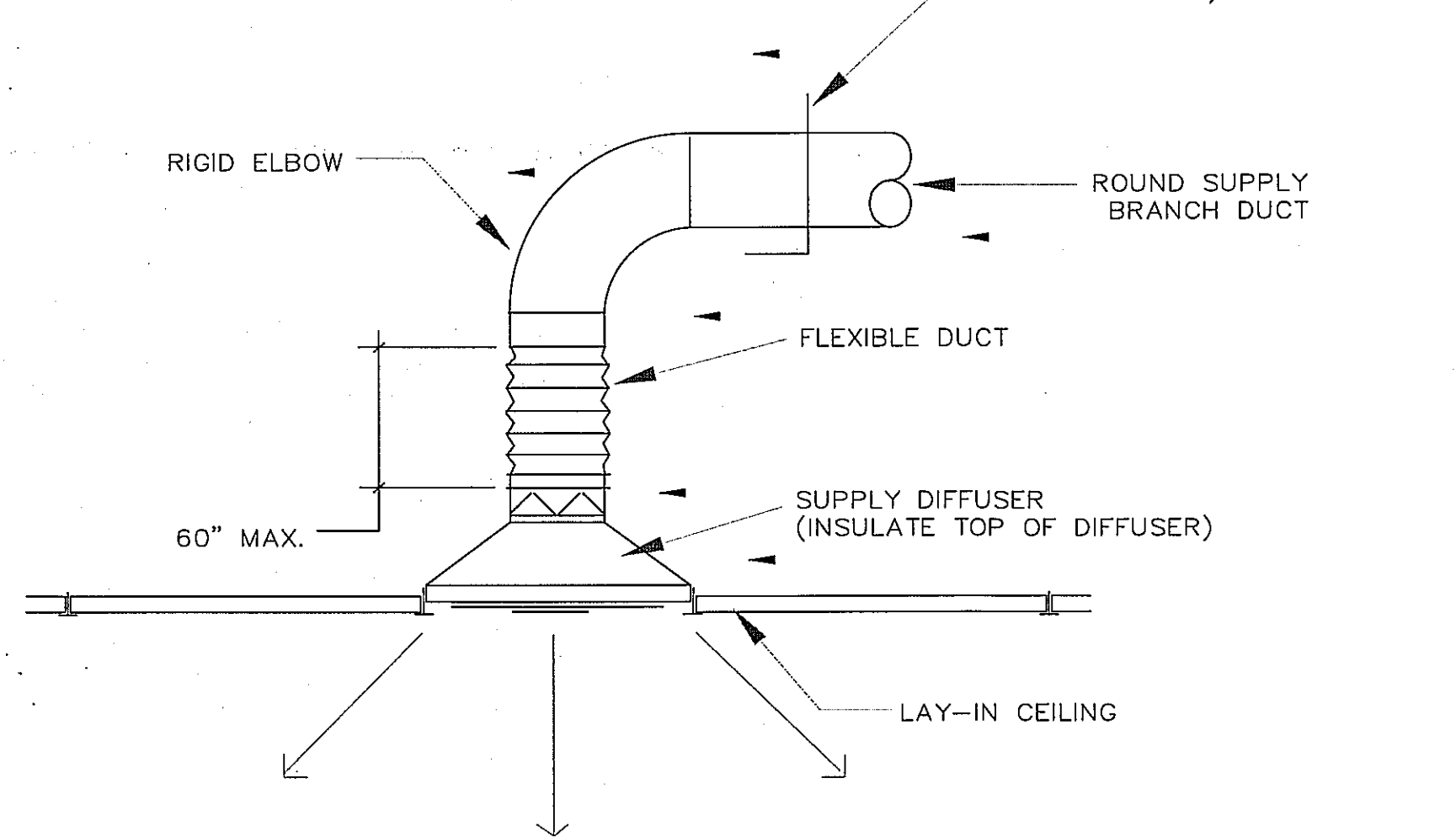
SCHLOTZSKY'S VICTORY LAKES TOWN CENTER
TRACK 7A, NEC INTERSTATE HWY 45 & F.M.646
LEAGUE CITY TEXAS 77000

ARCH
Woo Associates, LLC.
ARCHITECTS - PLANNERS
13734 Branford Green Dr.
Houston, TX. 77083
(832) 228-8128

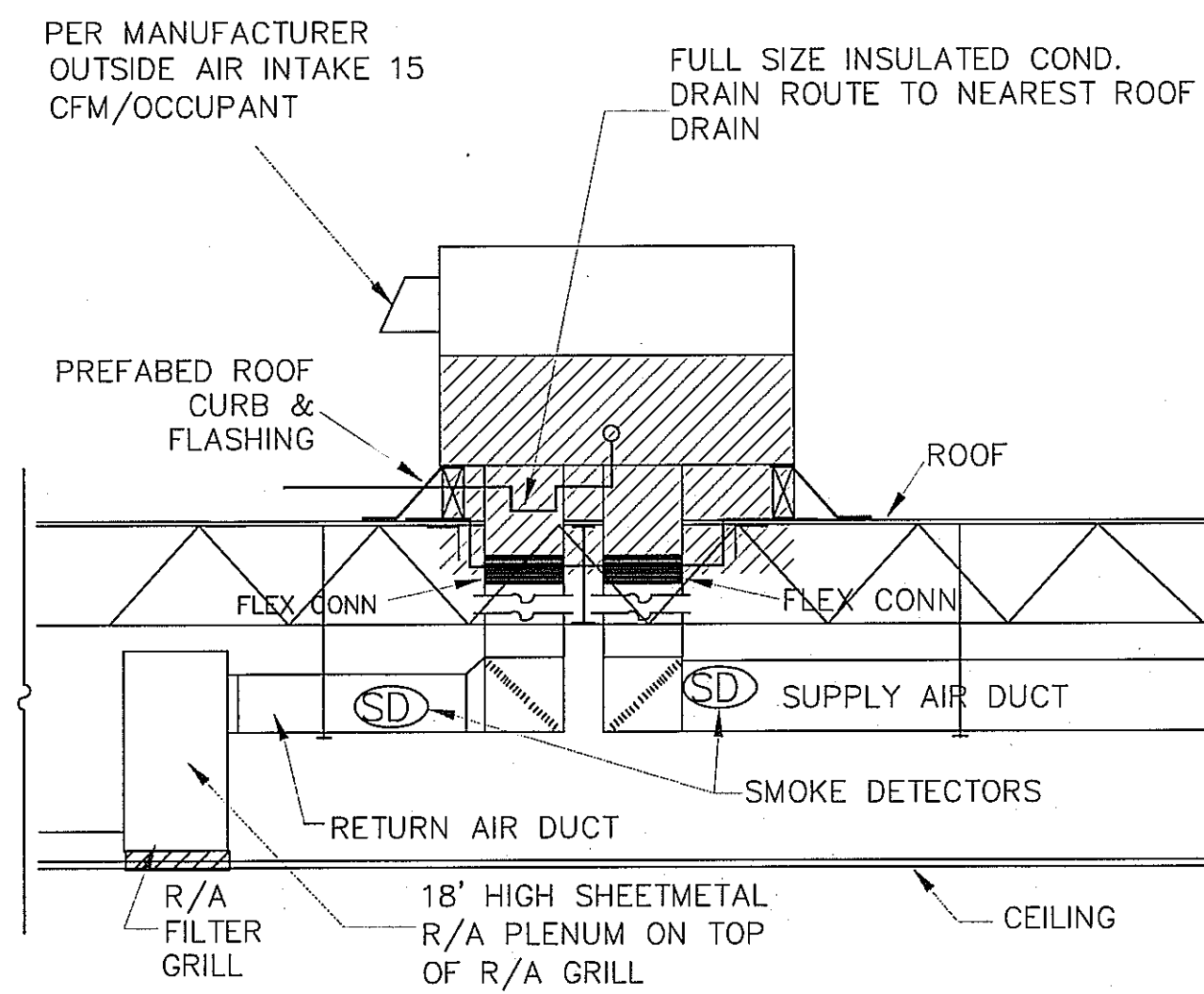
Date	07-14-2010
Scale	AS SHOWN
Drawn by	
Job#:	
SHEET NO:	

M-01

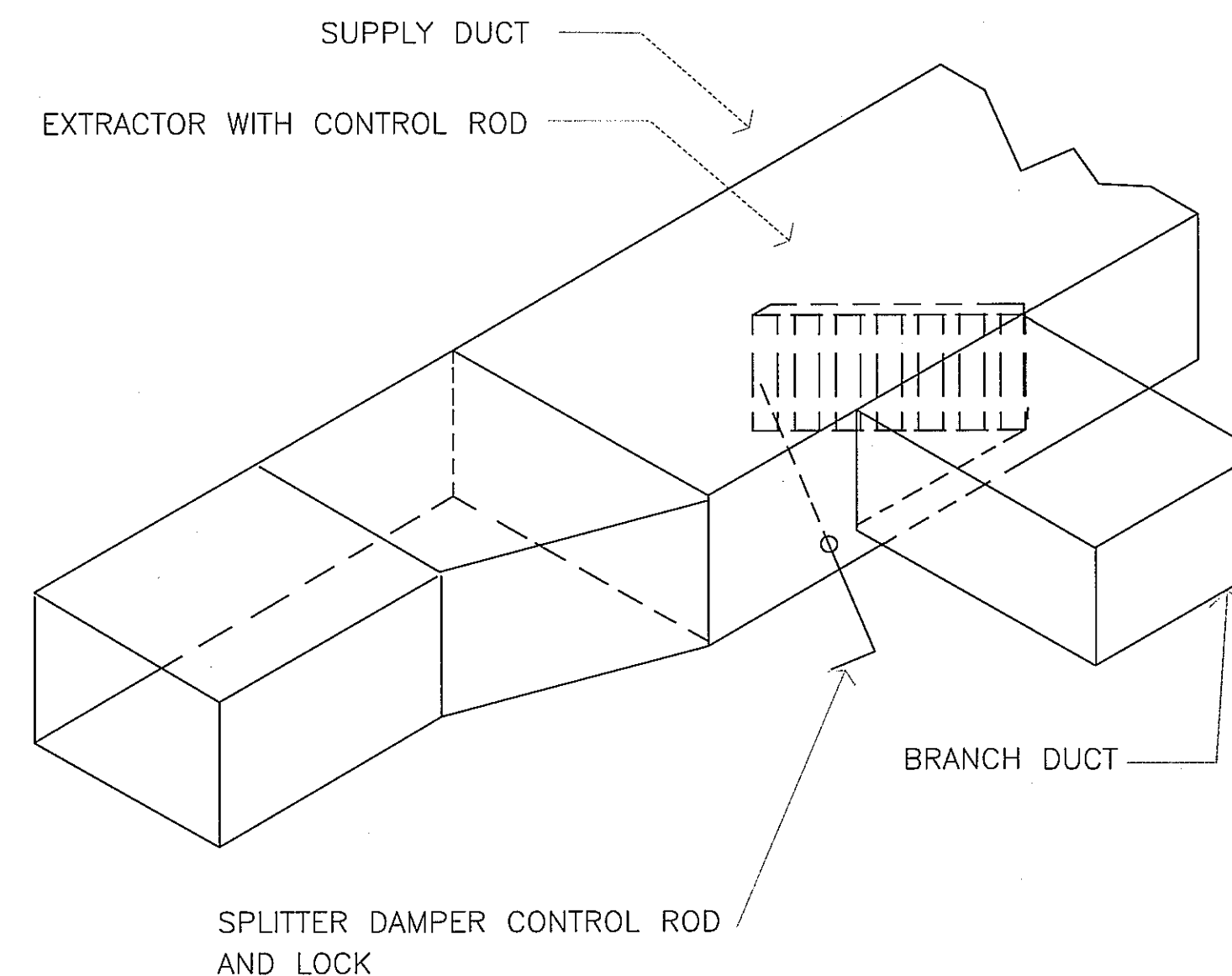
NOTE:
FLEXIBLE DUCT SHALL NOT BE USED
AS AN ELBOW.



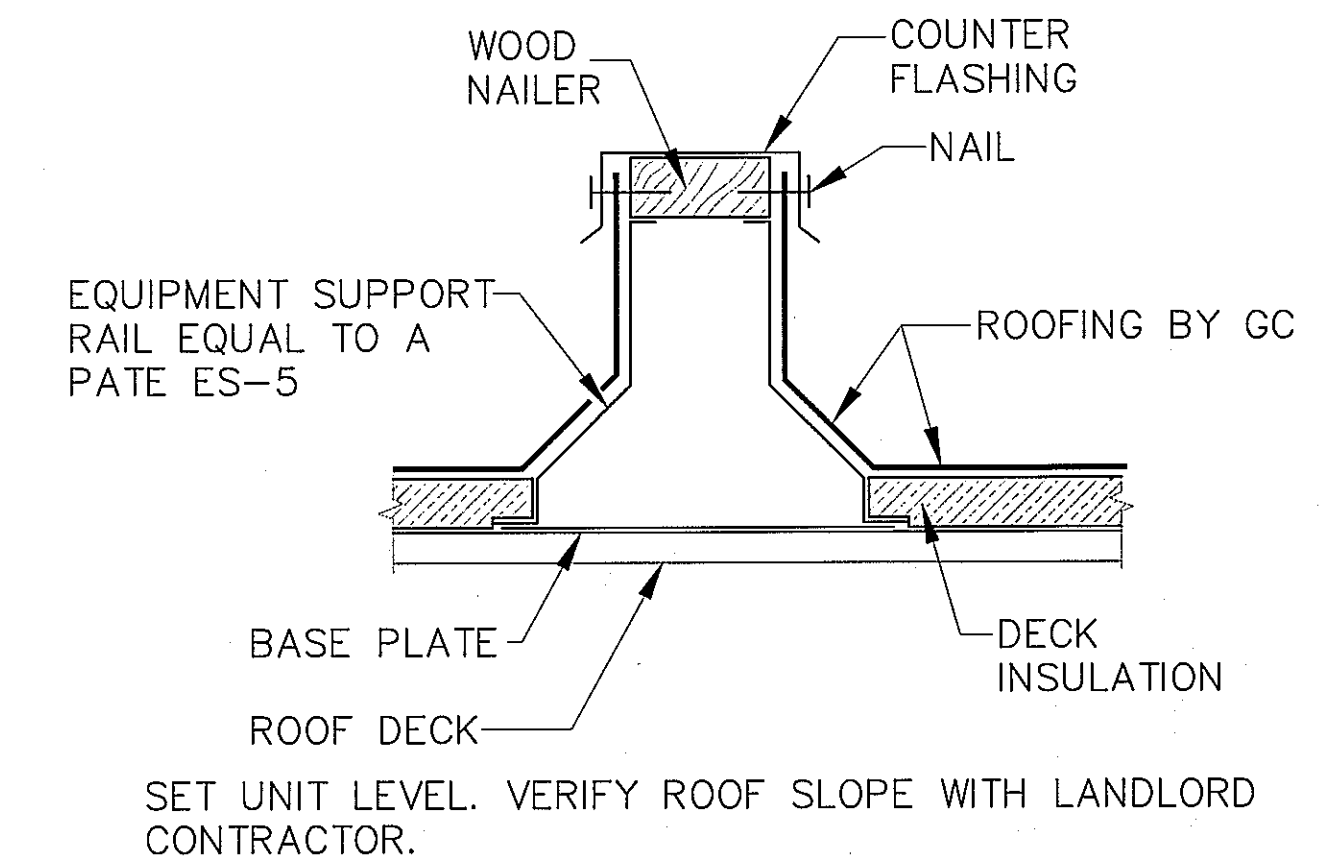
DIFFUSER CLOSED CEILING
NOT TO SCALE



ROOF TOP SCHEMATIC DETAIL
NOT TO SCALE



HVAC DUCT DETAIL
NOT TO SCALE



NOTE:
ALL ROOF MOUNTED EQUIPMENT TO RESIST
UPLIFT IN 120 MPH. WIND EVENT (COLC 22-38)

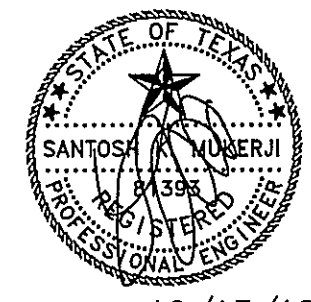
EQUIPMENT CURB
NOT TO SCALE

NOTE:

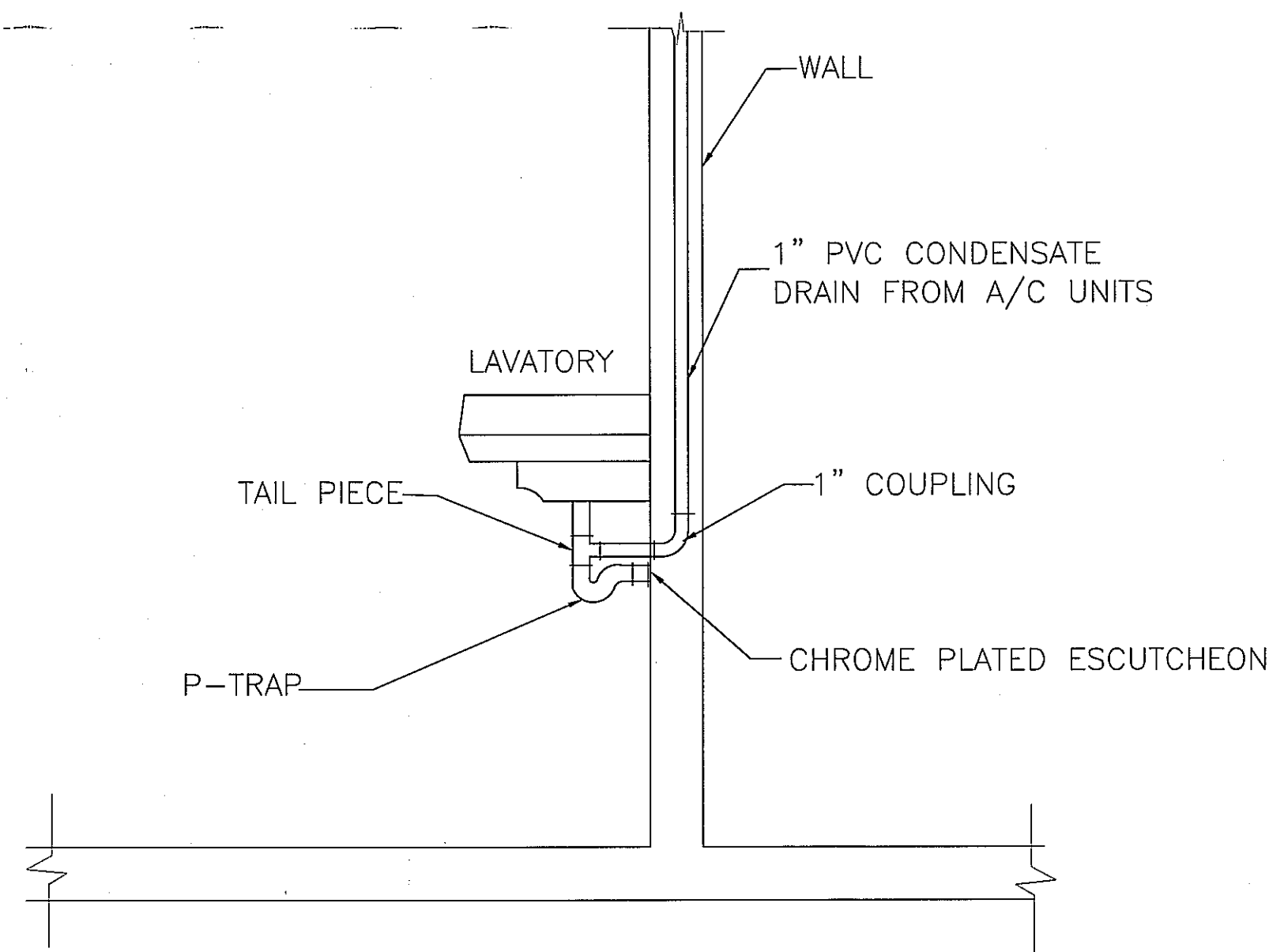
CONSTRUCTION DOCUMENTS SHALL REQUIRE THAT WITHIN 90 DAYS AFTER THE DATE OF SYSTEM ACCEPTANCE RECORD DRAWINGS OF THE ACTUAL INSTALLATION BE PROVIDED TO THE BUILDING OWNER OR THE DESIGNATED REPRESENTATIVE OF THE BUILDING OWNER. RECORD DRAWINGS SHALL INCLUDE AS A MINIMUM THE LOCATION AND PERFORMANCE DATA ON EACH PIECE OF EQUIPMENT, GENERAL CONFIGURATION OF DUCT AND PIPE DISTRIBUTION SYSTEM INCLUDING SIZES, AND THE TERMINAL AIR OR WATER DESIGN FLOW RATES. MANUALS. CONSTRUCTION DOCUMENTS SHALL REQUIRE THAT AN OPERATING MANUAL AND A MAINTENANCE MANUAL BE PROVIDED TO THE BUILDING OWNER OR THE DESIGNATED REPRESENTATIVE OF THE BUILDING OWNER WITHIN 90 DAYS AFTER THE DATE OF SYSTEM ACCEPTANCE. THESE MANUALS SHALL BE IN ACCORDANCE WITH INDUSTRY-ACCEPTED STANDARDS (SEE APPENDIX E) AND SHALL INCLUDE, AT A MINIMUM, THE FOLLOWING: (A) SUBMITTAL DATA STATING EQUIPMENT SIZE AND SELECTED OPTIONS FOR EACH PIECE OF EQUIPMENT REQUIRING MAINTENANCE. (B) OPERATION MANUALS AND MAINTENANCE MANUALS FOR EACH PIECE OF EQUIPMENT REQUIRING MAINTENANCE, EXCEPT EQUIPMENT NOT FURNISHED AS PART OF THE PROJECT. REQUIRED ROUTINE MAINTENANCE ACTIONS SHALL BE CLEARLY IDENTIFIED. (C) NAMES AND ADDRESSES OF AT LEAST ONE SERVICE AGENCY. (D) HVAC CONTROLS SYSTEM MAINTENANCE AND CALIBRATION INFORMATION, INCLUDING WIRING DIAGRAMS, SCHEMATICS, AND CONTROL SEQUENCE DESCRIPTIONS. DESIRED OR FIELD-DETERMINED SET-POINTS SHALL BE PERMANENTLY RECORDED ON CONTROL DRAWINGS AT CONTROL DEVICES OR, FOR DIGITAL CONTROL SYSTEMS, IN PROGRAMMING COMMENTS. (E) A COMPLETE NARRATIVE OF HOW EACH SYSTEM IS INTENDED TO OPERATE, INCLUDING SUGGESTED SET-POINTS. SECTION 6.7.2 - 2008 HOUSTON COMMERCIAL ENERGY CONSERVATION CODE.

1 HOOD-1- 4' FOR COOKING AREA (TYPE-1)
AIR EXHAUST = 4'-0"-x4'x100 =1600 CFM
AIR SUPPLY = 1600 x 80% =1280 CFM
AIR VELOCITY = 1300 FPM
EXH.DUCT SIZE = 20"X12"

1 HOOD-2 - 5' FOR COOKING AREA (TYPE-1)
AIR EXHAUST = 5'-0"-x4'x100 =2000 CFM
AIR SUPPLY = 2000 x 80% =1600 CFM
AIR VELOCITY = 1600 FPM
EXH.DUCT SIZE = 20"X12"



12/13/10



CONDENSATE DRAIN AT LAV.
NOT TO SCALE

PACKAGE UNIT EQUIPMENT SCHEDULE												
MARK	DESCRIPTION	SIZE	BTUH	FAN		ELECTRIC				O/S AIR	O/S DIA.	SEER
				CFM	H.P.	KW.	VOLTAGE	PH.	BREAKER			
*RTU-1	80TM014	8.0 TON	90,000	3,000	1	11.1	240/120V,60HZ	3	20 A	500 CFM	10"ø	10
*RTU-2	50TM012	5.0 TON	50,000	1,400	1/2	20	208/120V,60HZ	3	40 A	499 CFM	10"ø	10

ALL RTU UNITS WILL REQUIRE 7 DAY PROGRAMMABLE TEMPERATURE CONTROLS

TOILET EXHAUST FAN SCHEDULE							
MARK	DESCRIPTION	CFM	ELECTRIC			S.P.	SONES
			WATTS	VOLTAGE	PH.		
(2)EF	GREENHECK-SP-850	75	40	120V, 60HZ	1	0.125	1.9

- NOTES:
1. BACKFLOW DAMPERS
2. SPEED CONTROL
3. FAN TO RUN CONTINUOUSLY.
4. WALL CAP MOUNT AT LEAST 10' ABOVE GRADE, PAINT TO MATCH EXTERIOR

Rev.	By	Date

TRIMCOS DESIGN & ENG.
11222 RICHMOND AVE.
SUITE# 225 HOUSTON TX, 77082
(281) 558-9696
F-3926

SCHLOTZSKY'S VICTORY LAKES TOWN CENTER
TRACK 7A, NEC INTERSTATE HWY 45 & F.M.646
LEAGUE CITY TEXAS 77000

ARCH
Woo Associates, LLC.
ARCHITECTS - PLANNERS
13734 Branford Green Dr.
Houston, TX 77083
(832) 228-8128

Date	07-14-2010
Scale	AS SHOWN
Drawn by	
Job#:	
SHEET NO:	M-02

HOOD INFORMATION

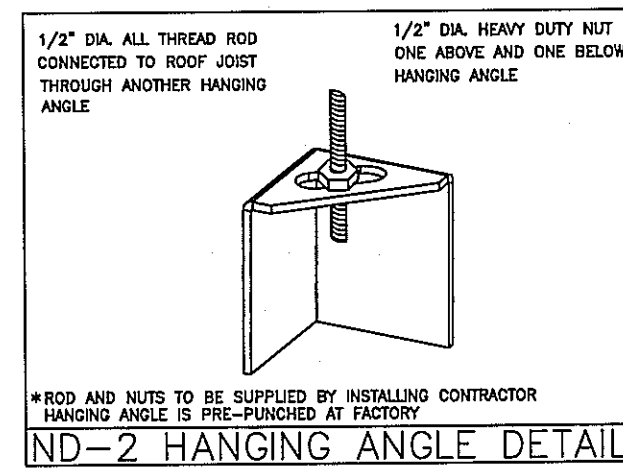
HOOD NO.	TAG	MODEL	LENGTH	MAX. COOKING TEMP.	EXHAUST PLENUM RISER(S)					SUPPLY PLENUM RISER(S)					HOOD CONSTRUCTION	HOOD CONFIG.		SWITCHES	
					TOTAL EXH. CFM	WIDTH	LENG.	DIA.	CFM	S.P.	TOTAL SUP. CFM	WIDTH	LENG.	DIA.		CFM	S.P.	END TO END	ROW
1	SANDWICH/PIZZA	6024 VHB-PSP-F-ND	5' 11.00"	700 Deg.	1183	14"	14"	1183	-0.124"	946					430 SS 100%	ALONE	ALONE	1 FAN 1 LIGHT	FRONT RIGHT FACE
2	OVEN	6024 VHB-ND	4' 1.00"	700 Deg.	715	11"	11"	715	-0.088"	0					430 SS 100%	ALONE	ALONE	1 FAN	FRONT RIGHT FACE

HOOD INFORMATION

HOOD NO.	FILTER(S)				LIGHT(S)			UTILITY CABINET(S)				FIRE SYSTEM PIPING	HOOD HANGING WGT	
	TYPE	QTY.	HEIGHT	LENGTH	QTY.	TYPE	WIRE GUARD	LOCATION	FIRE SYSTEM TYPE	SIZE	ELECTRICAL MODEL #			SWITCHES QUANTITY
1					0								NO	275 LBS
2					0								NO	197 LBS

PERFORATED SUPPLY PLENUM(S)

HOOD NO.	POS.	LENGTH	WIDTH	HEIGHT	RISER(S)				
					WIDTH	LENG.	DIA.	CFM	S.P.
1	Front	71"	12"	6"	10"	24"		944	0.138"

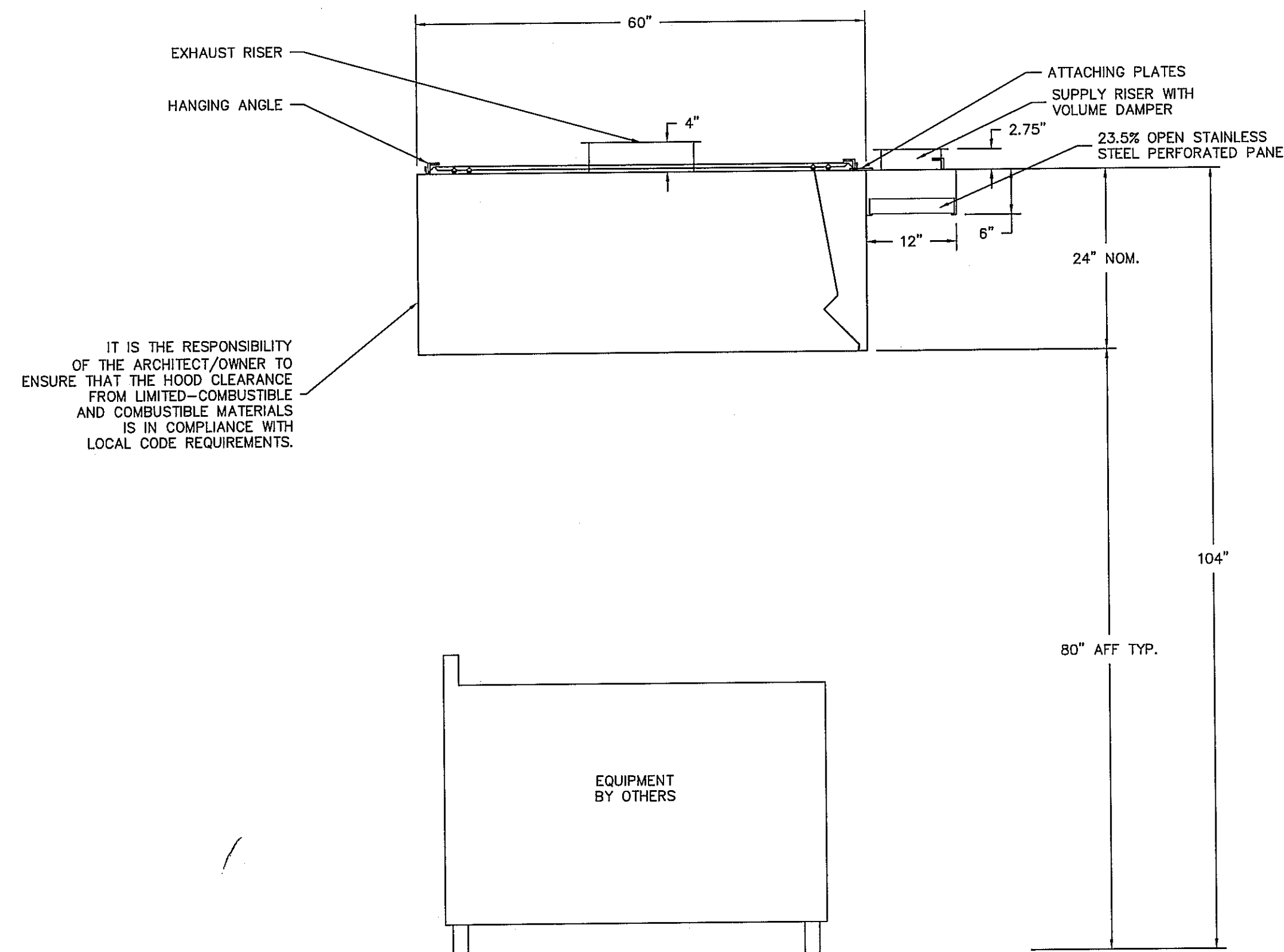


CAPTIVE-AIRE HOODS ARE BUILT IN COMPLIANCE WITH

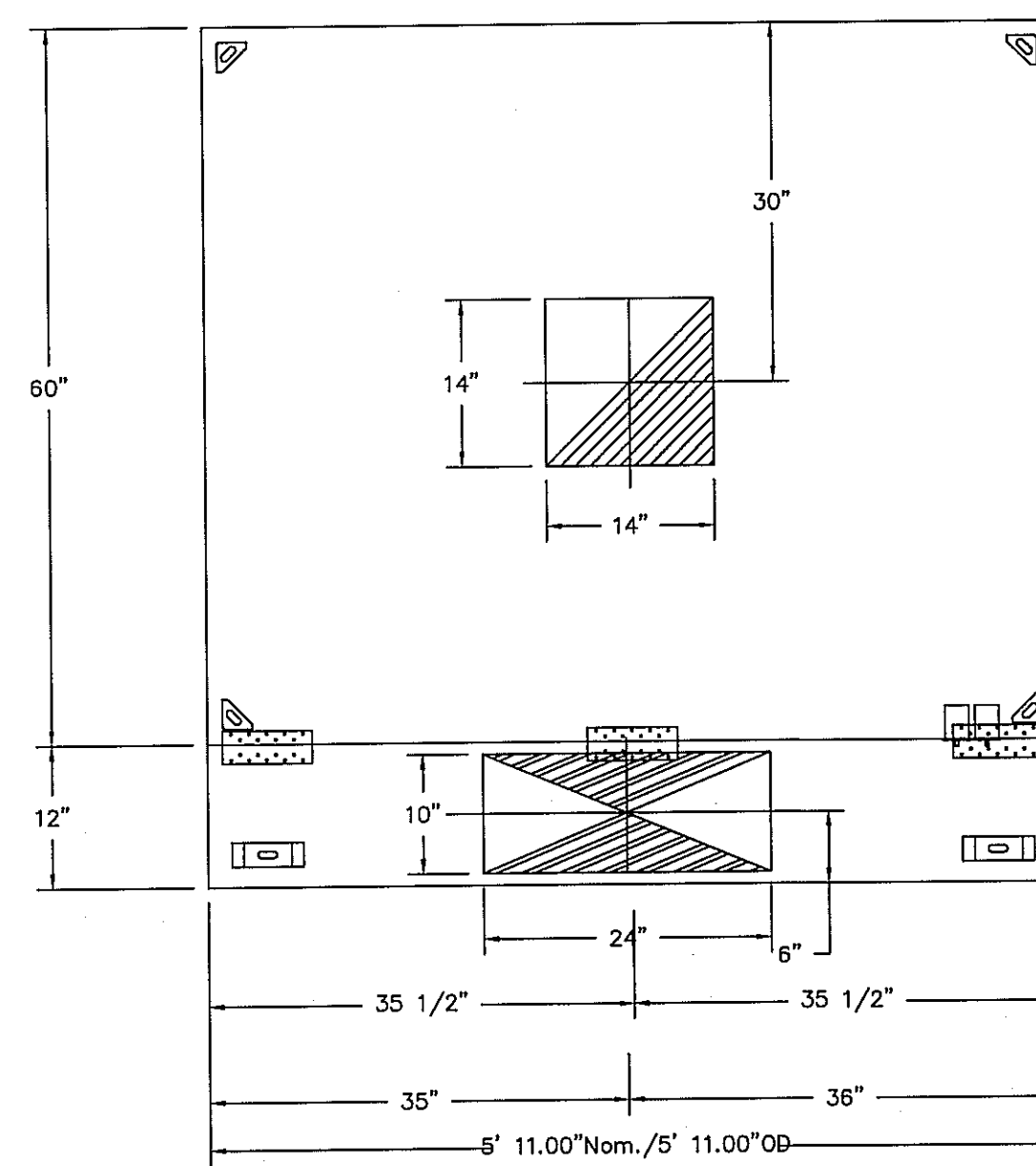
NFPA #96
NSF
UL 710 & ULC710 STANDARDS
E.T.L. LISTED 3054804-001

ETL LISTING DESCRIPTION BLOCK

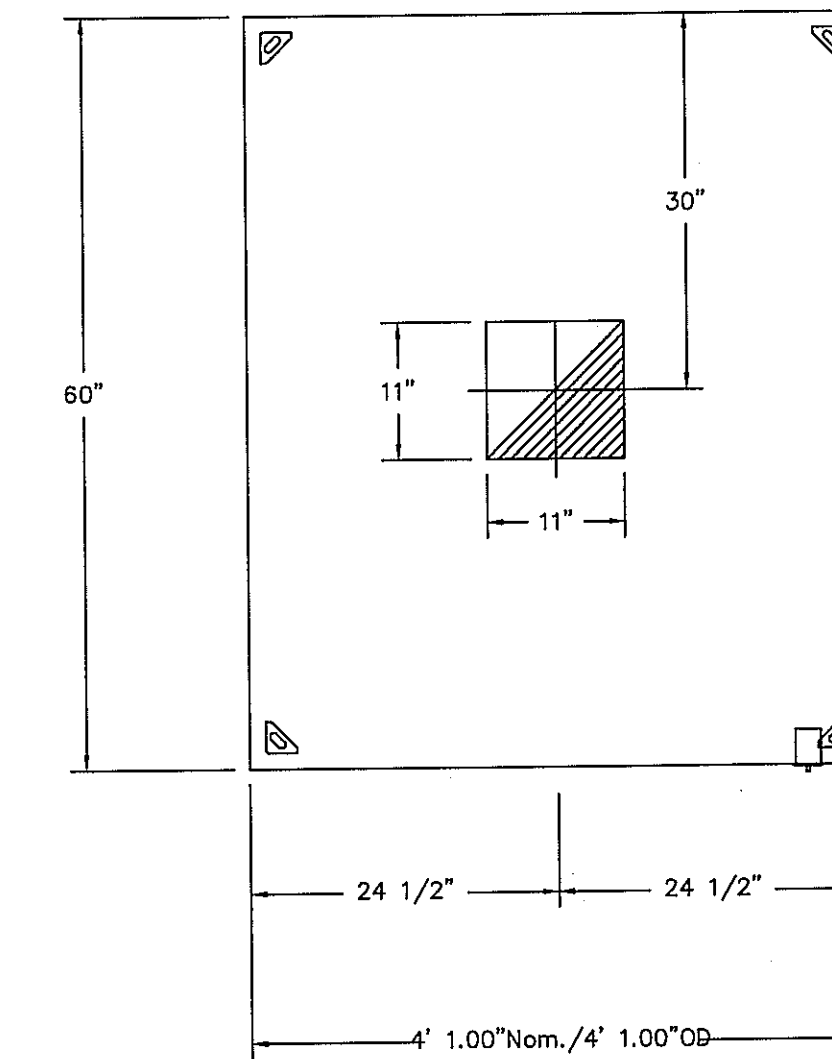
THE CAPTIVE AIRE MODEL VH HAS BEEN E.T.L. TESTED, LISTED, AND APPROVED TO EXHAUST A MINIMUM OF 100 CFM PER LINEAR FOOT OVER 700 DEGREE EQUIPMENT



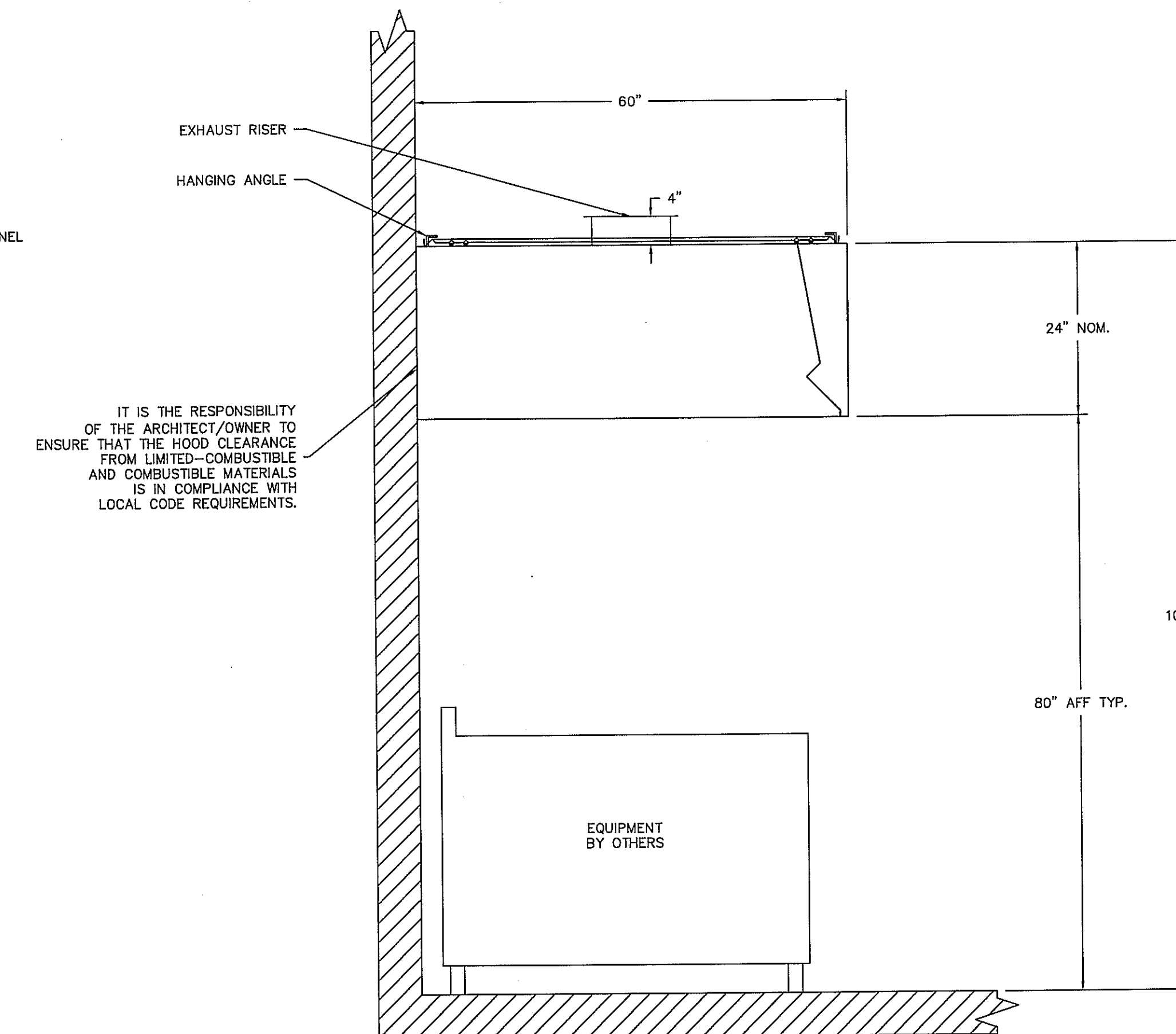
SECTION VIEW - MODEL 6024VHB-PSP-F-ND HOOD - #1 (SANDWICH/PIZZA)



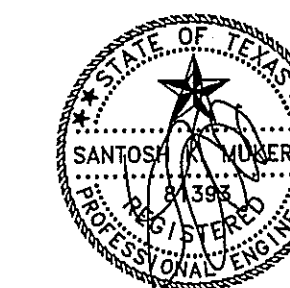
PLAN VIEW - Hood #1 (SANDWICH/PIZZA) 5' 11.00" LONG 6024VHB-PSP-F-ND



PLAN VIEW - Hood #2 (OVEN) 4' 1.00" LONG 6024VHB-ND



SECTION VIEW - MODEL 6024VHB-ND HOOD - #2 (OVEN)



12/13/10

Rev. By Date

TRIMCOS DESIGN & ENG.
11222 RICHMOND AVE.
SUITE# 225 HOUSTON TX, 77082
(281) 558-9696
F-3926

SCHLOTZSKY'S VICTORY LAKES TOWN CENTER
TRACK 7A, NEC INTERSTATE HWY 45 & F.M.646
LEAGUE CITY TEXAS 77000

ARCH
Woo Associates, LLC.
ARCHITECTS - PLANNERS
13734 Branford Green Dr
Houston, TX. 77083
(832) 228-8128

Date 07-14-2010
Scale AS SHOWN
Drawn by
Job#:
SHEET NO:

M-03

EXHAUST FAN INFORMATION

FAN UNIT NO.	FAN UNIT MODEL #	MODEL	TAG	CFM	S.P.	RPM	H.P.	Ø	VOLT	FLA	WEIGHT (LBS.)
1	DU75HFA	DU75HFA		1183	0.750	1022	0.750	1	115	13.0	75.73
3	DU30HFA	DU30HFA		715	0.500	1314	0.250	1	115	4.0	52.56

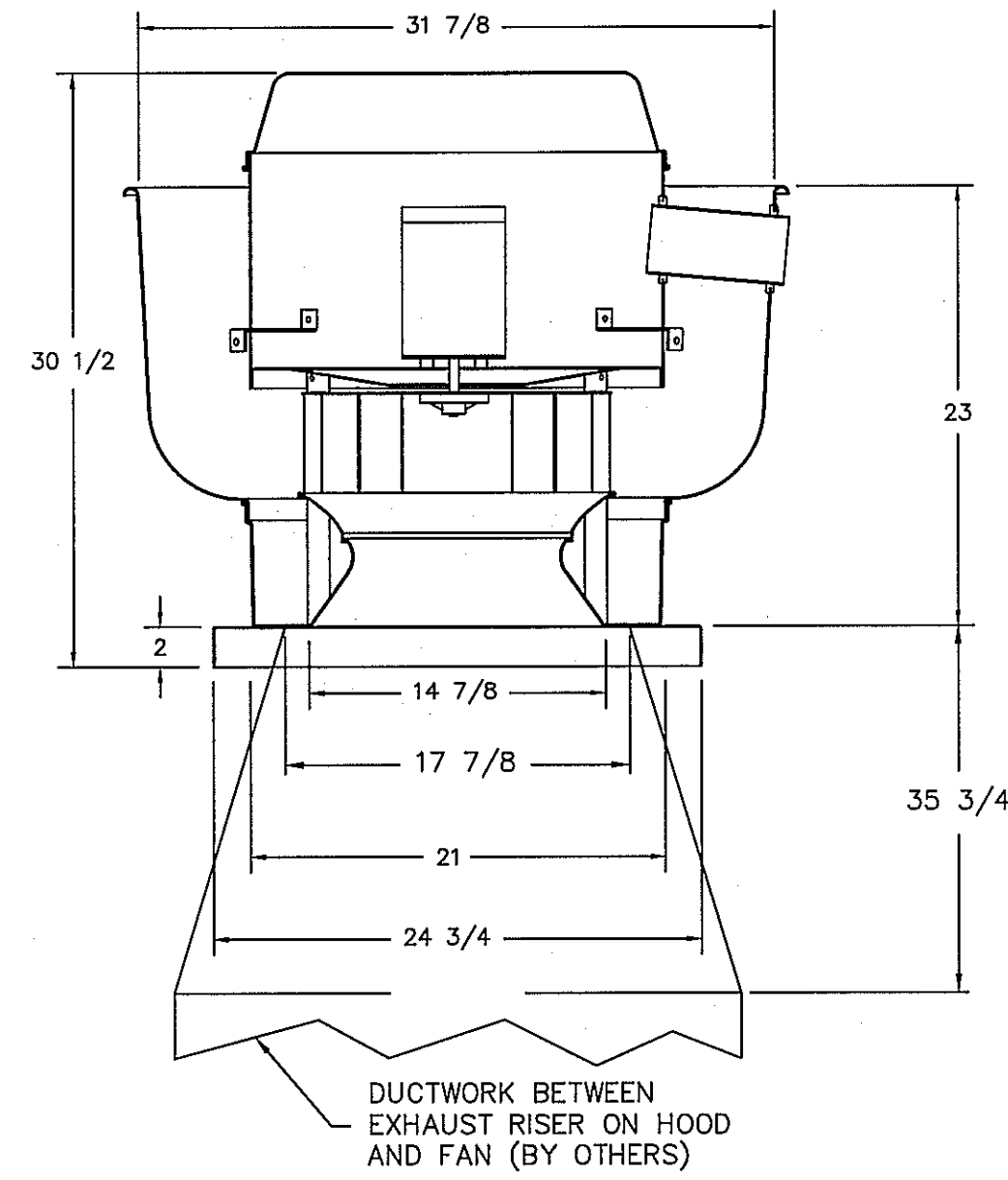
HEATER/MUA FAN INFORMATION

FAN UNIT NO.	FAN UNIT MODEL #	BLOWER	HOUSING	TAG	CFM	S.P.	RPM	H.P.	Ø	VOLT	FLA	WEIGHT (LBS.)
2	NSAU1-G10	G10	NSAU.1		946	0.500	702	0.333	1	115	7.0	184.00

CURB ASSEMBLIES

NO.	ON FAN	ITEM	SIZE
1	# 1	Curb	23.000"W x 23.000"L x 14.000"H
2	# 2	Curb	23.000"W x 23.000"L x 14.000"H
3	# 3	Curb	19.500"W x 19.500"L x 14.000"H

FAN #1 DU75HFA - EXHAUST FAN

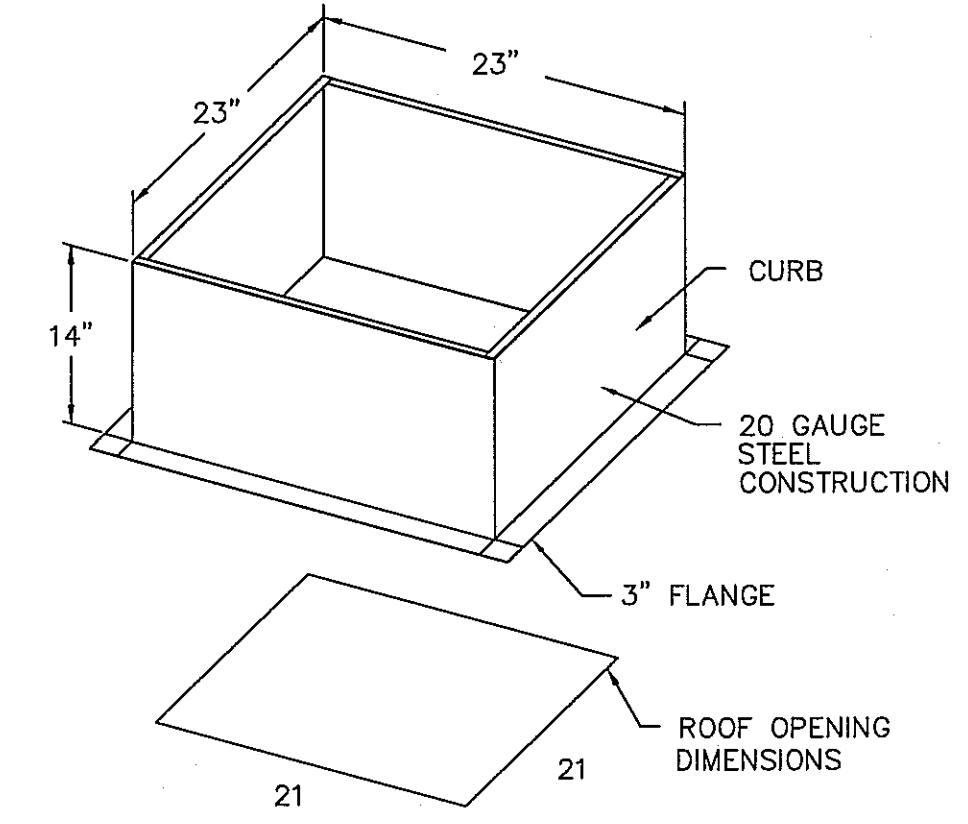


FEATURES:

- ROOF MOUNTED FANS
- RESTAURANT MODEL
- UL705 AND UL762
- VARIABLE SPEED CONTROL
- INTERNAL WIRING
- WEATHERPROOF DISCONNECT
- THERMAL OVERLOAD PROTECTION (SINGLE PHASE)
- HIGH HEAT OPERATION 300°F (149°C)
- GREASE CLASSIFICATION TESTING

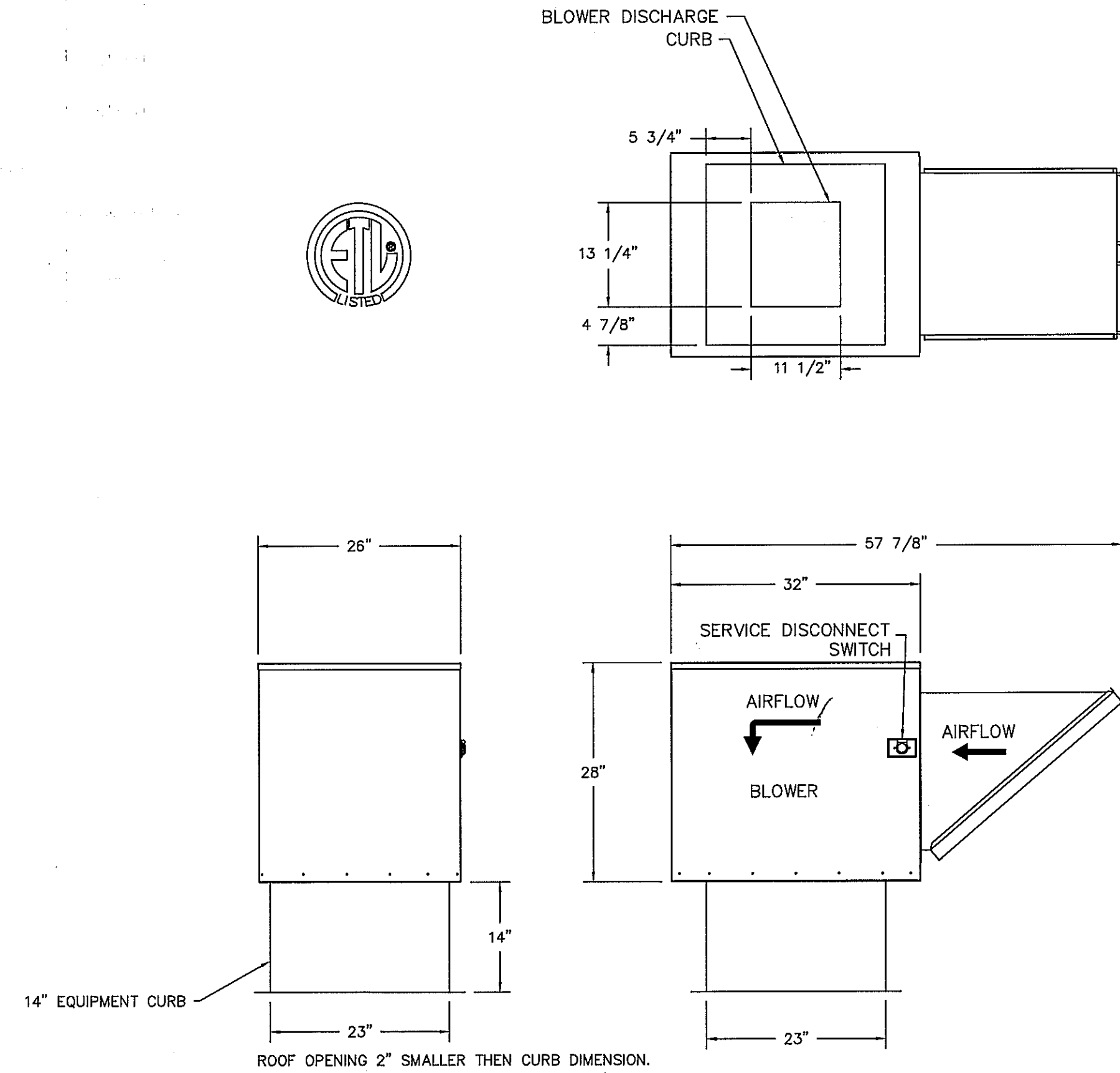
NORMAL TEMPERATURE TEST
EXHAUST FAN MUST OPERATE CONTINUOUSLY WHILE EXHAUSTING AIR AT 300°F (149°C) UNTIL ALL FAN PARTS HAVE REACHED THERMAL EQUILIBRIUM, AND WITHOUT ANY DETERIORATING EFFECTS TO THE FAN WHICH WOULD CAUSE UNSAFE OPERATION.

ABNORMAL FLARE-UP TEST
EXHAUST FAN MUST OPERATE CONTINUOUSLY WHILE EXHAUSTING BURNING GREASE VAPORS AT 600°F (316°C) FOR A PERIOD OF 15 MINUTES WITHOUT THE FAN BECOMING DAMAGED TO ANY EXTENT THAT COULD CAUSE AN UNSAFE CONDITION.

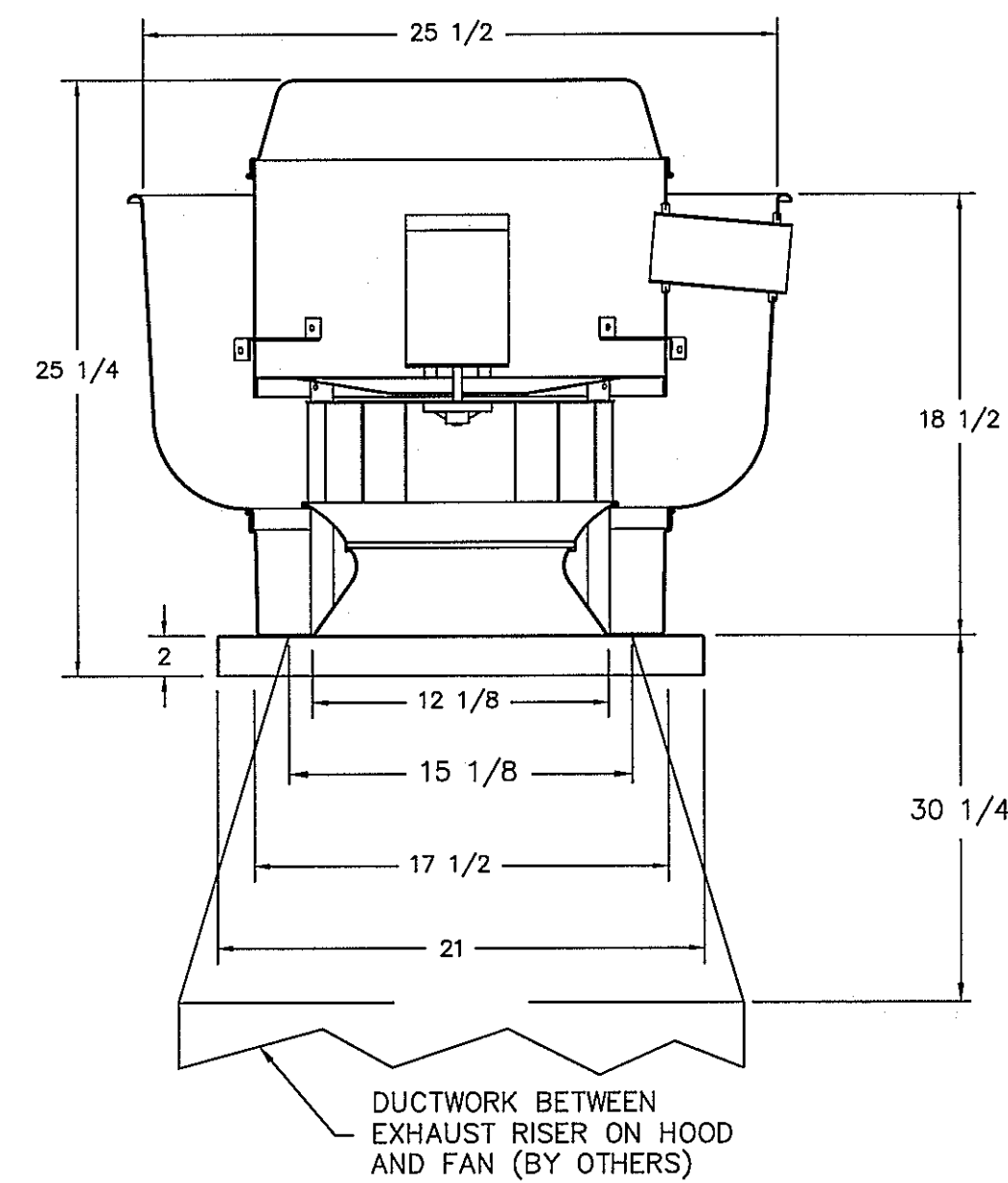


*THE INTAKE OF SUPPLY FAN HAS TO BE 10 FEET AWAY FROM EITHER EXHAUST FAN.

FAN #2 NSAU1-G10 - SUPPLY FAN
1. SUPPLY UNIT WITH 10" BLOWER IN SIZE #1 HOUSING
2. INTAKE HOOD WITH EZ FOAM FILTER
3. DOWN DISCHARGE - AIR FLOW RIGHT -> LEFT



FAN #3 DU30HFA - EXHAUST FAN

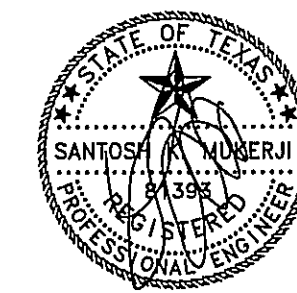
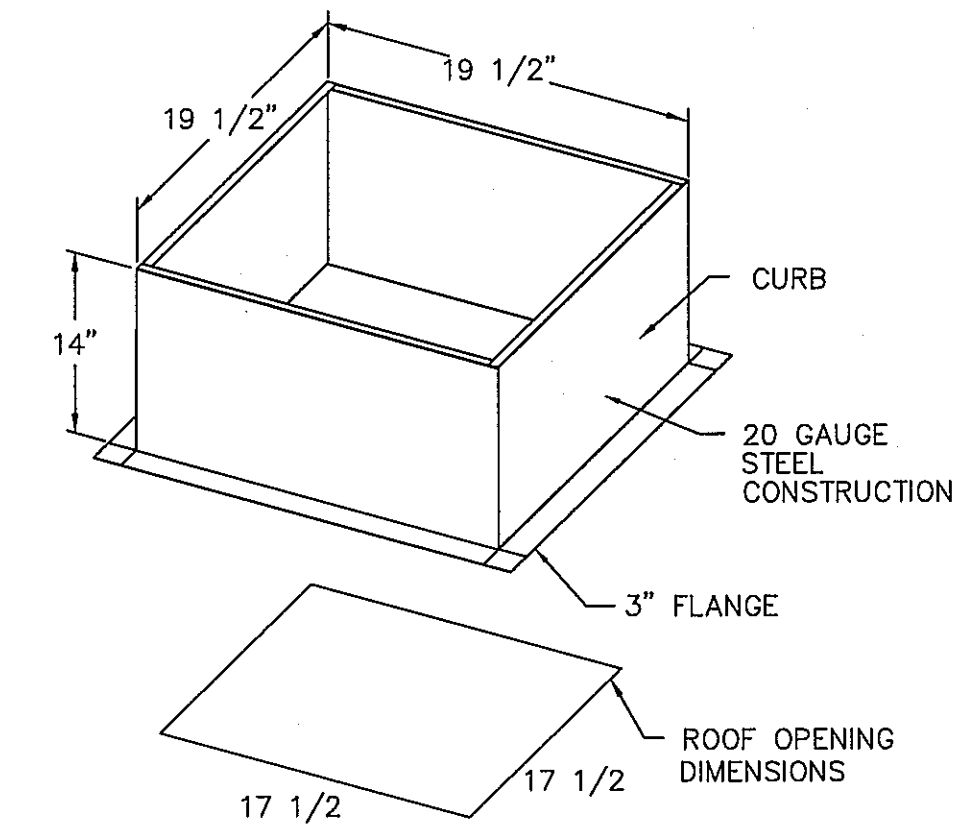


FEATURES:

- ROOF MOUNTED FANS
- RESTAURANT MODEL
- UL705 AND UL762
- VARIABLE SPEED CONTROL
- INTERNAL WIRING
- WEATHERPROOF DISCONNECT
- THERMAL OVERLOAD PROTECTION (SINGLE PHASE)
- HIGH HEAT OPERATION 300°F (149°C)
- GREASE CLASSIFICATION TESTING

NORMAL TEMPERATURE TEST
EXHAUST FAN MUST OPERATE CONTINUOUSLY WHILE EXHAUSTING AIR AT 300°F (149°C) UNTIL ALL FAN PARTS HAVE REACHED THERMAL EQUILIBRIUM, AND WITHOUT ANY DETERIORATING EFFECTS TO THE FAN WHICH WOULD CAUSE UNSAFE OPERATION.

ABNORMAL FLARE-UP TEST
EXHAUST FAN MUST OPERATE CONTINUOUSLY WHILE EXHAUSTING BURNING GREASE VAPORS AT 600°F (316°C) FOR A PERIOD OF 15 MINUTES WITHOUT THE FAN BECOMING DAMAGED TO ANY EXTENT THAT COULD CAUSE AN UNSAFE CONDITION.



12/13/10

Rev.	By	Date

TRIMCOS DESIGN & ENG.
11222 RICHMOND AVE.
SUITE# 225 HOUSTON TX, 77062
(281) 558-9696
F-3926

SCHLOTZSKY'S VICTORY LAKES TOWN CENTER
TRACK 7A, NEC INTERSTATE HWY 45 & F.M.646
LEAGUE CITY TEXAS 77000

ARCH
Woo Associates, LLC.
ARCHITECTS - PLANNERS
13734 Branford Green Dr.
Houston, TX. 77083
(832) 228-8128

Date	07-14-2010
Scale	AS SHOWN
Drawn by	
Job#:	
SHEET NO:	

M-04