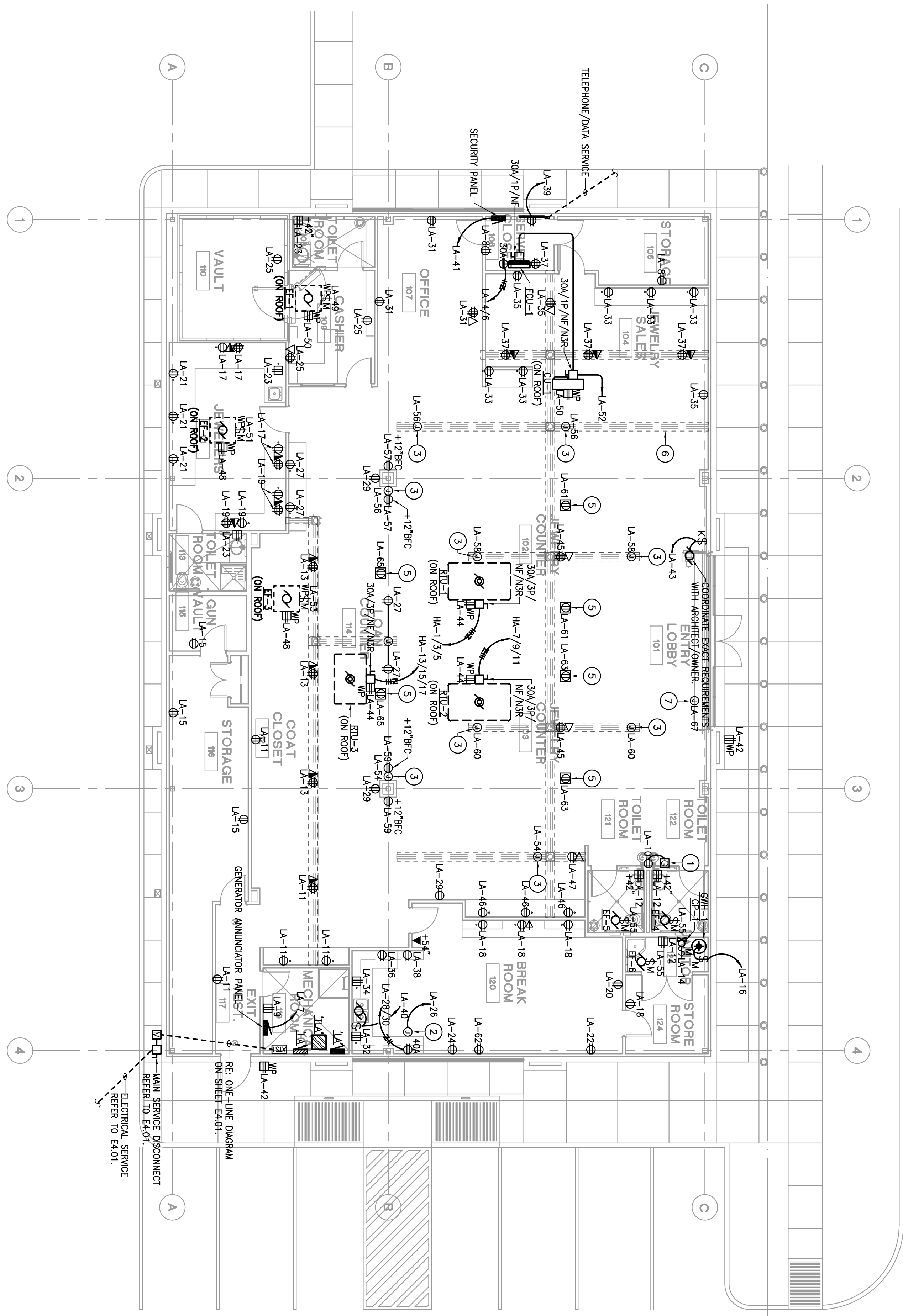


1. LARGEST FIRE ALARM BELLING SUPERINTENDING CERTIFIED MINIMUM LISTED THROUGH THE NATIONAL INSTITUTE FOR CERTIFICATION IN ENGINEERING TECHNOLOGIES (NICT), SHALL PROVIDE PLANS AND CALCULATIONS FOR A MANUAL AND AUTOMATIC FIRE DETECTION BUILDING SPACE LAYOUT. BUILDING OCCUPANCY, NFPA 72, LOCAL AND STATE CODE REQUIREMENTS, AND THE FIRE ALARM AND DETECTION SYSTEM SPECIFICATIONS.

- ELECTRICAL KEY NOTES:**
1. PROVIDE FLUSH MOUNTED GPO DEVICE ADJACENT TO DRINKING FOUNTAIN. LOCATE RECEPTACLE WITH-IN COMPARTMENT OF DRINKING FOUNTAIN CABINET.
  2. PROVIDE JUNCTION BOX ABOVE ACCESSIBLE CEILING FOR CONNECTION OF RANGE HOOD. MAKE FINAL CONNECTION TO JUNCTION BOX TO BE MADE BY ELECTRICAL CONTRACTOR.
  3. PROVIDE JUNCTION BOX FOR CONNECTION OF CASE LIGHTING. MAKE FINAL CONNECTION TO DESIGN CASE. (TYPICAL)
  4. FURNISHED BY OWNER. INSTALLED BY ELECTRICAL CONTRACTOR.
  5. DEVICE FLUSH MOUNTED IN CEILING. COORDINATE EXACT LOCATION WITH ARCHITECT PRIOR TO ROUGH-IN.
  6. PROVIDE WALKERPROOF AS REQUIRED FOR POWER/DATA. COORDINATE LOCATION AND LENGTHS WITH ARCHITECT. (TYPICAL)
  7. PROVIDE JUNCTION BOX FOR CONNECTION BUILDING SIGNAL. COORDINATE EXACT LOCATION WITH ARCHITECT/OWNER.

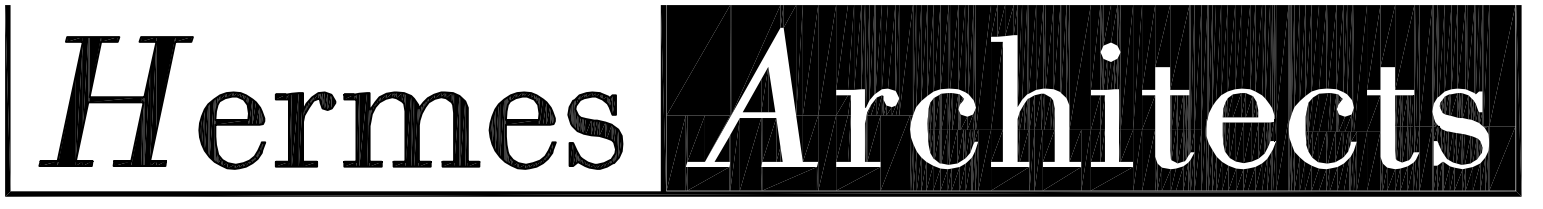


**ELECTRICAL POWER FLOOR PLAN**  
SCALE: 1/8" = 1'-0"

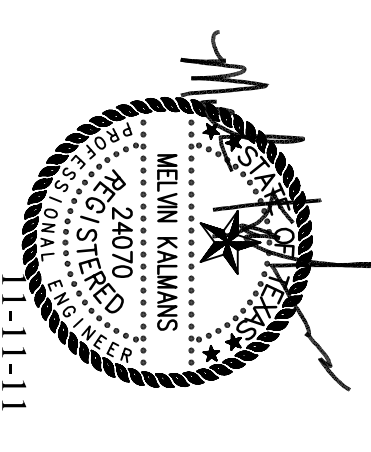
DATE	08.31.2011
PROJECT NO.	1102100
DRAWN BY	DES
CHECKED BY	MR
Shaw's Jewelers 1014 West Gray Street Houston, Texas 77019	

**ELECTRICAL POWER FLOOR PLAN**

**E3.01**



Members A.I.A.  
1177 West Loop South, Ste. 500  
Houston, Texas 77027  
Tel. 713-785-3644  
www.hermesarchitects.com  
Houston • Dallas • Ft. Worth



This document is an instrument of service protected by the copyright law of the United States of America, 17 U.S.C. § 102, and shall not be copied or reproduced without the express written consent of Hermes Architects, Inc.

