

ELECTRICAL KEYED NOTES:

- 1 EXHAUST OUTLET FOR STANDBY GENERATOR MUST BE AT LEAST 10 FEET FROM ADJOINING PROPERTY LINES. VERIFY AND DIMENSION EXACT LOCATION OF PROPERTY LINES BEFORE SETTING STANDBY GENERATOR.

PARKING LOT LIGHT FIXTURE SCHEDULE

TYPE	MANUFACTURER	NUMBER OF PER POLE	LAMPS NO. TYPE	POLE MODEL NO./REMARKS
0A	LITHONIA# ASZ-250M-SR3-480-SQW-RFA DBL-AZ68	2	1 35W/PSM E29	480 125' POLE WITH BLACK POWDER COAT OVER GALVANIZING. COORDINATE ALL FINISHES WITH ARCHITECT.

APPROVED LIGHTING MANUFACTURERS:

LSI, KIM, DL, GARDO, LITHONIA, WIDELTE, STONCO

ROUND POLE MOUNT FIXTURES:

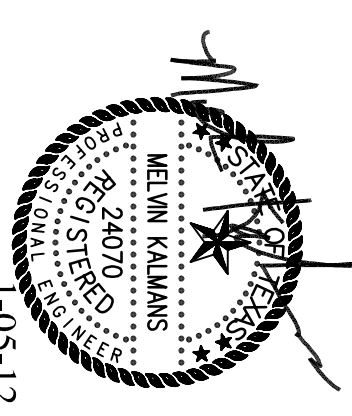
NOTES:

THE ABOVE LIGHTING MANUFACTURERS SUBSTITUTION LIST DOES NOT GUARANTEE APPROVAL. APPROVAL WILL BE DETERMINED AFTER REVIEW OF SHOP DRAWING TO DETERMINE IF THE FIXTURE OR POLE SUBSTITUTED MEETS OR EXCEEDS THE DESIGN STANDARDS AND SCHEDULE. THE CONTRACTOR SHALL BE THE RESPONSIBILITY OF THE CONTRACTOR TO CAREFULLY SELECT SUBSTITUTIONS FOR THE SPECIFIED LIGHT FIXTURES FROM THE APPROVED LIGHTING MANUFACTURERS LISTED ABOVE. WHERE SPECIFIC OPTIONS/ACCESSORIES ARE SPECIFIED, THEY SHALL BE PROVIDED AS SPECIFIED WITH THE SUBSTITUTION. DUE TO THE WIDE RANGE OF FINISH QUALITIES OFFERED BY EACH MANUFACTURER, THE APPROVED LIGHTING MANUFACTURERS SUBSTITUTION LIST IS NOT INTENDED TO INDICATE THAT ANY OR ALL MANUFACTURERS LISTED WILL HAVE SUITABLE SUBSTITUTIONS FOR THE LIGHT FIXTURES OR POLES SPECIFIED IN THE LIGHT FIXTURE SCHEDULE. SHOP DRAWING OF THE DETAILS AS A RESULT OF INAPPROPRIATE SUBSTITUTIONS SHALL BE THE RESPONSIBILITY OF THE CONTRACTOR.

CITY COMMENTS 12.02.2011
CITY COMMENTS 01.05.2012

Hermes Architects

Members A.I.A.
1177 West Loop South, Ste. 500
Houston, Texas 77027
Tel. 713-785-3644
www.hermesarchitects.com
Houston • Dallas/Ft. Worth



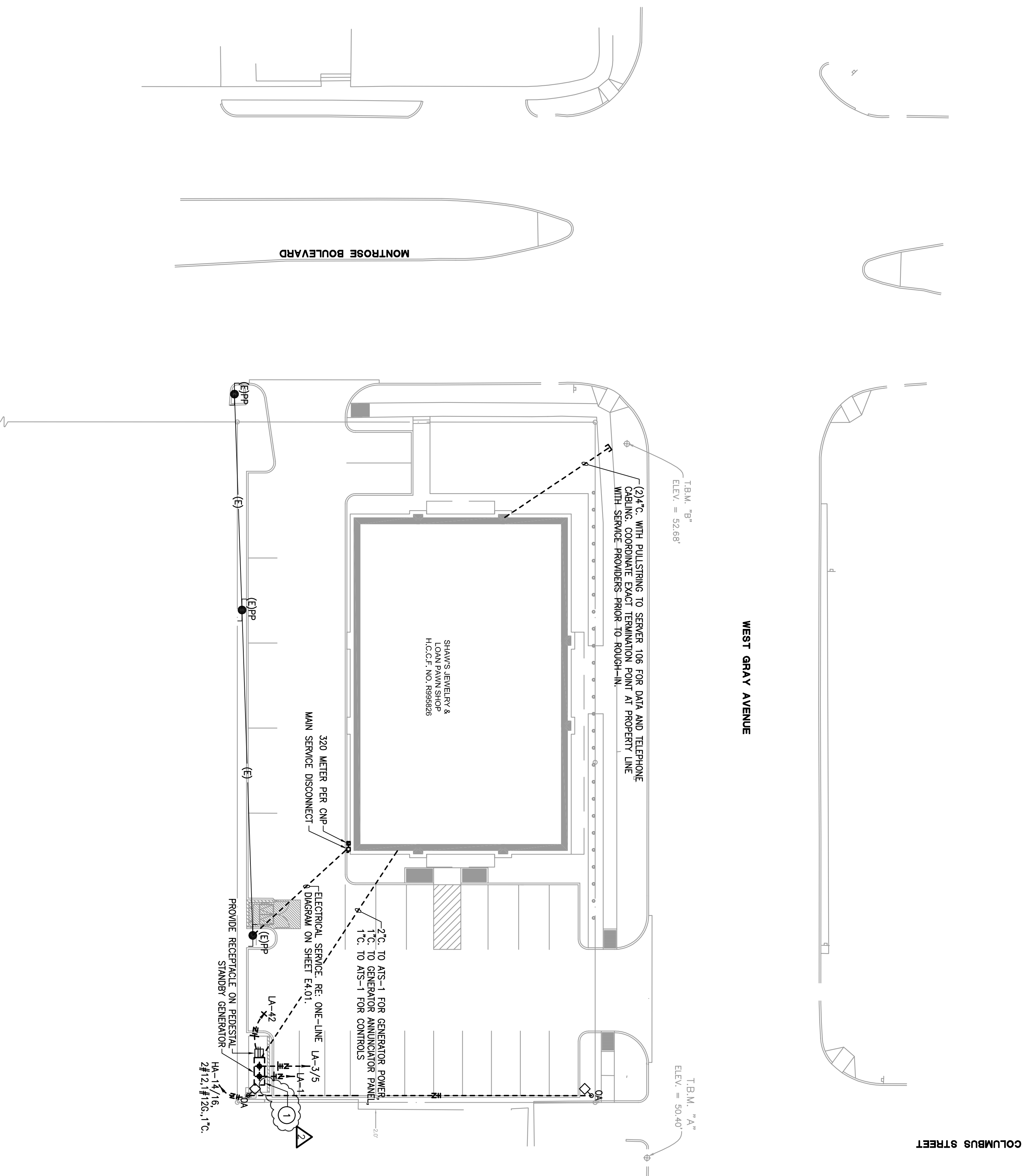
This document is an instrument of service protected by the copyright law of the United States of America, 17 U.S.C. § 102, and shall not be copied or reproduced without the express written consent of Hermes Architects, Inc.

Shaw's Jewelers
West Gray
1021 West Gray Ave.
Houston, Texas

Shaw's Jewelers
1014 West Gray Street
Houston, Texas 77019

DATE 08.31.2011
PROJECT NO. 1102100
DRAWN BY DES
CHECKED BY MR

ELECTRICAL SITE PLAN



ELECTRICAL SITE PLAN
SCALE: 1" = 20'-0"

