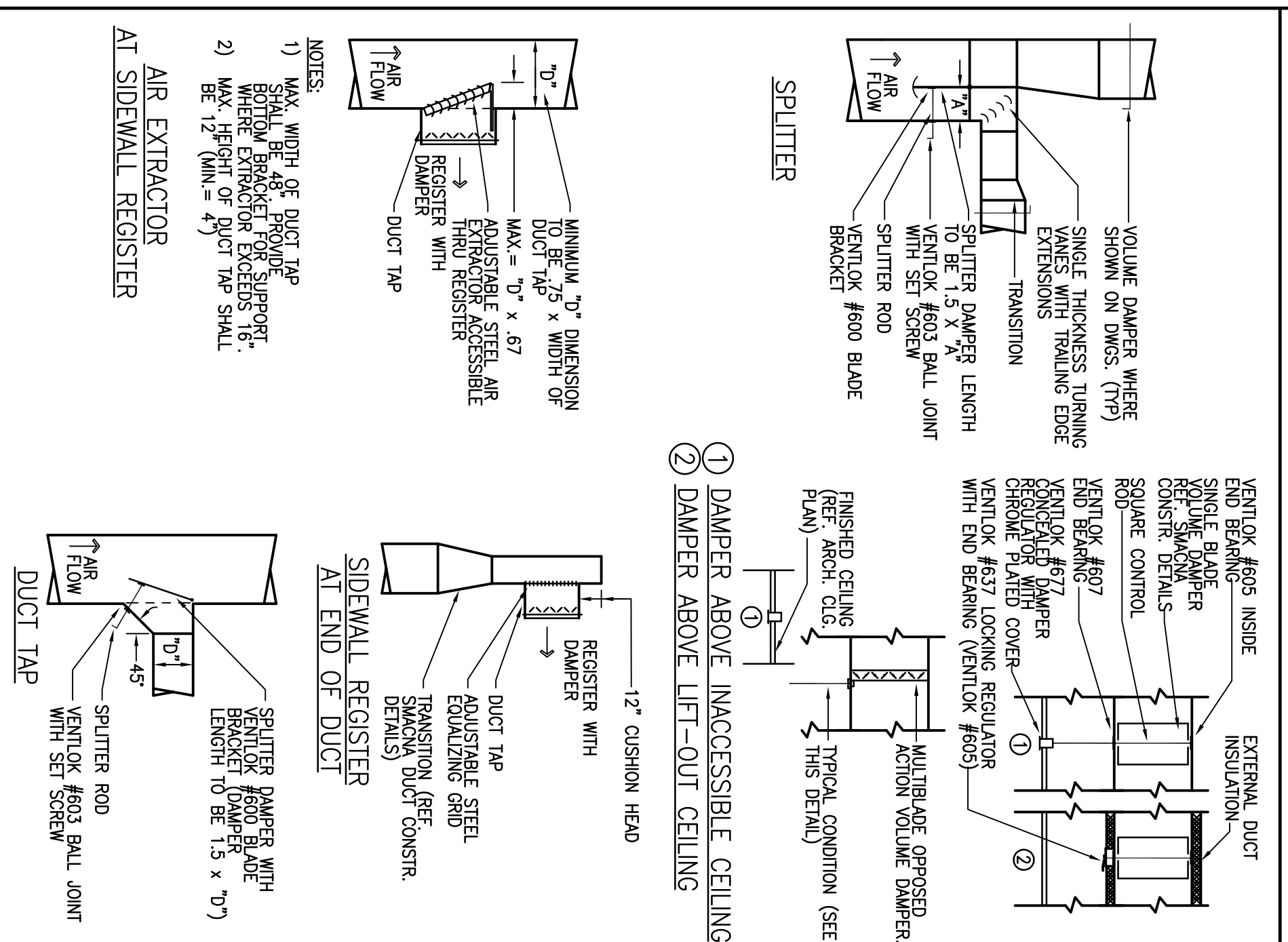
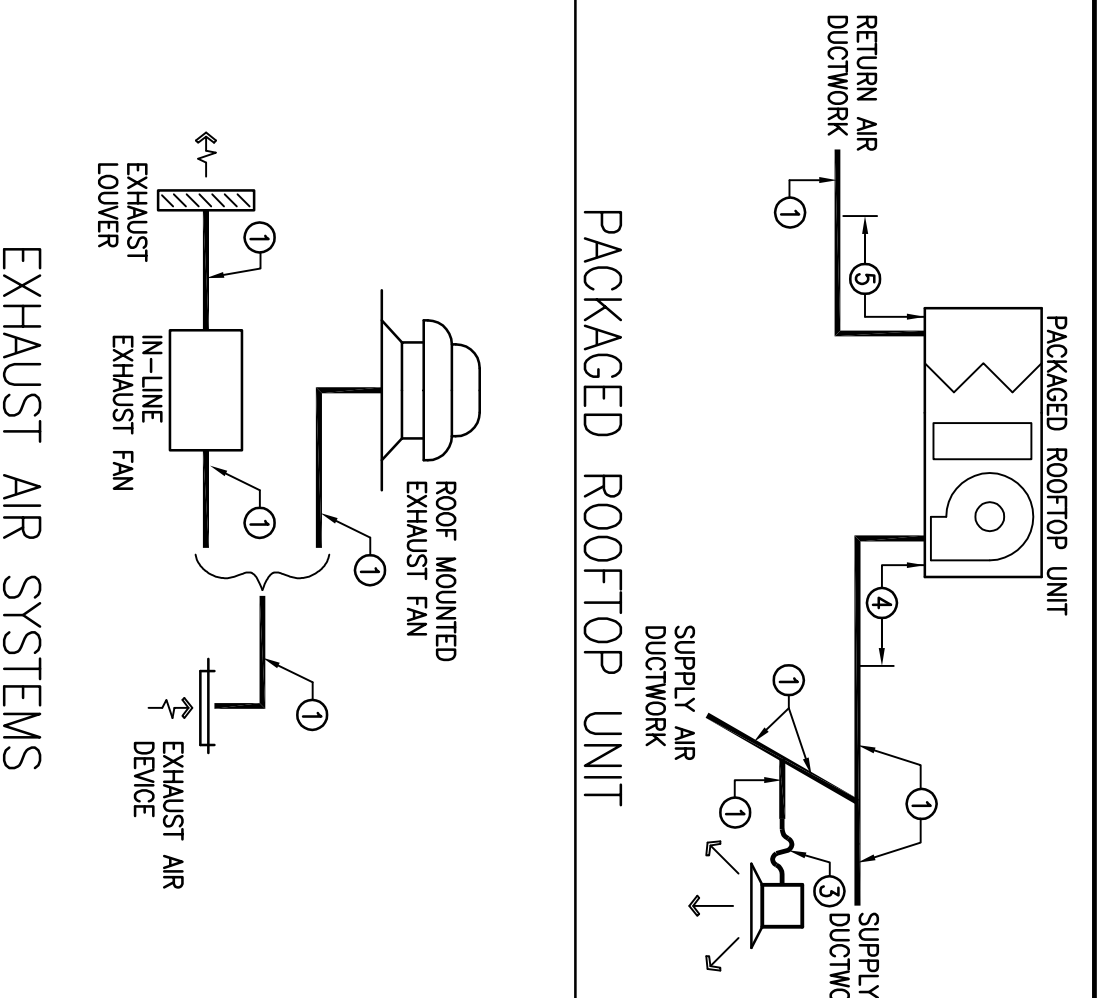


DUCTWORK CONSTRUCTION DETAILS



DUCT LINER AND INSULATION

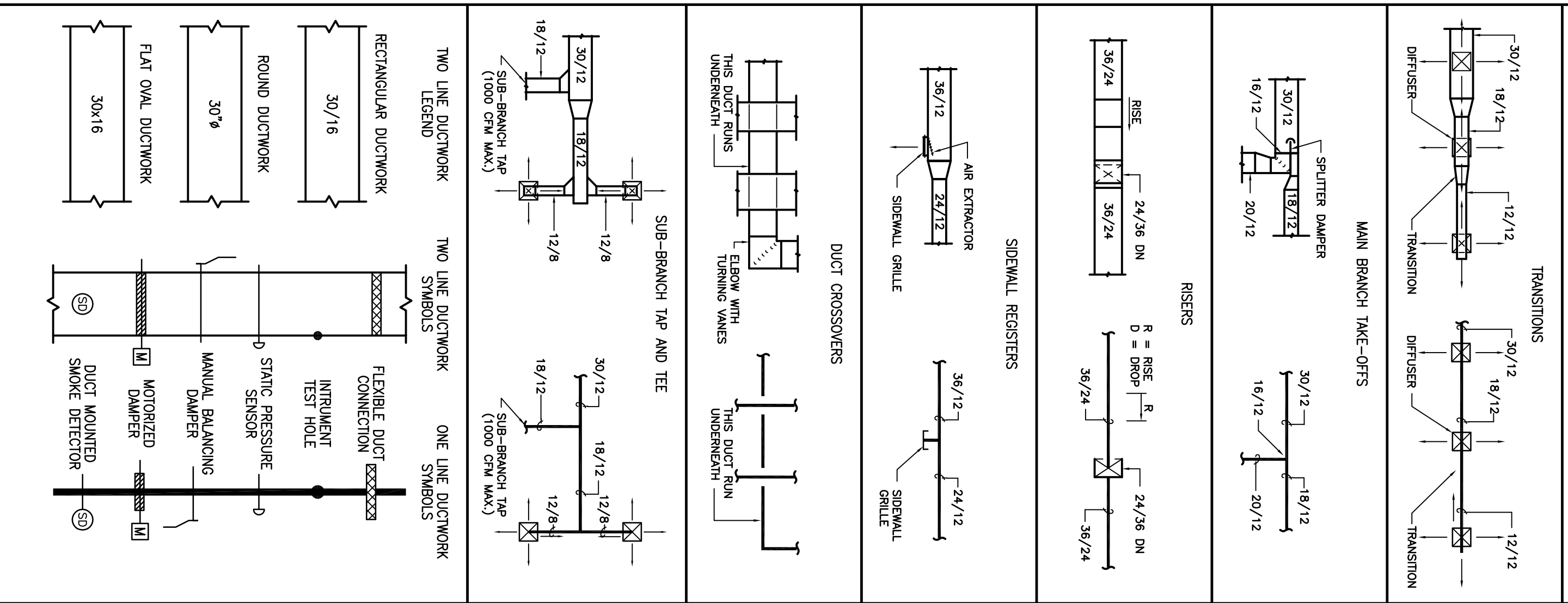


GRILLE SIZING SCHEDULE

| DESIGNATES GRILLE TYPE (REFERENCE GRILLE SCHEDULE) | DESIGNATES GRILLE NECK SIZE (REFERENCE TABLE BELOW) |
|--|---|
| | |
| DESIGNATES GRILLE TYPE (REFERENCE GRILLE SCHEDULE) | DESIGNATES GRILLE NECK SIZE (REFERENCE TABLE BELOW) |
| | |
| | |
| | |
| | |
| | |
| | |

ALL GRILLES SHOWN SHALL BE FOUR-WAY THROW UNLESS OTHERWISE SHOWN.

DUCTWORK SYMBOLS LEGEND

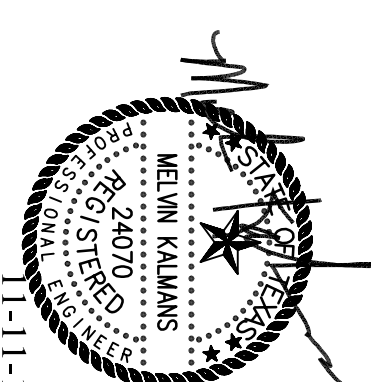


SYMBOL LEGEND

| SYMBOL | DESCRIPTION (DISREGARD ITEMS NOT SHOWN ON PLANS) |
|------------------------------|---|
| GENERAL | |
| ① | KEY NOTE TAG |
| ② | NOTE SPECIFIC TO DETAIL TAG |
| ③ | REVISION TAG |
| ④ | NEW EQUIPMENT |
| DUCTWORK | |
| ⊕ | SUPPLY AIR DUCTWORK |
| ⊖ | RETURN AIR AND OUTSIDE AIR DUCTWORK |
| ⊗ | FLEXIBLE DUCTWORK |
| ⊘ | SUPPLY AIR DUCTWORK THROUGH HORIZONTAL PARTITION |
| ⊙ | RETURN AIR AND OUTSIDE AIR DUCTWORK THROUGH HORIZONTAL PARTITION |
| ⊚ | FIRE DAMPER (VERTICAL) |
| ⊛ | FIRE DAMPER (HORIZONTAL) |
| ⊜ | SMOKE DAMPER (VERTICAL) |
| ⊝ | SMOKE DAMPER (HORIZONTAL) |
| ⊞ | COMBINATION FIRE & SMOKE DAMPER (VERTICAL) |
| ⊟ | COMBINATION FIRE & SMOKE DAMPER (HORIZONTAL) |
| ⊠ | MANUAL BALANCING DAMPER (SEE DAMPER SCHEDULE) |
| ⊡ | MOTORIZED DAMPER (SEE DAMPER SCHEDULE) |
| SENSORS | |
| ① | THERMOSTAT |
| ② | TEMPERATURE SENSOR |
| ③ | HUMIDISTAT |
| ④ | SMOKE DETECTOR |
| AIR DEVICES | |
| ⊕ | GRILLE SIZE TAG (REFER TO GRILLE SIZE LEGEND) |
| ⊖ | SUPPLY AIR GRILLE WITH FOUR-WAY THROW |
| ⊗ | SUPPLY AIR GRILLE WITH THREE-WAY THROW |
| ⊘ | SUPPLY AIR GRILLE WITH TWO-WAY THROW |
| ⊙ | SUPPLY AIR GRILLE WITH TWO-WAY CORNER THROW |
| ⊚ | SUPPLY AIR GRILLE WITH ONE-WAY THROW |
| ⊛ | RETURN AIR GRILLE |
| ⊜ | RETURN AIR GRILLE WITH SOUND BOOT |
| ⊝ | EXHAUST AIR GRILLE |
| ⊞ | SUPPLY AIR SIDEWALL GRILLE |
| ⊟ | RETURN AIR SIDEWALL GRILLE |
| ⊠ | RETURN AIR OPENING ABOVE CEILING |
| PIPING | |
| —0— | CONDENSATE DRAIN LINE |
| —A— | AUXILIARY CONDENSATE DRAIN LINE |
| —R— | REFRIGERANT LIQUID & GAS REGRULATION LINE (TOTAL OF TWO PIPES, ONLY ONE PIPE SHOWN FOR DRAWING CLARITY) |
| —RL— | REFRIGERANT LIQUID LINE |
| —RG— | REFRIGERANT HOT GAS LINE |
| —RS— | REFRIGERANT SUCTION LINE |
| —E— | ELBOW UP |
| —D— | ELBOW DOWN |
| —T— | 90° ELBOW |
| —45°— | 45° ELBOW |
| —TE— | TE |
| —TE UP— | TE UP |
| —TE DOWN— | TE DOWN |
| —O— | TOP BRANCH CONNECTION |
| —B— | BOTTOM BRANCH CONNECTION |
| —I— | FLANGE |
| —CAP— | CAP |
| —CONT— | CONTINUATION |
| —FLOOR DRAIN— | FLOOR DRAIN (REFER TO PLUMBING DRAWINGS) |
| SUBSCRIPTS AND ABBREVIATIONS | |
| AF | ABOVE FINISHED FLOOR |
| BB | BELOW BOTTOM OF STRUCTURE |
| BD | BOTTOM OF DUCT |
| BP | BOTTOM OF PIPE |
| CA | COMBUSTION AIR |
| CFM | CUBIC FEET PER MINUTE |
| EA | EXHAUST AIR |
| FM | FEET PER MINUTE |
| NC | NORMALLY CLOSED |
| NO | NORMALLY OPEN |
| OA | OUTSIDE AIR |
| RA | RETURN AIR |
| SA | SUPPLY AIR |

MECHANICAL SCHEDULES

| | |
|-------------|------------|
| DATE | 08.31.2011 |
| PROJECT NO. | 1102100 |
| DRAWN BY | -- |
| CHECKED BY | -- |



This document is an instrument of service protected by the copyright law of the United States of America, 17 U.S.C. § 102, and shall not be copied or reproduced without the express written consent of Hermes Architects, Inc.

Hermes Architects

Members A.I.A.
 1177 West Loop South, Ste. 500
 Houston, Texas 77027
 Tel. 713-785-3644

www.hermesarchitects.com
 Houston • Dallas • Ft. Worth

