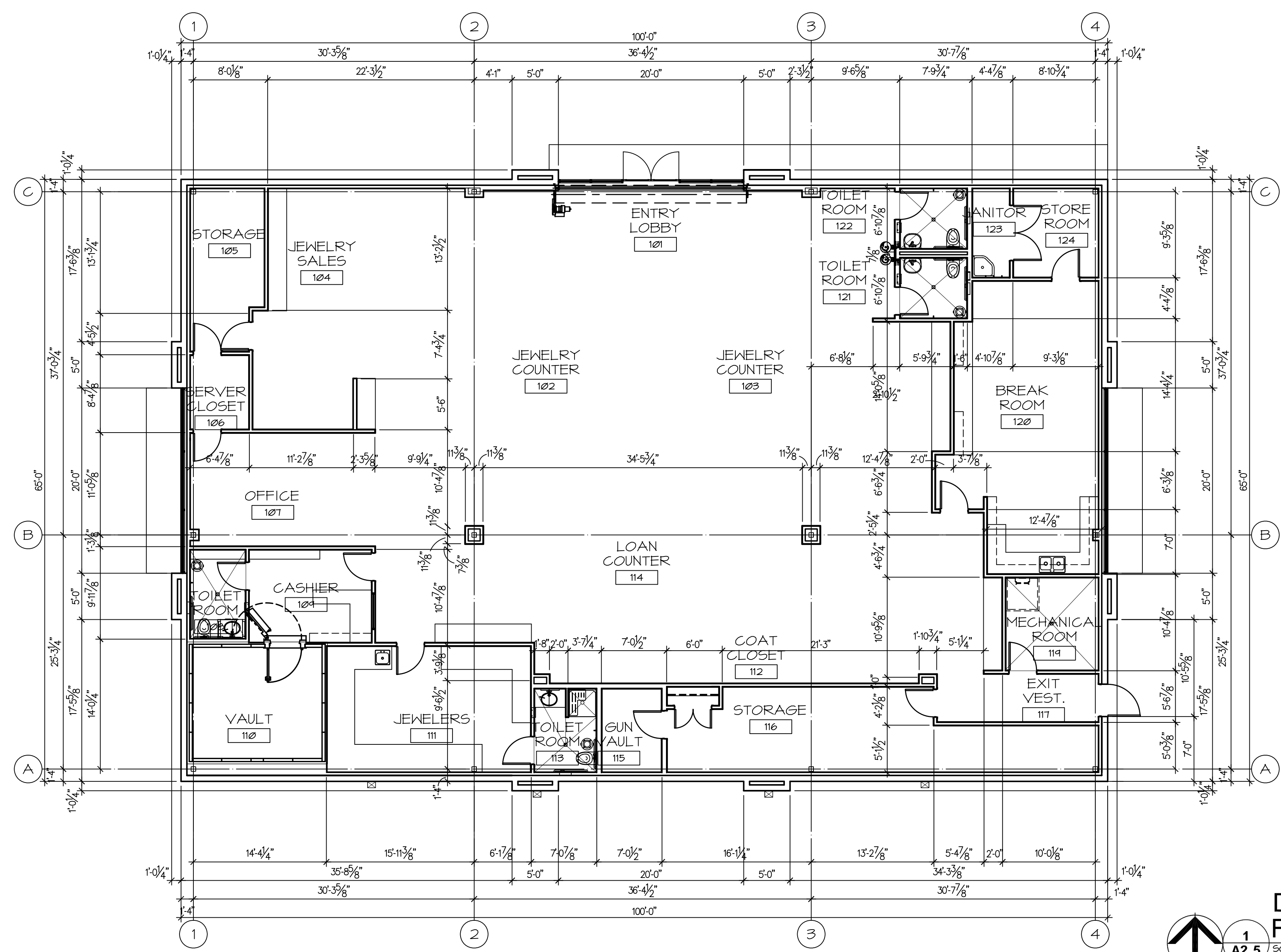


K:\1102100\DRAWINGS\4-PLOT SHEETS\A2.5 DIMENSIONED FLOOR PLAN.DWG 11/19/2011 9:39:07 AM DARREN PENWITT



1
A2.5
SCALE: 1/8" = 1'-0"

DO NOT SCALE THESE DRAWINGS FOR DIMENSIONAL INFORMATION. REFER TO DIMENSIONS ON THE FLOOR PLAN AND THE ENLARGED PLANS. IF THERE IS A CONFLICT WITH THE PLAN DIMENSIONS OR AN EXISTING FIELD CONDITION CONTACT THE ARCHITECT.

GENERAL DIMENSION NOTES:

1. REFERENCE SHEET A7.2 AND A7.3 FOR STEEL STUD WALLS AND METAL-STUD FURR-DOWN FRAMING DETAILS.
2. SEE INTERIOR ELEVATIONS AND FINISH PLANS FOR DETAILED FINISHES.
3. ALL DRYWALL PARTITION AND EXTERIOR WALL DIMENSIONS ARE TO FACE OF STUDS, STRIPPINGS, EITHER FACE OF EXTERIOR WALL OR CENTERLINE OF COLUMN, AS INDICATED.
4. ALL ANGLES ARE 90 DEGREES AND 45 DEGREES OFF HORIZONTAL AND VERTICAL, UNLESS OTHERWISE NOTED.
5. WHERE EQUIPMENT SIZE MAKES IT CRITICAL, VERIFY ALL DIMENSIONS OF WALLS WITH THE OWNER AND THE ARCHITECT PRIOR TO CONSTRUCTION.
6. DIMENSIONS MARKED "VERIFY" SHALL BE CONFIRMED BY AUCHAN AND/OR ARCHITECT PRIOR TO CONSTRUCTION.
7. CONTRACTOR IS RESPONSIBLE TO COORDINATE WORK OF SUBCONTRACTORS AND FIXTURE CONTRACTORS INCLUDING PERFORMANCE OF MISCELLANEOUS WORK NECESSARY FOR THEM TO COMPLETE THEIR WORK.
8. REFER TO FIXTURE PLAN AND EQUIPMENT DETAILS FOR FURTHER INFORMATION.
9. REFER TO FIXTURE MANUFACTURER'S REQUIREMENTS FOR LOCATION OF UTILITIES, FIXTURES, UNDERGROUND DUCTS, AND PIPE TRENCHES.
10. DIMENSIONS ON THIS SHEET ARE WALL DIMENSIONS, NOT FURR DOWN DIMENSIONS. SEE REFLECTED CEILING PLAN, AND BUILDING SECTIONS FOR FURR DOWN INFORMATION.
11. UNLESS OTHERWISE NOTED, ALL WALLS ENCLOSING COLUMNS SHALL BE CENTERED ON COLUMN LINES.

Hermes Architects

Members A.I.A.
1177 West Loop South, Ste. 500
Houston, Texas 77027
Tel. 713-785-3644
www.hermesarchitects.com
Houston • Dallas • Ft. Worth

This document is an instrument of service protected by the copyright law of the United States of America, 17 U.S.C. § 102, and shall not be copied or reproduced without the express written consent of Hermes Architects, Inc.



Shaw's Jewelers
West Gray
1021 West Gray Ave.
Houston, Texas

Shaw's Jewelers
1014 West Gray Street
Houston, Texas 77019

DATE	11.11.2011
PROJECT NO.	1102100
DRAWN BY	--
CHECKED BY	

Dimensioned
Floor Plan

A2.5