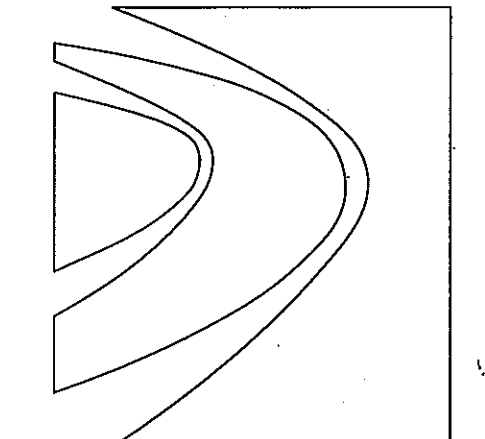


| HVAC SYMBOLS |  |
|--------------|--|
|              | THERMOSTAT   |
|              | DUCT SECTION RETURN/EXHAUST  |
|              | DUCT SECTION SUPPLY  |
|              | DUCT SIZE - FIRST FIGURE IS SIDE SHOWN   |
|              | LINED DUCTWORK   |
|              | MANUAL - DAMPER (MD)   |
|              | FLEXIBLE DUCT CONNECTION   |
|              | TYPICAL 90° LOW PRESSURE DUCT ELBOW (FURNISH AND INSTALL DOUBLE THICKNESS TURNING VANES) |
|              | TYPICAL 45° LOW PRESSURE DUCT ELBOW  |
|              | TERMINATED OPEN - ENDED DUCT   |
|              | 24'x24' CEILING DIFFUSER (TYPE-NECK Ø-CFM)   |
|              | RETURN (EXHAUST) AIR GRILLE  |
|              | SLOT DIFFUSER  |
|              | WALL MOUNTED PROPELLER FAN   |
|              | UNIT HEATER - HORIZONTAL   |
|              | MOTOR OPERATED DAMPER  |
|              | VIBRATION ISOLATOR   |
|              | CONDENSATE DRAIN   |
|              | FIRE DAMPER  |
|              | SMOKE DAMPER   |
|              | BRANCH ROUND DUCT W/ SPIN-IN-FITTING & MANUAL VOLUME DAMPER                              |
|              | DUCT TURNED DOWN   |
|              | DUCT TURNED UP   |
|              | FLEXIBLE DUCT  |
|              | SENSOR   |
|              | SMOKE DETECTOR   |
|              | OPENING ABOVE CEILING  |
|              | OPENING ABOVE CEILING WITH FIRE DAMPER   |
|              | DEMOLITION   |

| HVAC ABBREVIATIONS |   |        |                                       |
|--------------------|---|--------|---------------------------------------|
| %                  | PERCENT                                   | HZ     | HERTZ                                 |
| A/C                | ABOVE CEILING                             | IA     | INTAKE AIR                            |
| ACC                | AIR COOLED CHILLER                        | IN     | INCHES                                |
| ADJ                | ADJUSTABLE                                | KW     | KILOWATT                              |
| AF                 | ABOVE FINISHED FLOOR                      | L      | LOUVER                                |
| AFR                | ABOVE FINISHED ROOF                       | L & S  | LOUVER & SCREEN                       |
| AHU                | AIR HANDLING UNIT                         | LAT    | LEAVING AIR TEMPERATURE (DEGREE F)    |
| AP                 | ACCESS PANEL                              | LBG    | LINEAR BAR GRILLE                     |
| APLV               | APPLIED PART LOAD VALVE                   | LBS    | POUNDS                                |
| APPROX             | APPROXIMATE                               | LD     | LINEAR DIFFUSER                       |
| ARCH               | ARCHITECTURAL                             | LF     | LINEAR FEET                           |
| AS                 | ACOUSTIC SILENCER                         | LG     | LENGTH                                |
| ASSY               | ASSEMBLY                                  | LPH    | LOUVERED PENTHOUSE                    |
| ATC                | AUTOMATIC TEMPERATURE CONTROL             | LRA    | LOCKED ROTOR AMPS                     |
| AV                 | AUTOMATIC AIR VENT                        | LTD    | LINED TRANSFER DUCT                   |
| B                  | BOILER                                    | LVG    | LEAVING WATER TEMPERATURE             |
| BAL                | BALANCING COCK                            | LWT    | LEAVING WATER TEMPERATURE             |
| BDD                | BACKDRAFT DAMPER                          | MAV    | MANUAL AIR VENT                       |
| BF                 | BELOW FLOOR                               | MAX    | MAXIMUM                               |
| BLDG               | BUILDING                                  | MBS    | THOUSAND BTU PER HOUR                 |
| BMS                | BUILDING MANAGEMENT SYSTEM                | MCA    | MINIMUM CIRCUIT AMPS                  |
| BOD                | BOTTOM OF DUCT                            | MECH   | MECHANICAL                            |
| BOP                | BOTTOM OF PIPE                            | MD     | MANUAL DAMPER                         |
| BRD SCR            | BIRD SCREEN                               | MIN    | MINIMUM                               |
| BTUH               | BRITISH THERMAL UNIT PER HOUR             | MOD    | MOTORIZED DAMPER                      |
| BV                 | BALL VALVE                                | MTD    | MOUNTED                               |
| CAC                | CONTROL AIR COMPRESSOR                    | N/A    | NOT APPLICABLE                        |
| CAP                | CAPACITY                                  | NC     | NORMALLY CLOSED                       |
| CC                 | COOLING COIL                              | NIC    | NOT IN CONTRACT                       |
| CD                 | CEILING DIFFUSER                          | NO     | NORMALLY OPEN                         |
| CFM                | CUBIC FEET PER MINUTE                     | NOM    | NOMINAL                               |
| CH                 | CHILLER                                   | NPSHA  | NET POSITIVE SUCTION HEAD AVAILABLE   |
| CHWP               | CHILLED WATER PUMP                        | NPSHR  | NET POSITIVE SUCTION HEAD REQUIREMENT |
| CHWR               | CHILLED WATER RETURN                      | OA     | OUTSIDE AIR                           |
| CHWS               | CHILLED WATER SUPPLY                      | OBD    | OPPOSED BLADE DAMPER                  |
| CLC                | CEILING CLEAR                             | OC     | ON CENTER                             |
| CLR                | CLEAR                                     | OCNT   | OPERATING                             |
| CONC               | CONCRETE                                  | OPG    | OPENING                               |
| CONN               | CONNECT / CONNECTION                      | PD     | PRESSURE DROP                         |
| CONT               | CONTINUATION                              | PG     | PRESSURE GAUGE                        |
| CR                 | CONDENSATE REUTRN                         | PH     | PHASE                                 |
| CRU                | COMPUTER ROOM UNIT                        | PIU    | POWERED INDUCTION UNIT                |
| CSP                | COMBINATION STAND PIPE                    | PRESS  | PRESSURE                              |
| CT                 | COILING TOWER                             | PSIA   | PRESSURE PER SQUARE INCH ABSOLUTE     |
| CU                 | CONDENSING UNIT                           | PSIG   | PRESSURE PER SQUARE INCH GAUGE        |
| CUH                | CABINET UNIT HEATER                       | RA     | RETURN AIR                            |
| CV                 | CHECK VALVE                               | RAD    | REFRIGERATED AIR DRYER                |
| CW                 | COLD WATER                                | RAG    | RETURN AIR GRILLE                     |
| CWP                | CONDENSER WATER PUMP                      | RAR    | RETURN AIR REGISTER                   |
| CWR                | CONDENSER WATER RETURN                    | RED    | REDUCER                               |
| CWS                | CONDENSER WATER SUPPLY                    | REFG   | REFRIGERANT                           |
| D                  | DEGREE FAHRENHEIT                         | REG    | REGISTER                              |
| DB                 | DRY BULB TEMPERATURE (DEGREE F)           | REQ'T  | REQUIREMENT                           |
| DDC                | DIRECT DIGITAL CONTROL                    | RH     | RELATIVE HUMIDITY                     |
| DEG                | DEGREE                                    | RL     | REFRIGERANT LIQUID                    |
| DIA                | DIAMETER                                  | RPM    | REVOLUTION PER MINUTE                 |
| DIFF               | DIFFUSER                                  | RP/BFP | REDUCED PRESSURE BACKFLOW PREVENTER   |
| DIR                | DIRECT                                    | RM     | ROOM                                  |
| DIRC               | DISCONNECT                                | RS     | REFRIGERANT SUCTION                   |
| DIV                | DIVISION                                  | RTU    | ROOF TOP UNIT                         |
| DN                 | DOWN                                      | SA     | SUPPLY AIR                            |
| DT                 | DAY TANK                                  | SD     | SMOKE DAMPER                          |
| DWG                | DRAWING                                   | SENS   | SENSIBLE                              |
| EACH               | EACH                                      | SG     | SUPPLY GRILLE                         |
| EAT                | ENTERING AIR TEMPERATURE                  | SH     | SENSIBLE HEAT                         |
| EDH                | ELECTRIC DUCT HEATER                      | SP     | STATIC PRESSURE (INCHES OF WATER)     |
| EFF                | EFFICIENCY                                | SPD    | SPLITTER DAMPER                       |
| EF                 | EXHAUST FAN                               | SPEC   | SPECIFICATION                         |
| EG                 | EXHAUST GRILLE                            | SQ     | SQUARE                                |
| ELEC               | ELECTRICAL                                | SQ FT  | SQUARE FEET                           |
| ENT                | ENTERING                                  | SR     | SUPPLY REGISTER (MECH ONLY)           |
| ER                 | EXHAUST REGISTER                          | SS     | STAINLESS STEEL                       |
| ES                 | EXPOSED STRUCTURE                         | STD    | STANDARD                              |
| ESP                | EXTERNAL STATIC PRESSURE                  | STR    | STRAINER                              |
| EWIT               | ENTERING WATER TEMPERATURE                | STRUCT | STRUCTURAL                            |
| EXH                | EXHAUST                                   | SV     | SOLENOID VALVE                        |
| F                  | FIRE                                      | SWD    | SIDEWALL DIFFUSER                     |
| FA                 | FREE AREA                                 | T-STAT | THERMOSTAT                            |
| FCU                | FAN COIL UNIT                             | T&PRV  | TEMPERATURE AND PRESSURE RELIEF VALVE |
| FD                 | FIRE DAMPER (MECH ONLY)                   | TD     | TRANSFER DUCT                         |
| FIN                | FINISHED                                  | TDH    | TOTAL DYNAMIC HEAD                    |
| FLA                | FULL LOAD AMPS                            | TEMP   | TEMPERATURE                           |
| FLEX               | FLEXIBLE                                  | TG     | TRANSFER GRILLE                       |
| FLR                | FLOOR                                     | TSP    | TOTAL STATIC PRESSURE                 |
| FOD                | FACE OPERATED DAMPER                      | TYP    | TYPICAL                               |
| FPM                | FEET PER MINUTE                           | UC     | UNDERCUT                              |
| FRP                | FIBERGLASS REINFORCED PIPE                | UG     | UNDERGROUND                           |
| FSD                | FIRE/SMOKE DAMPER                         | UH     | UNIT HEATER                           |
| FT                 | FEET                                      | UL     | UNDERWRITERS LABORATORIES LISTING     |
| FTR                | FINNED TUBE RADIATION                     | UN     | UNION                                 |
| GA                 | GALLON                                    | UNO    | UNLESS NOTED OTHERWISE                |
| GAL                | GALLON                                    | VT     | VOLT                                  |
| GC                 | GENERAL CONTRACTOR                        | VA     | VALVE                                 |
| GLV                | GLOBE VALVE                               | VD     | VOLUME DAMPER                         |
| GPM                | GALLON PER MINUTE                         | VEL    | VELOCITY                              |
| GR                 | GRADE                                     | VAV    | VARIABLE AIR VOLUME UNIT              |
| GTH                | GRAND TOTAL HEAT                          | W      | WATT                                  |
| GV                 | GATE VALVE                                | WB     | WET BULB TEMPERATURE (DEGREE F)       |
| GYP                | GYP-SUM                                   | WC     | WATER COLUMN                          |
| H                  | HUMIDIFIER                                | WDH    | WATER COLUMN                          |
| HC                 | HANDICAPPED                               | WG     | WATER GAUGE                           |
| H/C                | HEATING COIL                              | WH     | WALL HEATER (MECH ONLY)               |
| HD                 | HOOD                                      | WT     | WEIGHT                                |
| HG                 | MERCURY                                   |        |                                       |
| HP                 | HORSEPOWER                                |        |                                       |
| HPU                | HEAT PUMP UNIT                            |        |                                       |
| HR                 | HOUR                                      |        |                                       |
| HT                 | HEIGHT                                    |        |                                       |
| HTG                | HEATING                                   |        |                                       |
| HVAC               | HEATING, VENTILATING AND AIR CONDITIONING |        |                                       |



Pate Design Group, Inc.  
 Architecture / Interiors  
 4168 Abbots Bridge Road  
 Duluth, Georgia 30097  
 (p) 770-814-0885  
 (f) 770-814-0886

kirby@patedesigngroup.com

A TENANT IMPROVEMENT  
**MELLOW MUSHROOM**  
 1600 STUBBNER AIRLINE ROAD  
 SUITE G  
 SPRING, TEXAS  
 HARRIS COUNTY

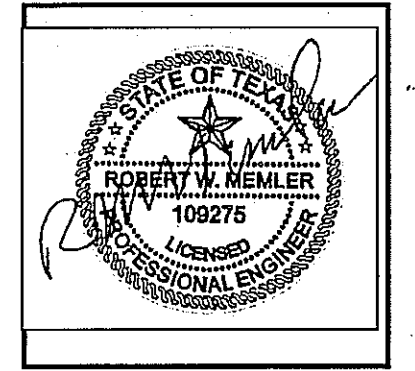
Revisions:

| No. | Date       | Description |
|-----|------------|-------------|
| 1   | 01.09.2012 | FOR PERMIT  |
| -   | -          | -           |
| -   | -          | -           |
| -   | -          | -           |
| -   | -          | -           |
| -   | -          | -           |
| -   | -          | -           |
| -   | -          | -           |
| -   | -          | -           |
| -   | -          | -           |

LEGENDS +  
 ABBREVIATIONS.

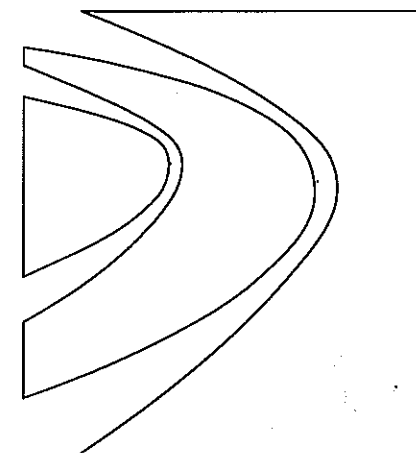
Drawn \_\_\_\_\_  
 Checked \_\_\_\_\_  
 Contract No. \_\_\_\_\_  
 Scale \_\_\_\_\_  
 Date \_\_\_\_\_  
 Last Rev. \_\_\_\_\_

**M0.1**  
 x of sheets



THIS DRAWING IS THE PROPERTY OF PATE DESIGN GROUP AND IS NOT TO BE COPIED IN WHOLE OR IN PART. IT IS TO BE USED FOR THE PROJECT AND SITE SPECIFICALLY IDENTIFIED HEREIN AND IS NOT TO BE USED IN ANY OTHER PROJECT. IT IS TO BE RETURNED UPON REQUEST.

RELEASED FOR CONSTRUCTION



Pate Design Group, Inc.  
Architecture / Interiors

4168 Abbotts Bridge Road  
Duluth, Georgia 30097

(p) 770-814-0885  
(f) 770-814-0886

kirby@patedesigngroup.com

A TENANT IMPROVEMENT  
**MELLOW MUSHROOM**  
16000 STUEBNER AIRLINE ROAD  
SUITE G

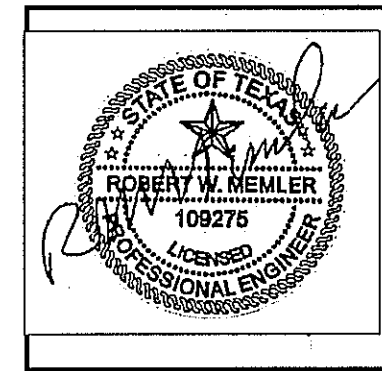
SPRING, TEXAS  
HARRIS COUNTY

Revisions:

| No. | Date       | Description |
|-----|------------|-------------|
| 1   | 01.09.2012 | FOR PERMIT  |
|     |            |             |
|     |            |             |
|     |            |             |
|     |            |             |
|     |            |             |
|     |            |             |
|     |            |             |
|     |            |             |

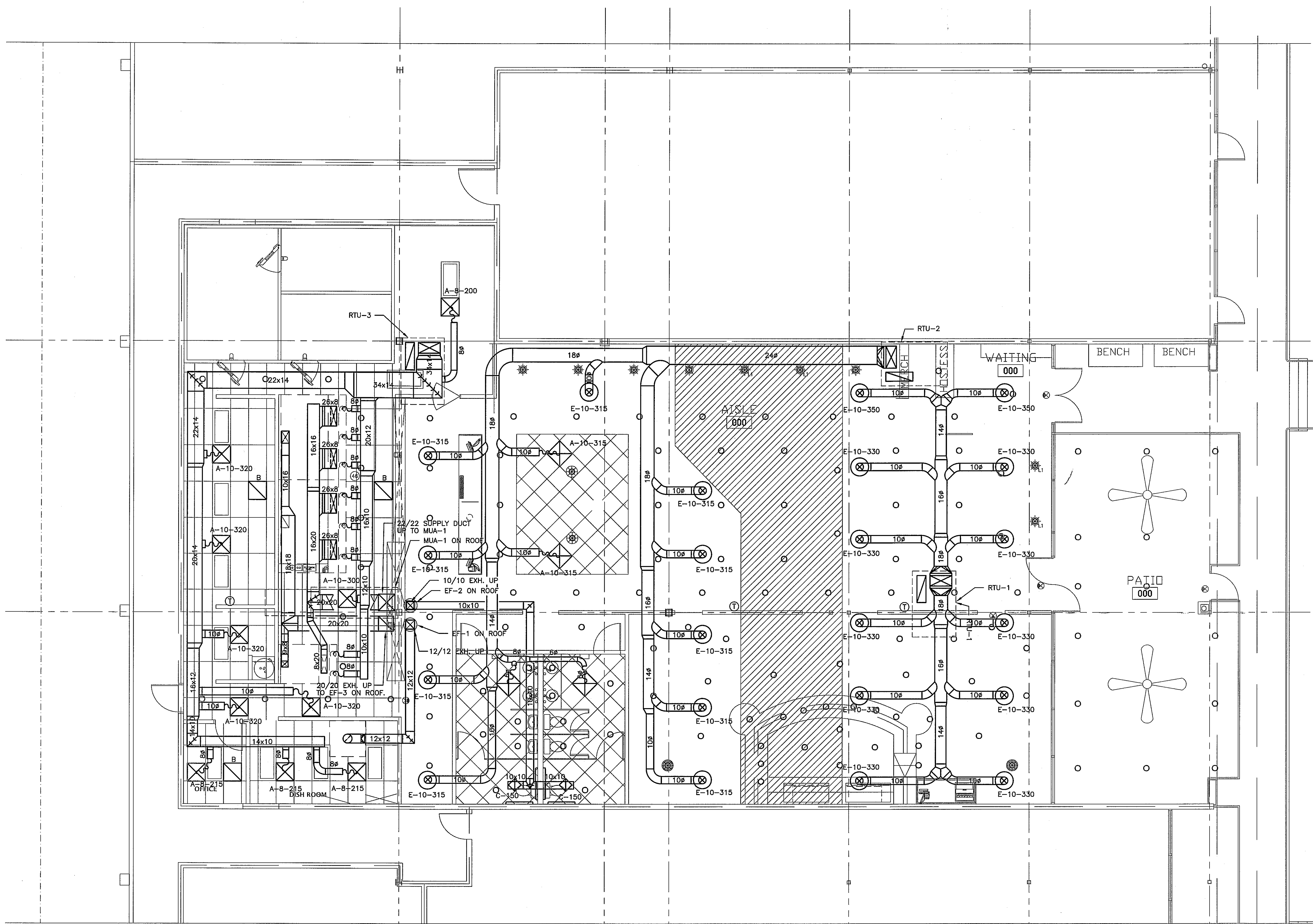
FLOOR PLAN  
HVAC

Drawn \_\_\_\_\_  
 Checked \_\_\_\_\_  
 Contract No. \_\_\_\_\_  
 Scale \_\_\_\_\_  
 Date \_\_\_\_\_  
 Last Rev. \_\_\_\_\_



**M1.1**  
x of sheets

RELEASED FOR CONSTRUCTION



1 FLOOR PLAN - HVAC  
3/16" = 1'-0"

THIS DRAWING IS THE PROPERTY OF PATE DESIGN GROUP AND IS NOT TO BE COPIED IN WHOLE OR IN PART. IT IS TO BE USED FOR THE PROJECT AND SITE SPECIFICALLY IDENTIFIED HEREIN AND IS NOT TO BE USED IN ANY OTHER PROJECT. IT IS TO BE RETURNED UPON REQUEST.

| BUILDING/KITCHEN EXHAUST AIR BALANCE |                |                            |             |                 |
|--------------------------------------|----------------|----------------------------|-------------|-----------------|
| AREA                                 | SERVICE        | EXHAUST AIR CFM            | MAKE-UP AIR | APPLICABLE UNIT |
| KITCHEN                              | HOOD EXHAUST   | 18.67 L.F. @ 185 CFM/L.F.  | 3454 CFM    | EF-3            |
| KITCHEN                              | HOOD EXHAUST   | 4.33 L.F. @ 185 CFM/L.F.   | 802 CFM     | EF-3            |
| KITCHEN                              | HOOD SUPPLY    | 80% HOOD EXHAUST AIR       | 3508 CFM    | MUA-1           |
| KITCHEN                              | DISH. EXHAUST  |                            | 600 CFM     | EF-1            |
| TOIL. ROOMS                          | TOILET EXHAUST |                            | 450 CFM     | EF-2            |
| KIT/DINING                           | ROOF TOP UNITS | 117 PEOPLE @ 20 CFM/PERSON | 1798 CFM    | RTU-1, 2 & 3    |
|                                      |                | 5306 CFM                   | 5306 CFM    |                 |

| GAS-FIRED PACKAGED ROOF TOP UNIT SCHEDULE |             |        |      |                |     |                         |                |                |              |                   |             |         |            |             |          |                             |           |
|---|-------------|--------|------|----------------|-----|-------------------------|----------------|----------------|--------------|-------------------|-------------|---------|------------|-------------|----------|-----------------------------|-----------|
| MARK                                      | SERVICE     | WEIGHT | CFM  | MIN. O. A. CFM | HP  | E.S.P. H <sub>2</sub> O | COOLING        |                |              |                   | HEATING     |         |            |             | MIN. EER | MANUFACTURER & MODEL NUMBER | REMARKS   |
|   |             |        |      |                |     |                         | TOT. CAP. BTUH | SEN. CAP. BTUH | E.A.T. DB WB | E.A.T. INPUT BTUH | OUTPUT BTUH | A.FUE   | INPUT BTUH | OUTPUT BTUH |          |                             |           |
| RTU-1                                     | KITCHEN     | 1099   | 4000 | 1348           | 4.0 | 1.0                     | 119,500        | 89,600         | 80.0         | 67.0              | 70.0        | 180,000 | 148,000    | 80          | 11.5     | CARRIER 48HCDD12            | SEE NOTES |
| RTU-2                                     | DINING ROOM | 1099   | 4000 | 225            | 4.0 | 1.0                     | 119,500        | 89,600         | 80.0         | 67.0              | 70.0        | 180,000 | 148,000    | 80          | 11.5     | CARRIER 48HCDD12            | SEE NOTES |
| RTU-3                                     | DINING ROOM | 1099   | 4000 | 225            | 4.0 | 1.0                     | 119,500        | 89,600         | 80.0         | 67.0              | 70.0        | 180,000 | 148,000    | 80          | 11.5     | CARRIER 48HCDD12            | SEE NOTES |

NOTES:

1. PROVIDE 14" HIGH FACTORY ROOF MOUNTING CURB, 2"-35% PLEATED FILTERS FOR ALL UNITS.
2. MINIMUM EER (AT ARI STANDARD 210 CONDITIONS) TO BE EQUAL TO THAT SCHEDULED; SCHEDULED COOLING CAPACITY IS AT 95 AMBIENT.
3. DISCONNECTS AND STARTERS BY MECHANICAL CONTRACTOR.
4. ACCEPTABLE MANUFACTURERS: TRANE, CARRIER, McQUAY.
5. OUTSIDE AIR IS BASED ON AN OCCUPANCY OF 100 SQ. FT. PER PERSON AND 15 CFM PER PERSON I.A.W. SMC TABLE 403.3.
6. RTU'S SHALL BE PROVIDED WITH 100% OUTSIDE AIR ECONOMIZER DAMPERS AND CONTROLS.

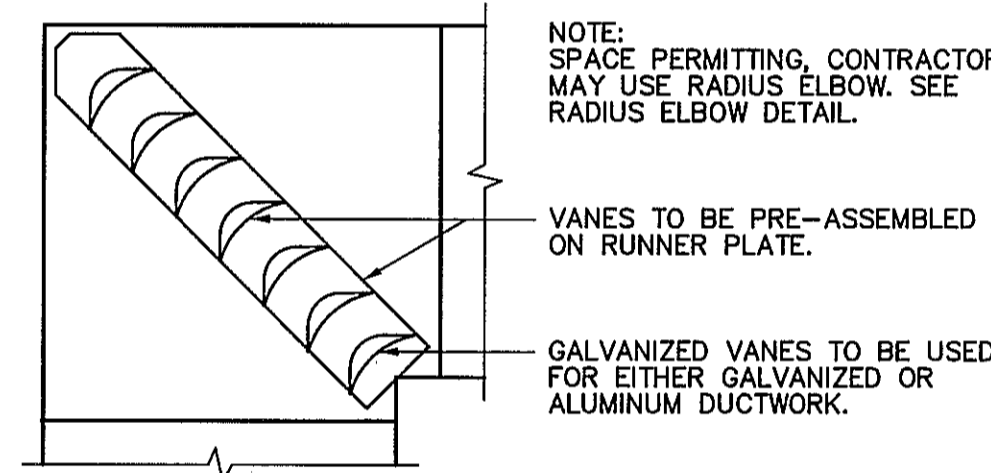
HVAC GENERAL NOTES

1. THESE GENERAL NOTES SHALL APPLY TO ALL MECHANICAL SHEETS.
2. ALL DUCT SIZES ARE CLEAR INSIDE DIMENSIONS - INSULATE AS SPECIFIED; PROVIDE FLEXIBLE CONNECTIONS AS DETAILED AT ALL FANS AND ROOFTOP UNITS.
3. PROVIDE SHOP DRAWINGS SHOWING EXACT SIZES & LOCATIONS OF ALL ROOF & WALL OPENINGS REQUIRED PRIOR TO CONSTRUCTION. STRUCTURAL FRAMES AROUND ALL OPENINGS SHALL BE FURNISHED AND INSTALLED AS REQUIRED.
4. GAS PIPING FOR HVAC EQUIPMENT SHALL BE SUPPLIED COMPLETE INCLUDING ROUGH-IN, FINAL CONNECTIONS AND TESTING.
5. SUPPORT ALL DUCTS, PIPES & INSULATION, ETC. FROM BUILDING STRUCTURE WITH HSTEEL ANGLES AND 1", 24 GAGE STRAP.
6. HVAC CONTRACTOR SHALL LOCATE ROOF CURBS AND SUPPORTS FOR ROOF MOUNTED EQUIPMENT. ALL UNIT CURBS SHALL BE FACTORY STANDARD.
7. REFER TO ARCHITECTURAL DRAWINGS FOR CLEARANCES, CEILING HEIGHTS AND DETAILS - SEE ELEVATIONS AND REFLECTED CEILING PLANS FOR EXACT LOCATIONS OF AIR DEVICES AND EXPOSED DUCTS.
8. FLEXIBLE INSULATED DUCT SIZES ARE INSIDE DIMENSIONS - INSULATE AND VAPOR SEAL CEILING DIFFUSER NECKS, TRANSITIONS & "SPIN-IN" TAPS, NO SCOOPS.
9. PROVIDE SLEEVES AND FLASHINGS REQUIRED FOR PIPING AND DUCTWORK PENETRATIONS; PROVIDE ESCUTCHEON PLATES FOR ALL PIPING PENETRATING FINISHED WALLS & CEILINGS.
10. PIPE CONDENSATE DRAINS FROM ALL ROOF TOP UNITS TO NEAREST DOWNSPOUT AT REAR OF BUILDING.

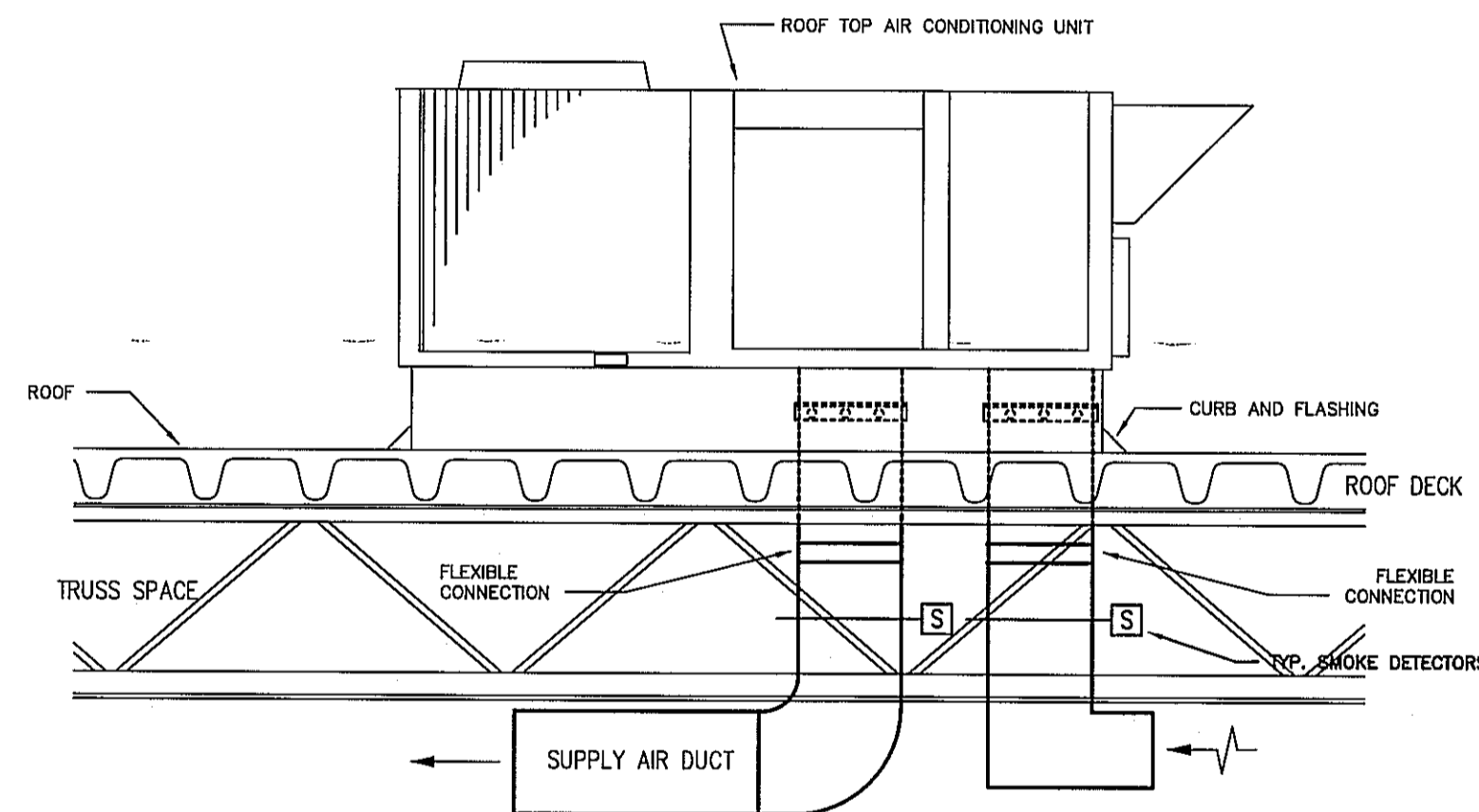
| FAN SCHEDULE |          |             |                      |      |                  |                 |            |                      |         |                   |                  |           |
|--------------|----------|-------------|----------------------|------|------------------|-----------------|------------|----------------------|---------|-------------------|------------------|-----------|
| DESIG        | LOCATION | DESCRIPTION | SERVICE              | CFM  | EXT SP INCHES WC | APPROX MOTOR HP | TYPE DRIVE | NOM WHEEL DIA INCHES | MAX RPM | MAX TIP SPEED FPM | BASIS OF DESIGN  | REMARKS   |
| EF-1         | AS SHOWN | PRV         | DISHWASHER HOOD      | 600  | 0.50             | 0.333           | BELT       | -                    | -       | -                 | BY OTHERS        | SEE NOTES |
| EF-2         | AS SHOWN | PRV         | TOILET EXHAUST       | 450  | 0.25             | 0.25            | BELT       | -                    | -       | -                 | GREENHECK GB-100 | SEE NOTES |
| EF-3         | AS SHOWN | UTILITY FAN | KITCHEN HOOD 2, 3, 4 | 4256 | 2.5              | 5.0             | BELT       | -                    | -       | -                 | BY OTHERS        | SEE NOTES |
| MUA-1        | AS SHOWN | PRV         | HOOD SUPPLY          | 3508 | 0.60             | 1.5             | BELT       | -                    | -       | -                 | BY OTHERS        | SEE NOTES |

1. MOTOR EFFICIENCY SHALL BE EQUAL TO OR ABOVE GOULD E-PLUS.
2. PROVIDE EF-1 & 2 WITH FACTORY ROOF CURB.
3. INTERLOCK EXHAUST FANS EF-2 WITH ROOF TOP UNITS.

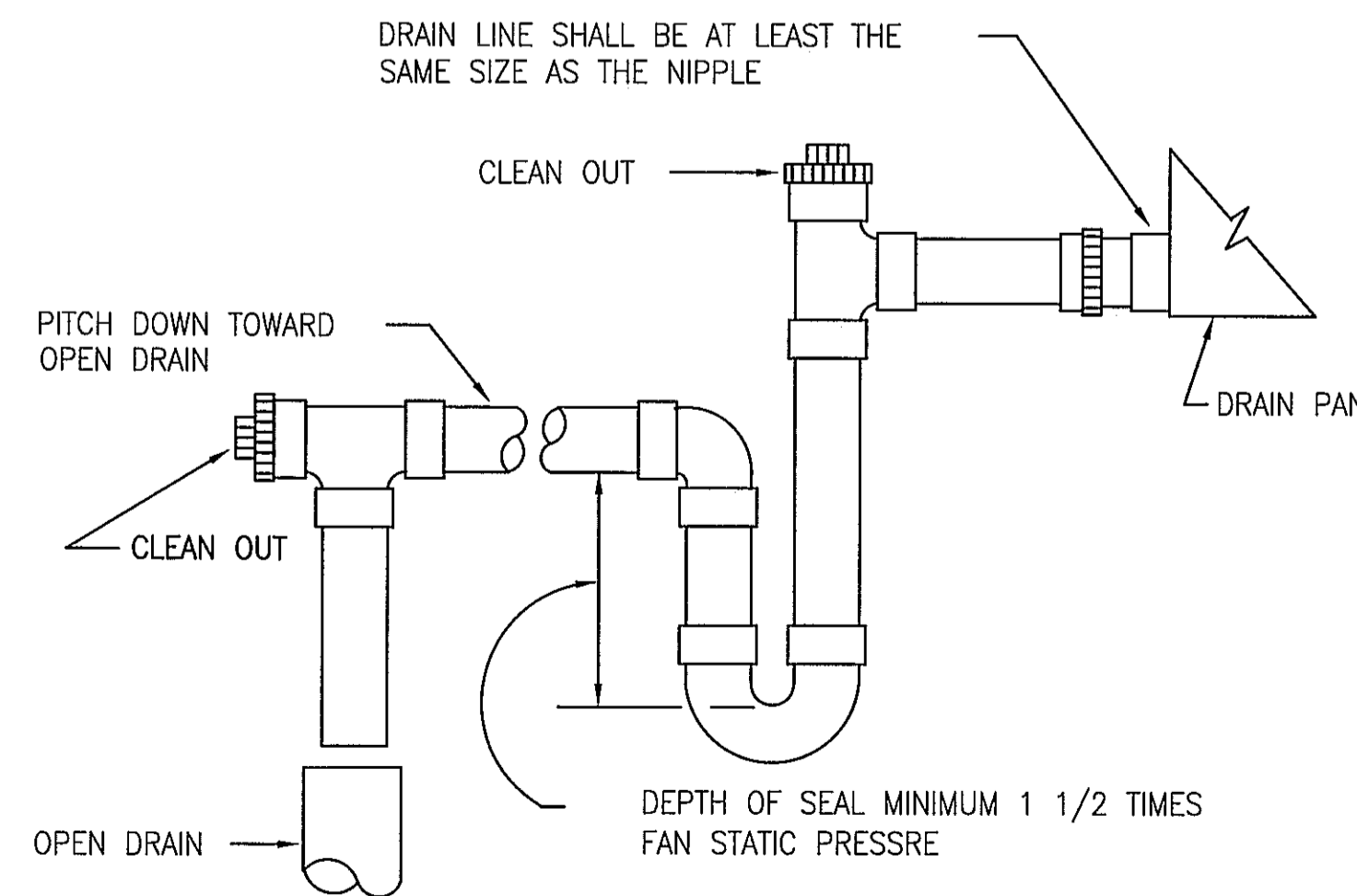
| DIFFUSER SCHEDULE      |           |           |           |           |           |
|------------------------|-----------|-----------|-----------|-----------|-----------|
| MARK                   | A         | B         | C         | D         | E         |
| FACE SIZE              | 24x24     | 12x12     | 12x12     | 24x24     | 24"φ      |
| NECK SIZE              | SHOWN     | SHOWN     | SHOWN     | 22x22     | SHOWN     |
| FRAME                  | LAY-IN    | LAY-IN    | LAY-IN    | LAY-IN    | SURFACE   |
| DAMPER                 | O.B.D.    | O.B.D.    | O.B.D.    | -         | O.B.D.    |
| MANUFACTURER MODEL NO. | TITUS TMS | TITUS TMS | TITUS 50F | TITUS 50F | TITUS TMR |



SQUARE ELBOW WITH DOUBLE THICKNESS VANES

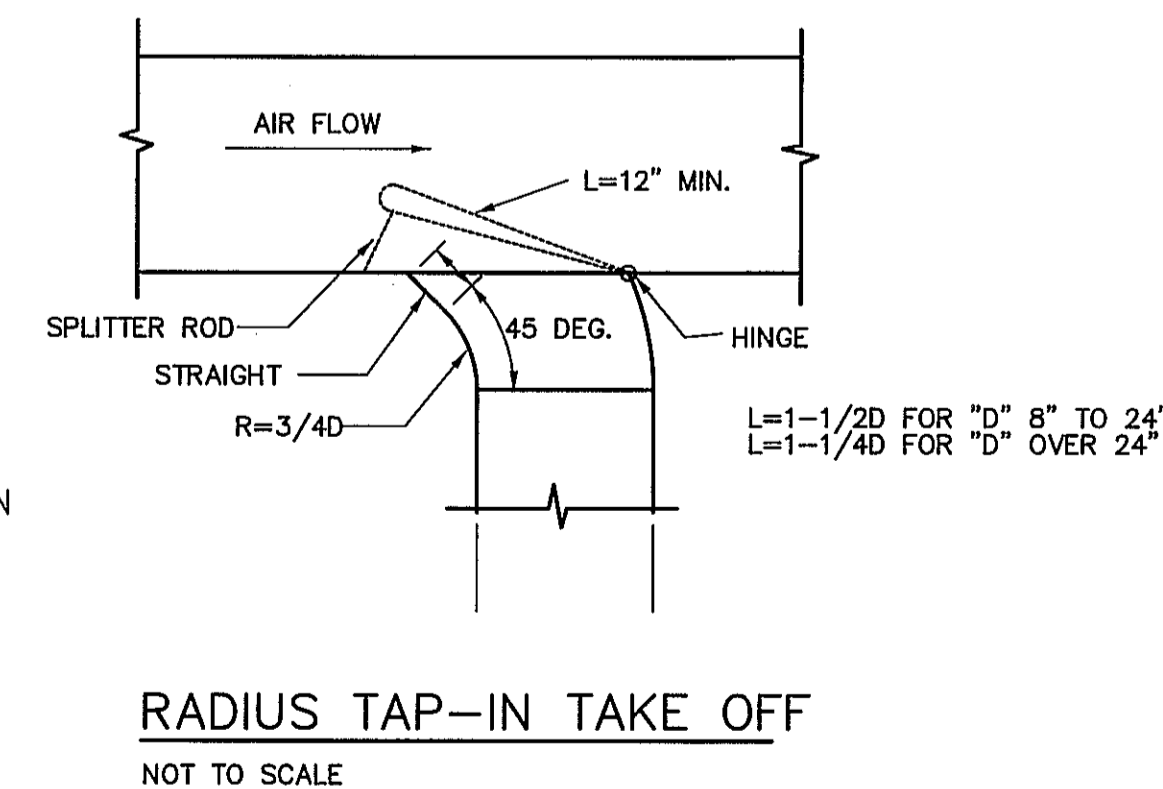


1 M2.1 ROOF TOP AIR CONDITIONING UNITS NOT TO SCALE

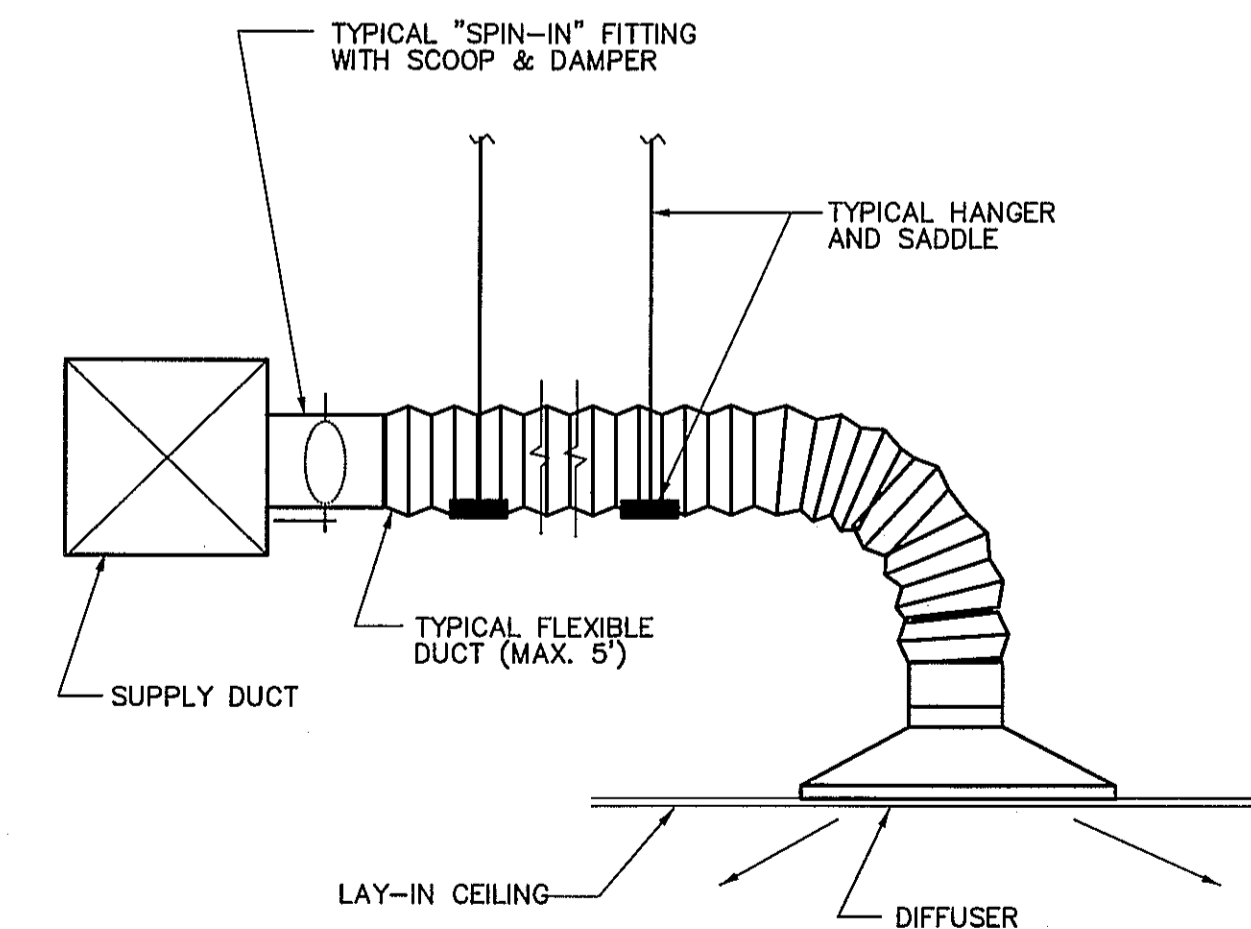


TYP. CONDENSATE DRAIN TRAP NOT TO SCALE

2 M2.1



RADIUS TAP-IN TAKE OFF NOT TO SCALE



TYPICAL FLEXIBLE DUCT TAKE-OFF DETAIL NOT TO SCALE

Revisions:

| No. | Date       | Description |
|-----|------------|-------------|
| 1   | 01.09.2012 | FOR PERMIT  |
| -   | -          | -           |
| -   | -          | -           |
| -   | -          | -           |
| -   | -          | -           |
| -   | -          | -           |
| -   | -          | -           |
| -   | -          | -           |
| -   | -          | -           |
| -   | -          | -           |

DETAILS + SCHEDULES

Drawn \_\_\_\_\_

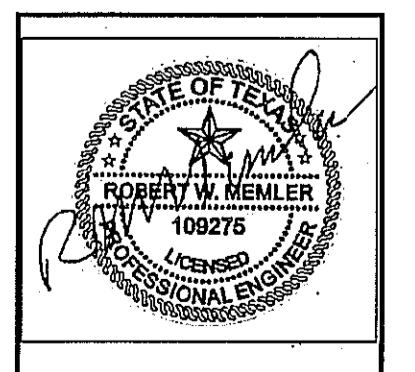
Checked \_\_\_\_\_

Contract No. \_\_\_\_\_

Scale \_\_\_\_\_

Date \_\_\_\_\_

Last Rev. \_\_\_\_\_



M2.1

x of sheets

THIS DRAWING IS THE PROPERTY OF PATE DESIGN GROUP AND IS NOT TO BE COPIED IN WHOLE OR IN PART. IT IS TO BE USED FOR THE PROJECT AND SITE SPECIFICALLY IDENTIFIED HEREIN AND IS NOT TO BE USED IN ANY OTHER PROJECT. IT IS TO BE RETURNED UPON REQUEST.

Pate Design Group, Inc.  
Architecture / Interiors

4168 Abbotts Bridge Road  
Duluth, Georgia 30097

(p) 770-814-0885  
(f) 770-814-0886

kirby@patedesigngroup.com

A TENANT IMPROVEMENT  
MELLOW MUSHROOM  
16000 STUEBNER AIRLINE ROAD  
SUITE G  
SPRING, TEXAS  
HARRIS COUNTY

RELEASED FOR CONSTRUCTION