

GRILLE SIZING SCHEDULE

GRILLE SIZE DESIGNATION	GRILLE NECK SIZE	GRILLE SIZE DESIGNATION	GRILLE NECK SIZE
1	6" x 6"	7	15" x 15"
2	8" x 8"	8	16" x 16"
3	9" x 9"	9	18" x 18"
4	10" x 10"	10	20" x 20"
5	12" x 12"	11	22" x 22"
6	14" x 14"	12	24" x 24"

STANDARD GRILLE
DESIGNATES GRILLE TYPE (REFERENCED GRILLE SCHEDULE)
AIR QUANTITY IN CFM CONNECTING GRILLE TO DUCTWORK

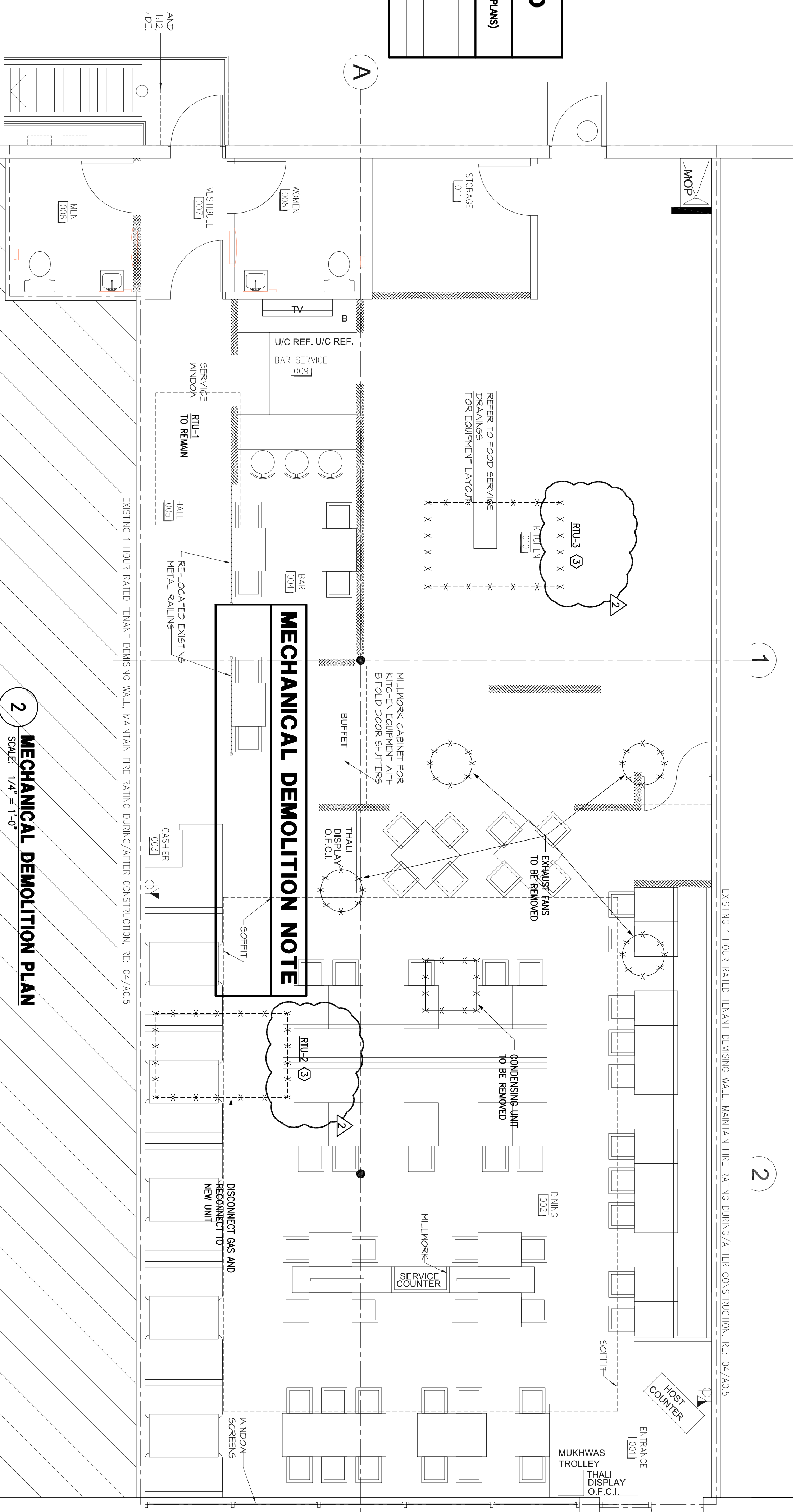
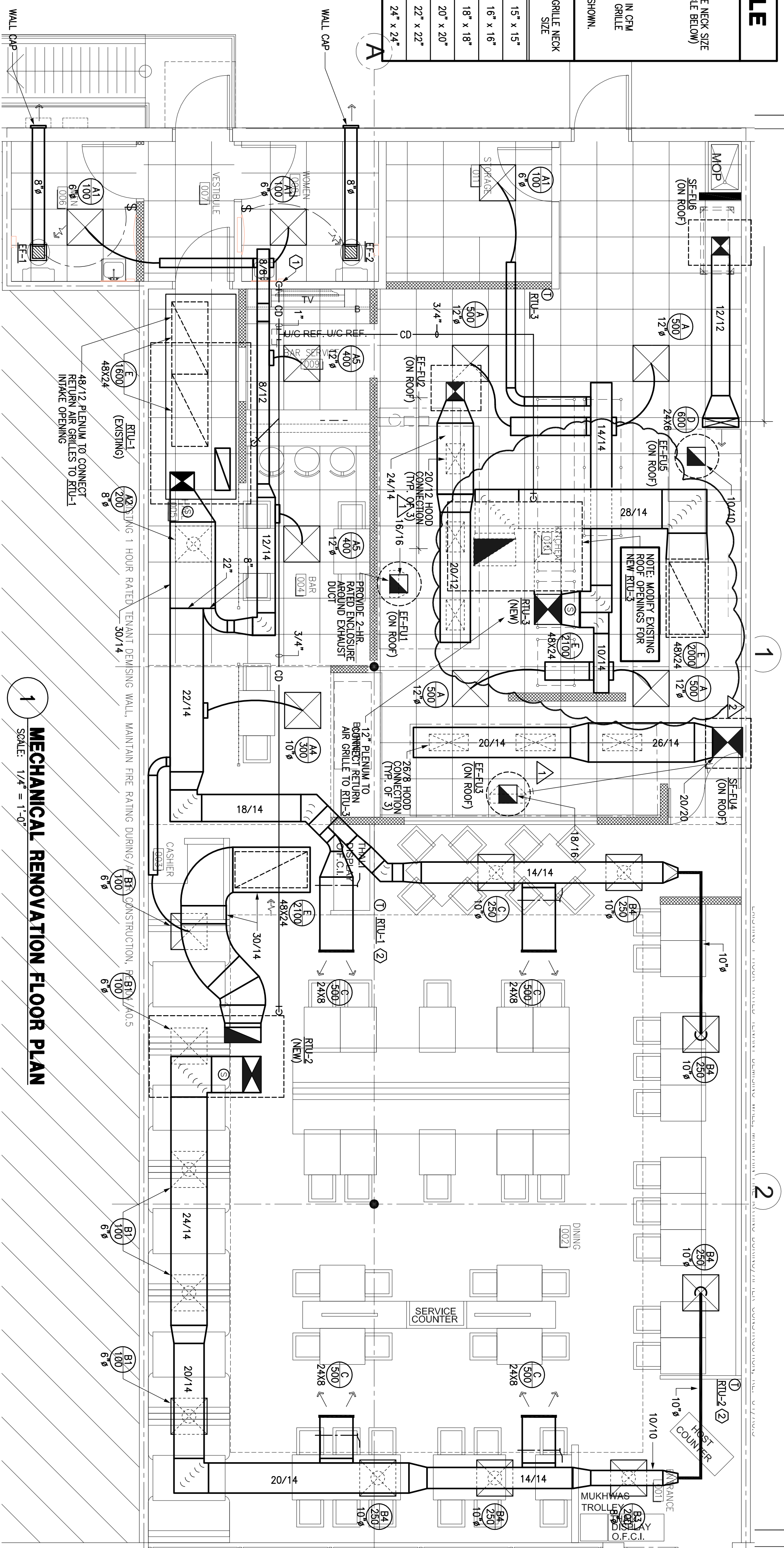
DESIGNATES GRILLE NECK SIZE (REFERENCED TABLE BELOW)

SIZE OF FLEX OR RIGID DUCT CONNECTING GRILLE TO DUCTWORK

ALL GRILLES SHOWN SHALL BE FOUR-WAY THROW UNLESS OTHERWISE SHOWN.

DEMOLITION LEGEND

SYMBOL	DESCRIPTION (DISREGARD ITEMS NOT SHOWN ON PLANS)
---	PILING TO BE REMAIN
---	PILING TO BE REMOVED
---	EQUIPMENT TO BE REMAIN
---	EQUIPMENT TO BE REMOVED



MECHANICAL KEYED NOTES

- ROUTE CONDENSATE DOWN WALL TO SINK FITTING. RE PLUMBING OWNS.
- PROVIDE A 7-9XV PROGRAMMABLE THERMOSTAT.
- REMOVE EXISTING ROOF TOP UNIT AND ALL ASSOCIATED DUCTWORK. ROOF CURB TO REMAIN FOR USE WITH NEW ROOF TOP UNIT.
- PROVIDE SUITABLE ROOF CURB ADAPTER TO ACCOMMODATE NEW ROOF TOP UNIT PROVIDED.

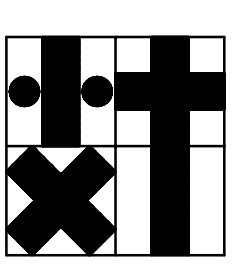
MECHANICAL GENERAL NOTES

- CODES, RULES AND REGULATIONS - DESIGN OF SYSTEM
 - ALL WORK AND MATERIALS SHALL BE IN FULL ACCORDANCE WITH ALL APPLICABLE FEDERAL, STATE, AND LOCAL LAWS, ORDINANCES AND CODES.
- WHEN THE DRAWINGS CALL FOR MATERIALS OR CONSTRUCTION OF A BETTER QUALITY OR LARGER SIZES THAN REQUIRED BY THE ABOVE MENTIONED CODES AND RULES, WORK SHALL BE AS SPECIFIED OR SHOWN RATHER THAN AS REQUIRED BY THE ABOVE MENTIONED CODES AND RULES. THE MECHANICAL SYSTEMS REQUIRED BY CODE SHALL BE INCLUDED, EVEN THOUGH NOT SPECIFIED HEREIN.
- INSTALLATION OF THE SYSTEMS SHALL BE IN ACCORDANCE WITH THE ABOVE MENTIONED CODES AND REGULATIONS AND ALSO SHALL CONFORM TO GOOD, ACCEPTED MECHANICAL PRACTICES.
- PROVIDE AND INSTALL VOLUME DAMPERS IN ALL BRANCH DUCTS, AIR HANDLING UNITS.
- EXTERIOR DUCTS TO BE GASS-TIGHT 8'-0", MAXIMUM IN LENGTH, WHERE APPLICABLE.
- COORDINATE EXACT LOCATION OF ALL AIR OUTLETS AND INLETS (OVERSEERS, REGISTERS AND GRILLES) WITH APPROPRIATE ARCHITECTURAL PLAN, AND VERIFY THEIR LOCATION WITH ARCHITECT ON THE JOB SITE BEFORE INSTALLATION. COLOR AS DIRECTED BY OWNER.
- AUTOMATIC TEMPERATURE CONTROL DEVICE FOR REGULATION OF SPACE TEMPERATURE SHALL BE CAPABLE OF BEING SET FROM 55 TO 85°F AND HAVE THE ABILITY TO PROVIDE A RANGE OF UP TO 5°F BETWEEN FLOOR HEATING AND FLOOR COOLING AND HAVE CAPABILITY OF PROVIDING FLOOR COOLING AT A TEMPERATURE NOT LESS THAN 70°F, AND COOLING AT A TEMPERATURE NOT LESS THAN 78°F.
- APPLIANCES DESIGNED TO BE FIXED IN POSITION SHALL BE FASTENED IN PLACE.
- A MAINTENANCE LABEL SHALL BE AFFIXED TO MECHANICAL EQUIPMENT AND A MAINTENANCE MANUAL SHALL BE PROVIDED FOR THE OWNERS USE.
- PROVIDE ACCESS PANELS FOR ALL CEILING MOUNTED EQUIPMENT & VOLUME DAMPERS.
- PROVIDE MIN. 12'-0" SEPARATION BETWEEN POINT OF PURCHASE AND ANY FRESH AIR INTAKE, OR AIR HANDLING UNIT OSA INTAKE.
- PROVIDE FIRE DAMPER OR SMOKE/ENERGY DAMPER WHERE DUCT PENETRATES FIRE RATED CEILING OR WALL, IF APPLICABLE.
- TRANSFER JOINTS FOR ALL AIR SUPPLY DUCTS INSTALLED WHERE AIR LEAKAGE WOULD BE NON-BENEFICIAL TO THE OCCUPIED AREA, TEMPERATURE REQUIREMENTS SHALL BE SEALED WITH APPROVED MASTIC OR TAPE.
- ALL DUCT SIZES SHOWN ON THE FLOOR PLANS ARE CLEAR INSIDE DIMENSIONS. CONTRACTOR SHALL ENLARGE DUCT SIZE IN ORDER TO ACCOMMODATE LINING INSIDE OF DUCT IF REQUIRED.
- THE MECHANICAL CONTRACTOR SHALL SECURE AND PAY FOR ALL REQUIRED PERMITS AND FEES.
- THE PROJECT SHALL BE AIR BALANCED AND A COPY OF THE FINAL REPORT SHALL BE PRESENTED TO THE TENANT AND OWNER.
- ENERGY CONSERVATION STANDARDS FOR NEW NONRESIDENTIAL BUILDINGS HAVE BEEN REVIEWED AND DESIGN SUBSTANTIALLY CONFORMS TO THEM.
- EACH SINGLE SYSTEM PROVIDING HEATING OR COOLING AIR IN EXCESS OF 2000 CFM SHALL BE EQUIPPED WITH AN AUTOMATIC SHUT-OFF. THE SMOKE DETECTOR SHALL BE INSTALLED IN THE MAIN SUPPLY AIR DUCT DOWNSTREAM OF THE FILTERS OR THEY MAY BE INSTALLED IN EACH ROOM OR SPACE SERVED BY THE SUPPLY AIR DUCT. DETECTORS SHALL ALSO BE INSTALLED IN THE MAIN RETURN DUCT (IF REQ'D). BY THE LOCAL CODE) AHEAD OF OSA INTAKE. SEE AS INDICATED ON PLANS AND LOCAL ADOPTION FOR CODE INTERPRETATION, OR AS INDICATED ON PLANS AND LOCAL ADOPTION FOR CODE INTERPRETATION, OR AS INDICATED ON PLANS AND LOCAL ADOPTION FOR CODE INTERPRETATION, OR AS INDICATED ON PLANS AND LOCAL ADOPTION FOR CODE INTERPRETATION.
- ALL EQUIPMENT AND APPLIANCES ARE LISTED PRODUCTS, AND WILL BE INSTALLED ACCORDING TO THEIR LISTING, AND ALL LISTING INFORMATION WILL BE AVAILABLE FOR INSPECTION.
- DUCTWORK CONSTRUCTION DETAILS:
 - SUPPLY AND RETURN MATERIAL: INSULATED DUCTBOARD (R-6) WITH HEAVY DUTY ALUMINUM TAPE.
 - KITCHEN EXHAUST MATERIAL: MINIMUM 18 GAUGE BLACK STEEL WITH WELDED JOINTS.
 - DISHWASHER EXHAUST MATERIAL: STAINLESS STEEL WITH WELDED JOINTS.
 - KITCHEN WAREWASHER MATERIAL: GALVANIZED STEEL.
 - REFER TO DETAILS OR GUIDELINES FOR MECHANICAL CONSTRUCTION REQUIREMENTS. INSTALL IN FULL ACCORDANCE WITH PROPER CODES AND GUIDELINES.
 - COORDINATE IN THE FIELD THE EXACT LOCATION OF ALL CEILING (MOUNTED) GRILLES AND DIFFUSERS WITH LIGHT FIXTURES AND (MOUNTED) RECESSED BEAMS FROM CEILING.
 - ALL EXTERIOR BRACKETS, COUPLERS, AND HANGERS SHALL BE HOT COLD GALVANIZING COMPOUND.
 - STOP FRAME ALL UNDESIRABLE INTERIOR BRACKETS AND HANGERS.
 - DUCTWORK INSULATION DETAILS:
 - SUPPLY AND RETURN MATERIAL: INSULATED DUCTBOARD (R-6) WITH HEAVY DUTY ALUMINUM TAPE.
 - KITCHEN EXHAUST MATERIAL: ENCLOSED IN TWO HOUR FIRE RATED CHASE TO COMPLY WITH NFPA 96.
 - DISHWASHER EXHAUST MATERIAL: EXTERNAL R5 FIBERGLASS INSULATION WITH VAPOR BARRIER MATERIAL. EXTERNAL R5 FIBERGLASS INSULATION WITH VAPOR BARRIER.
 - KITCHEN WAREWASHER MATERIAL: EXTERNAL R5 FIBERGLASS INSULATION WITH VAPOR BARRIER.



ISSUE
01/29/12 ISSUED FOR PERMIT
02/18/12 ISSUE FOR BID
02/23/12 CITY COMMENTS
03/01/12 REVISION 1

HARRELL
ARCHITECTS, LP
9575 Katy Fwy., #200
Houston, Texas 77024
Tel: 713.222.0711
Fax: 713.222.0722



Holtek & Associates, Inc.
Consulting Engineers - Texas Reg. 15-3443
6671 Southwest Fwy., Suite 650
Houston, Texas 77074 (713) 995-1331
www.holtekengineering.com
Contact: Bob Schmitt (832) 963-0898

PROJECT NAME
Maharaja Bhog

PROJECT ADDRESS
8338 Southwest Freeway
Houston, Texas 77074

PROJECT NUMBER
11078

SHEET NAME
MECHANICAL FLOOR PLAN

SHEET NUMBER
M1.1