

HOOD INFORMATION

HOOD NO.	MODEL	LENGTH	MAX. COOKING TEMP.	EXHAUST PLENUM RISER(S)					SUPPLY PLENUM RISER(S)					HOOD CONSTRUCTION	HOOD CONFIG.		SWITCHES			
				TOTAL EXH. CFM	WIDTH	LENG.	DIA.	CFM	S.P.	TOTAL SUP. CFM	WIDTH	LENG.	DIA.		CFM	S.P.	END TO END	ROW	QUANTITY	LOCATION
1	4824 ND-2-PSP-F	14' 6.00'	600 Deg.	3988	10'	19'		1994	-0.515'		3190					430 SS Where Exposed	ALONE	ALONE	1 FAN 1 LIGHT	FRONT RIGHT FACE
2	5424 ND-2-PSP-F	9' 6.00'	450 Deg.	2138	10'	20'		2138	-0.478'		1710					430 SS Where Exposed	ALONE	ALONE		
3	3624 ND-2	5' 0.00'	450 Deg.	1000	10'	9'		1000	-0.319'		0					430 SS Where Exposed	ALONE	ALONE		BACK RIGHT FACE
4	4224 VHB-G	3' 6.00'	700 Deg.	525	9'	9'		525	-0.068'		0					304 SS 100%	ALONE	ALONE		

HOOD INFORMATION

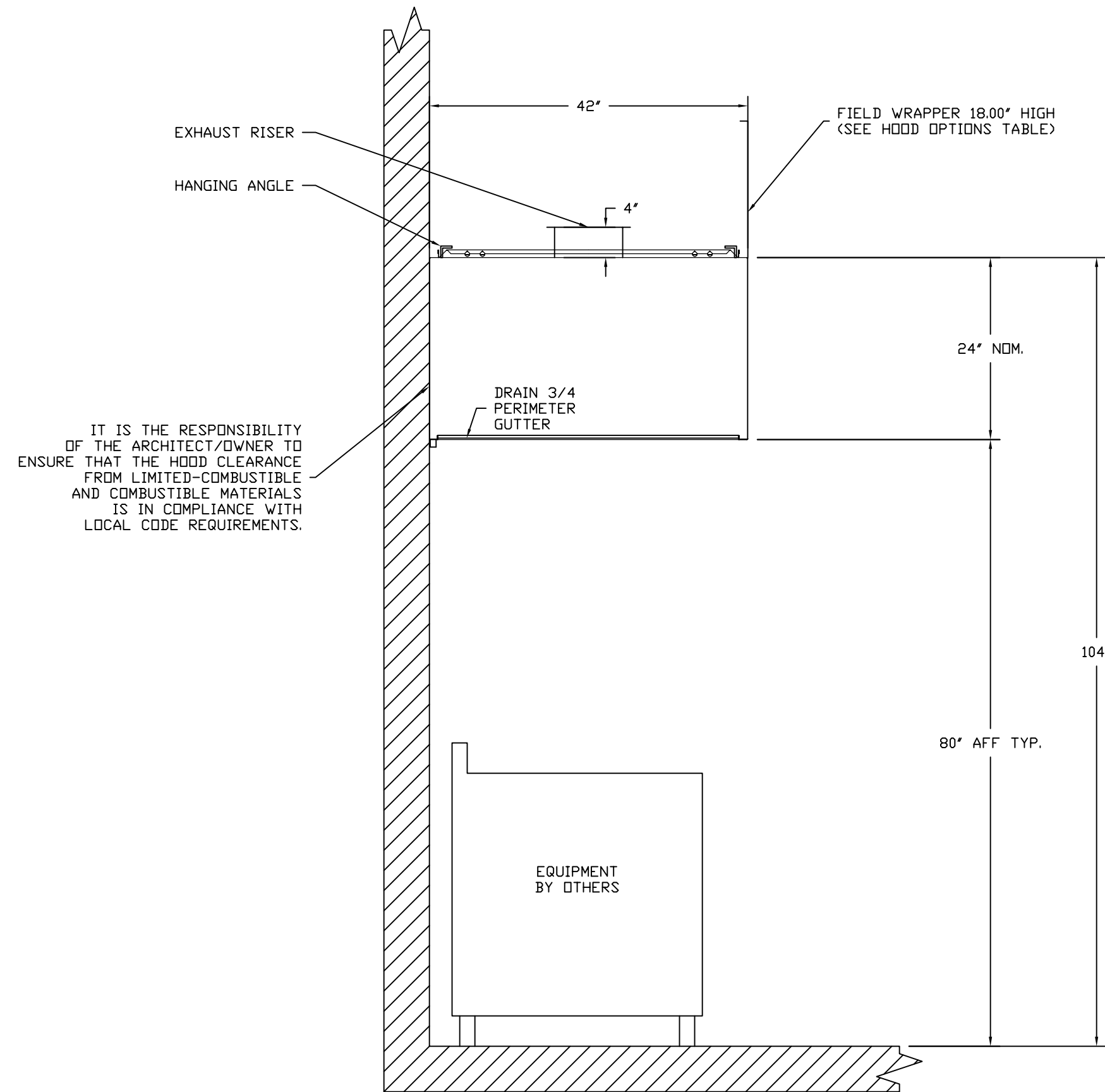
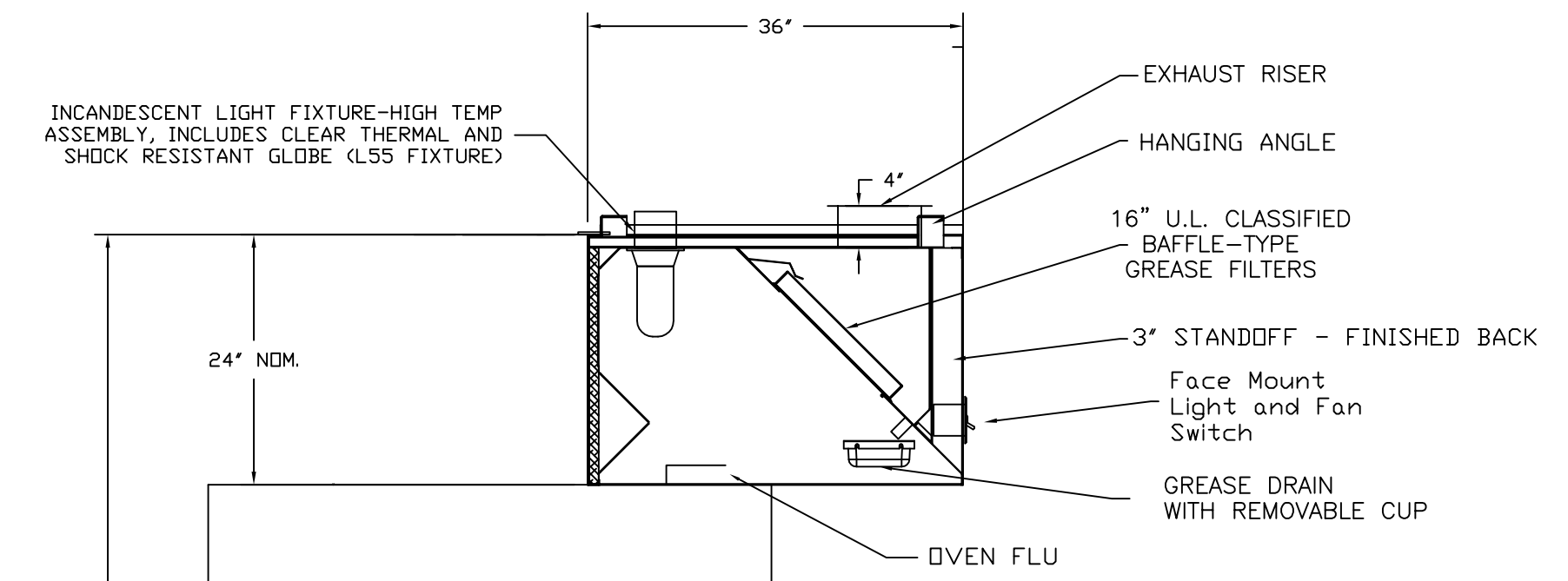
HOOD NO.	FILTER(S)			LIGHT(S)		UTILITY CABINET(S)				FIRE SYSTEM PIPING	HOOD HANGING WGHT				
	TYPE	QTY.	HEIGHT	LENGTH	QTY.	TYPE	WIRE GUARD	LOCATION	FIRE SYSTEM TYPE			SIZE	ELECTRICAL MODEL #	SWITCHES QUANTITY	SWITCHES LOCATION
1	SS Baffle with Handles	2	16"	16"	5	Incandescent Light Fixt	ND					1 Light 1 Fan	Outside	YES	681 LBS
2	SS Baffle with Handles	2	16"	16"	3	Incandescent Light Fixt	ND	Right	Ansul R102	3.0/3.0/3.0	33211002	1 Light 1 Fan		YES	541 LBS
3	SS Baffle with Handles	3	16"	20"	2	Incandescent Light Fixt	ND							YES	265 LBS
4					0									NO	162 LBS

HOOD OPTIONS

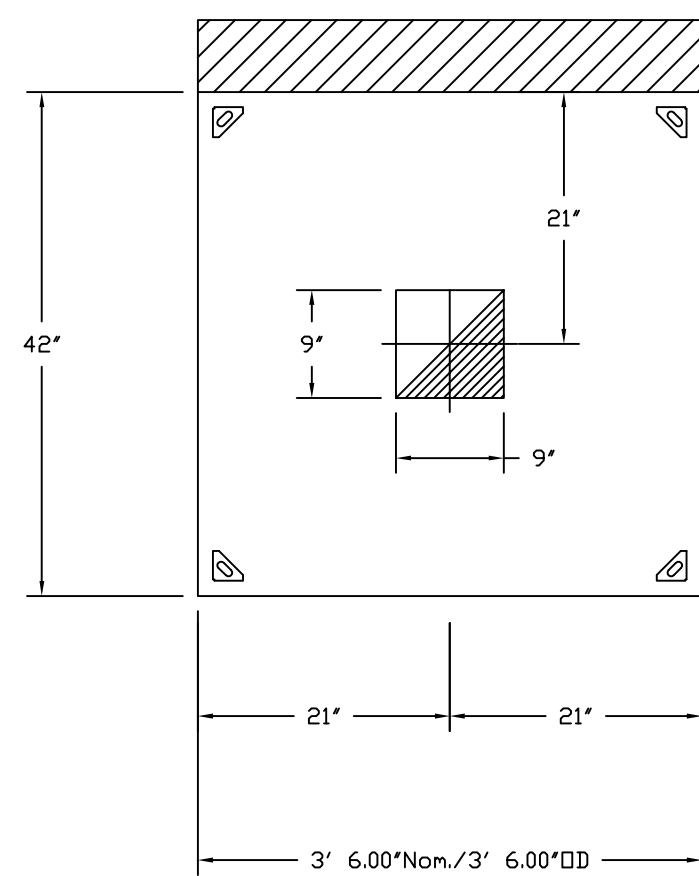
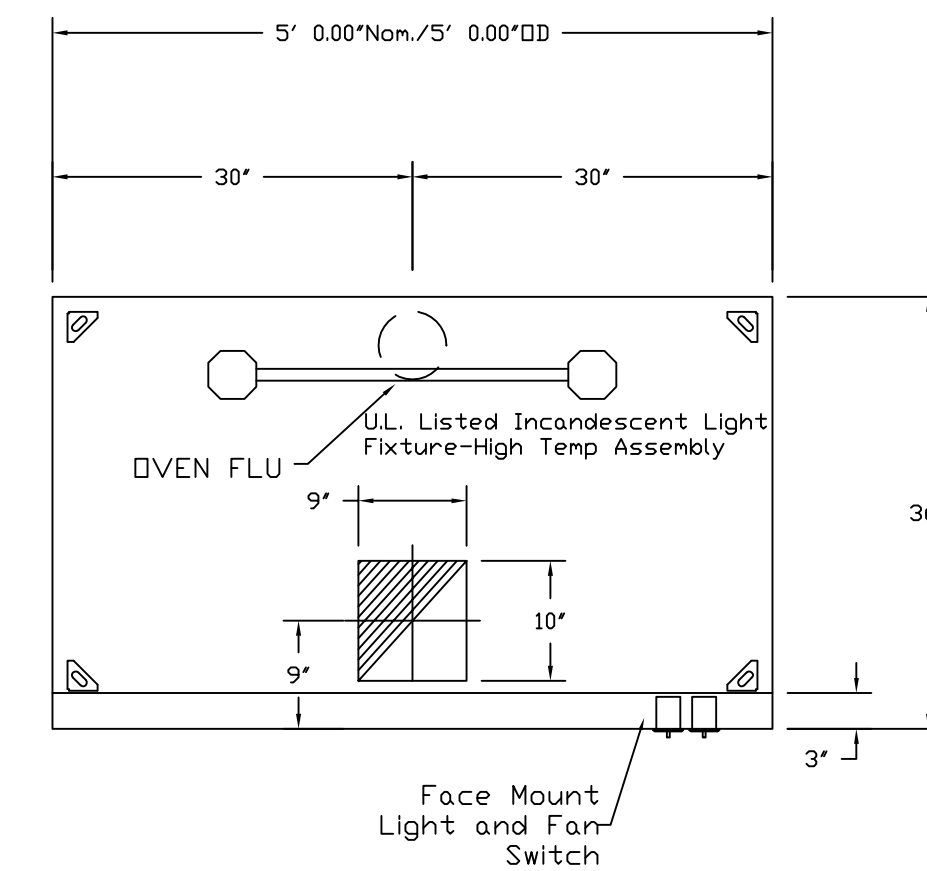
HOOD NO.	OPTION
1	FIELD WRAPPER 18.00' High Front, Left, Right
	BACKSPLASH 80.00' High X 177.00' Long 430 SS
	LEFT SIDESPLASH 80.00' High X 48.00' Long 430 SS
	LEFT END STANDOFF (FINISHED) 3' Wide
2	FIELD WRAPPER 18.00' High Front, Left, Right
	BACKSPLASH 80.00' High X 126.00' Long 430 SS
3	FIELD WRAPPER 18.00' High Front, Left, Right, Back
	BALANCE DAMPERS
	FINISHED BACK - GROND/POLISH 60.00' Long
4	FIELD WRAPPER 18.00' High Front, Left, Right

PERFORATED SUPPLY PLENUM(S)

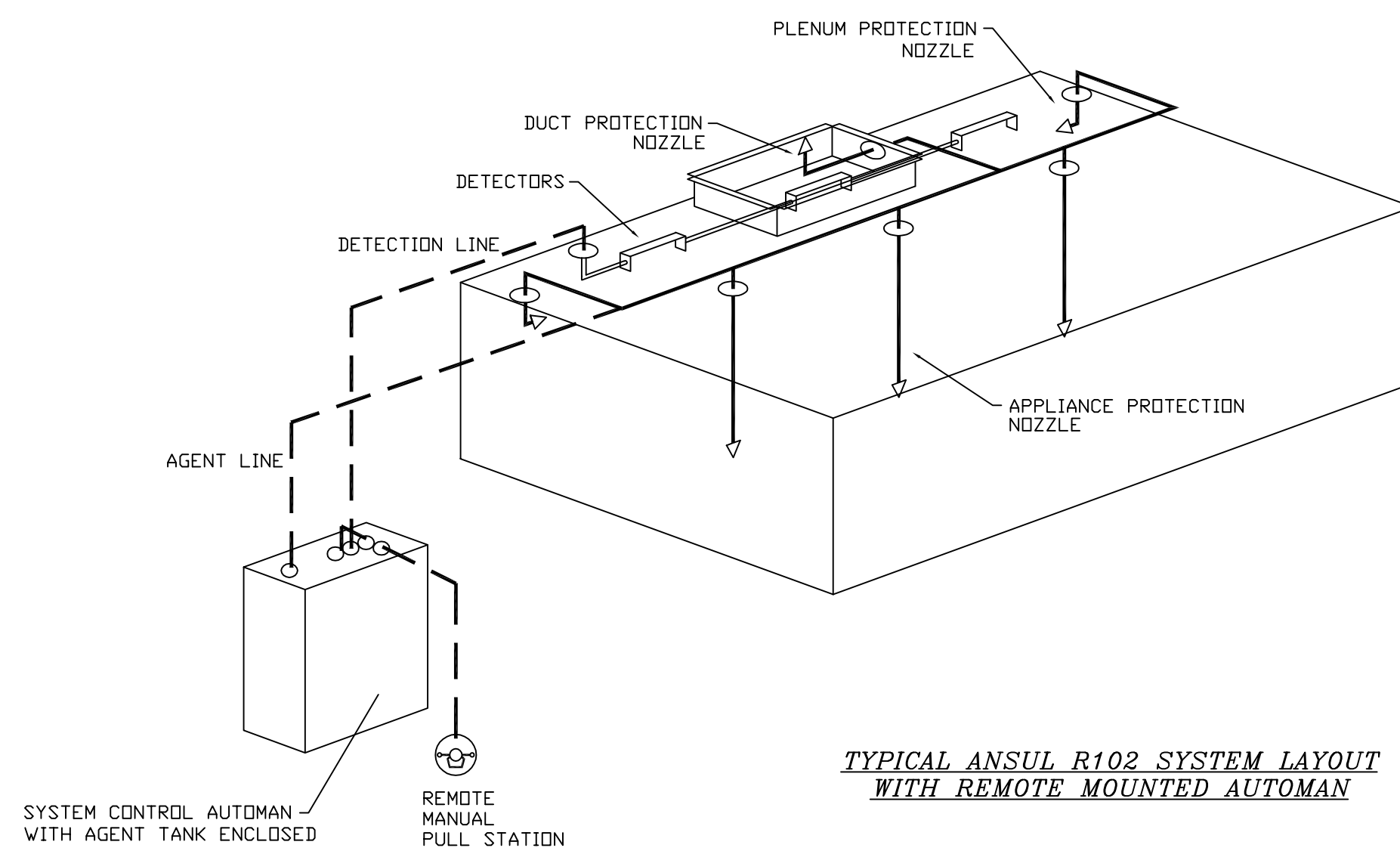
HOOD NO.	POS.	LENGTH	WIDTH	HEIGHT	RISER(S)				
					WIDTH	LENG.	DIA.	CFM	S.P.
1	Front	177'	12'	6'	10'	24'		1063	0.398'
					10'	24'		1063	0.398'
					10'	24'		1063	0.398'
2	Front	126'	12'	6'	10'	20'		855	0.317'
					10'	20'		855	0.317'
					10'	20'		855	0.317'



PLAN VIEW - Hood #3
5' 0.00" LONG 3624ND-2



PLAN VIEW - Hood #4
3' 6.00" LONG 4224VHB-G



Please note - the oven/hood is to be covered by Ansul R-102 Restaurant Fire System.