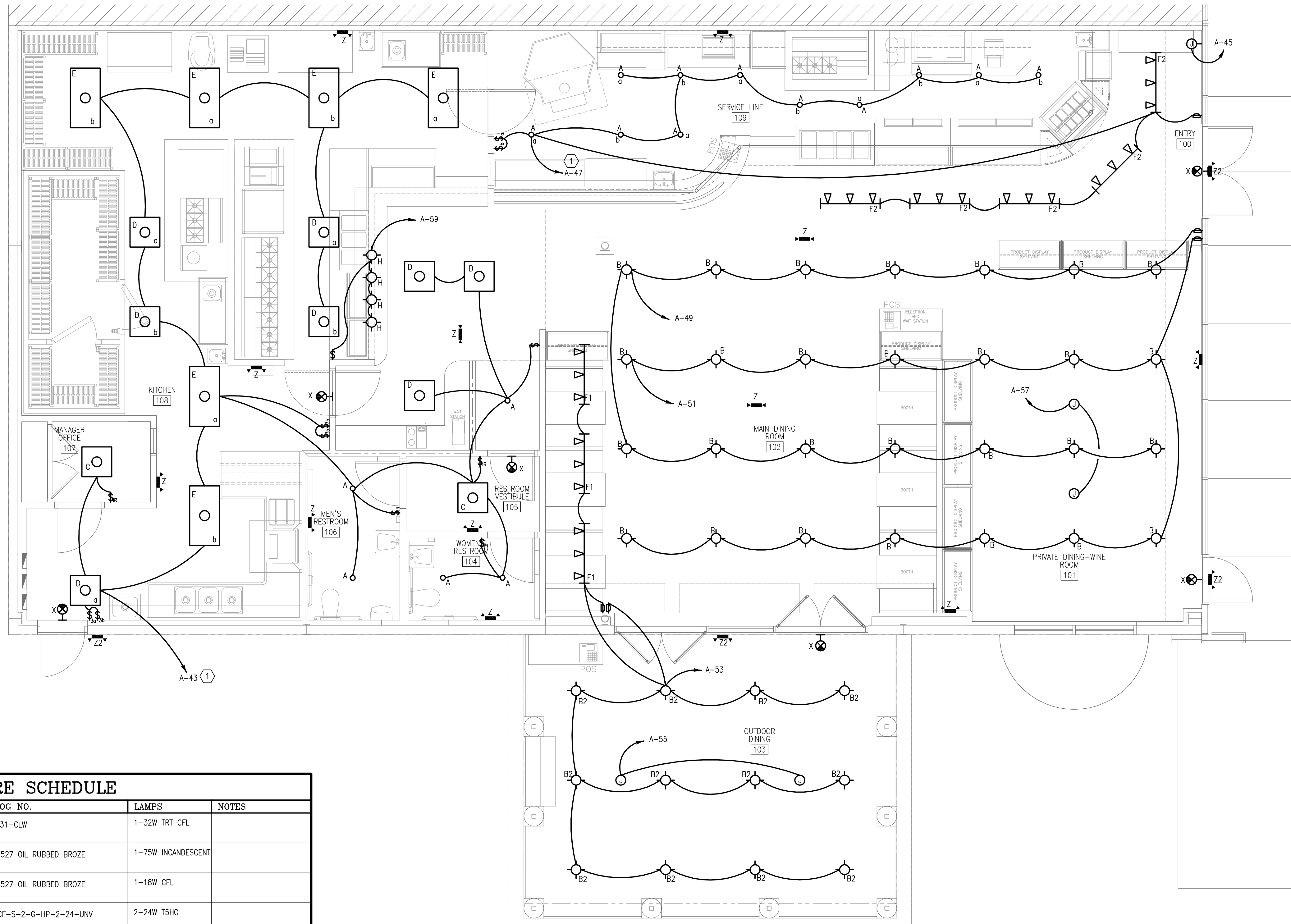


GENERAL NOTES:

G-1 ALL EMERGENCY LIGHTS (E) SHALL BE CONNECTED TO THE UNSWITCHED PHASE CONDUCTOR OF THE CIRCUIT SERVING THE RESPECTIVE AREA.

KEY NOTES:

(1) LOWER CASE INDICATES TO WHICH SWITCH TO CONNECT.



LIGHTING FIXTURE SCHEDULE				
TYPE	DESCRIPTION	MANUFACTURER CATALOG NO.	LAMPS	NOTES
A	6" RECESSED CAN DOWNLIGHT	LIGHTOILER - CALCULITE #8031-CLW	1-32W TRT CFL	
B	PENDANT AREA LIGHT	REJUVINATION-ROSE CITY #A4527 OIL RUBBED BROZE (SHADE-B5344 14" OPAL)	1-75W INCANDESCENT	
B2	PENDANT AREA LIGHT FOR OUTDOOR DINING	REJUVINATION-ROSE CITY #A4527 OIL RUBBED BROZE (SHADE-B5344 14" OPAL)	1-18W CFL	
C	2'X2' DIRECT/INDIRECT RECESSED FLUORESCENT.	LIGHTOILER-COFFAIRE HP # CF-S-2-G-HP-2-24-UNV	2-24W T5HO	
D	2'X2' RECESSED FLUORESCENT	LIGHTOILER-SPECPLUS # SP-S-2-G-FA-VA-2-17-UNV-HI	2-17W TB	
E	2'X4' RECESSED FLUORESCENT	LIGHTOILER-SPECPLUS # SP-S-2-G-FA-VA-3-32-UNV-H3	3-32W TB	
F1	4' - LOW VOLTAGE WALL WASHER TRACK HEAD	LIGHTOILER - ALCYON #22MW6-WH (W/INTEGRAL LENS) LIGHTOILER - LYTESPAN # 6001-N-WH (TRACK SYSTEM)	1-37W MR16	
F2	4' - LOW VOLTAGE SPOT TRACK HEAD	LIGHTOILER - ALCYON #22MC6-WH (W/INTEGRAL LENS-AF2) LIGHTOILER - LYTESPAN # 6001-N-WH (TRACK SYSTEM)	1-37W MR16	
H	FOOD WARMER LAMP.	HATCO #DL-775-S(14)-R (BRICK NICKEL FINISH)	1-250W INCANDESCENT	
X	LED EXIT SIGN	LIGHTOILER - DX SERIES # DX-R-C-W	3.8W LED	
Z	EMERGENCY LIGHT	LIGHTOILER - E2 SERIES # E2-1-36L-H20-W	2-20W MR-16	TYPE 'Z2' TO BE EXTERIOR

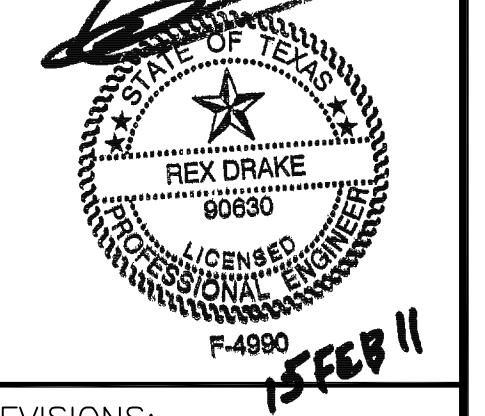
1 FLOOR PLAN-LIGHTING
SCALE: 1/4" = 1'-0"

CISNEROS DESIGN STUDIO, ARCHITECTS LLC
4621 Montrose Blvd. Suite B220 Houston, Texas 77006
(PH) 713-520-7745 (FAX) 713-520-8894
COPYRIGHT 2011
CISNEROS DESIGN STUDIO, ARCHITECTS, LLC
The undersigned hereby certifies that the drawings and specifications are the work of the Architect. They are not to be used on other projects or in any other manner without the written consent of the Architect. The Architect is not responsible for construction means, methods, techniques, sequences or procedures, or for safety precautions and programs in connection with the project.

DAMICO'S RESTAURANT
2802 WHITE OAK, SUITE 500
HOUSTON, TX 77007

ARCHITECT:

ENGINEER:



REVISIONS:

DATE ISSUED: 15 FEB. 2011

SHEET
FLOOR PLAN-LIGHTING

E-2.0

JSE Jordan & Ska Engineers
11231 Richmond Ave., Suite 19104
Houston, TX 77062
V: (281) 617-3200 F: (281) 617-3207
Project Number - 106-0634 Texas Firm Registration # F-4990
Drawn By: JSE Checked By: JSE