

ELECTRICAL NOTES

ELECTRICAL CONTRACTOR:

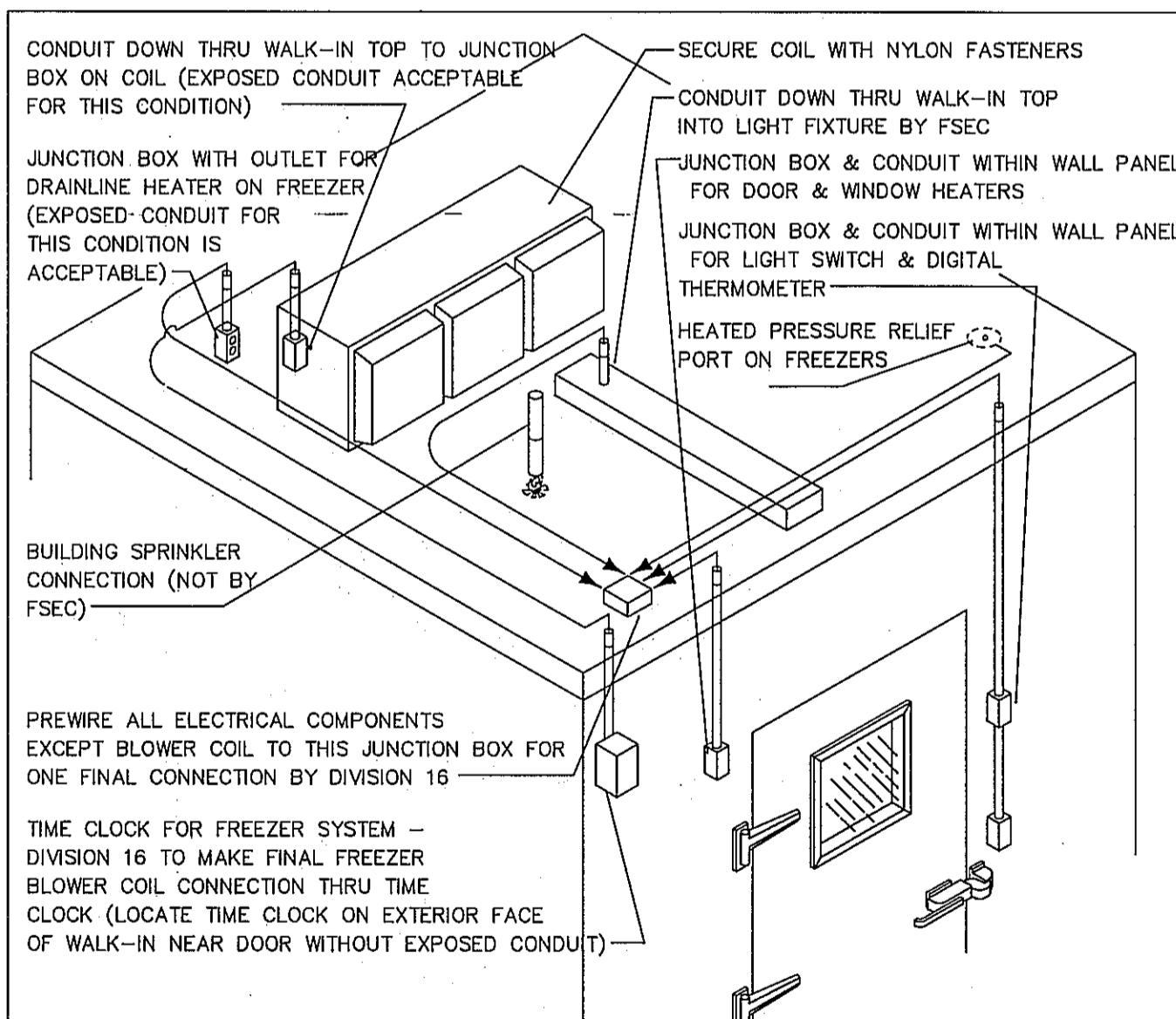
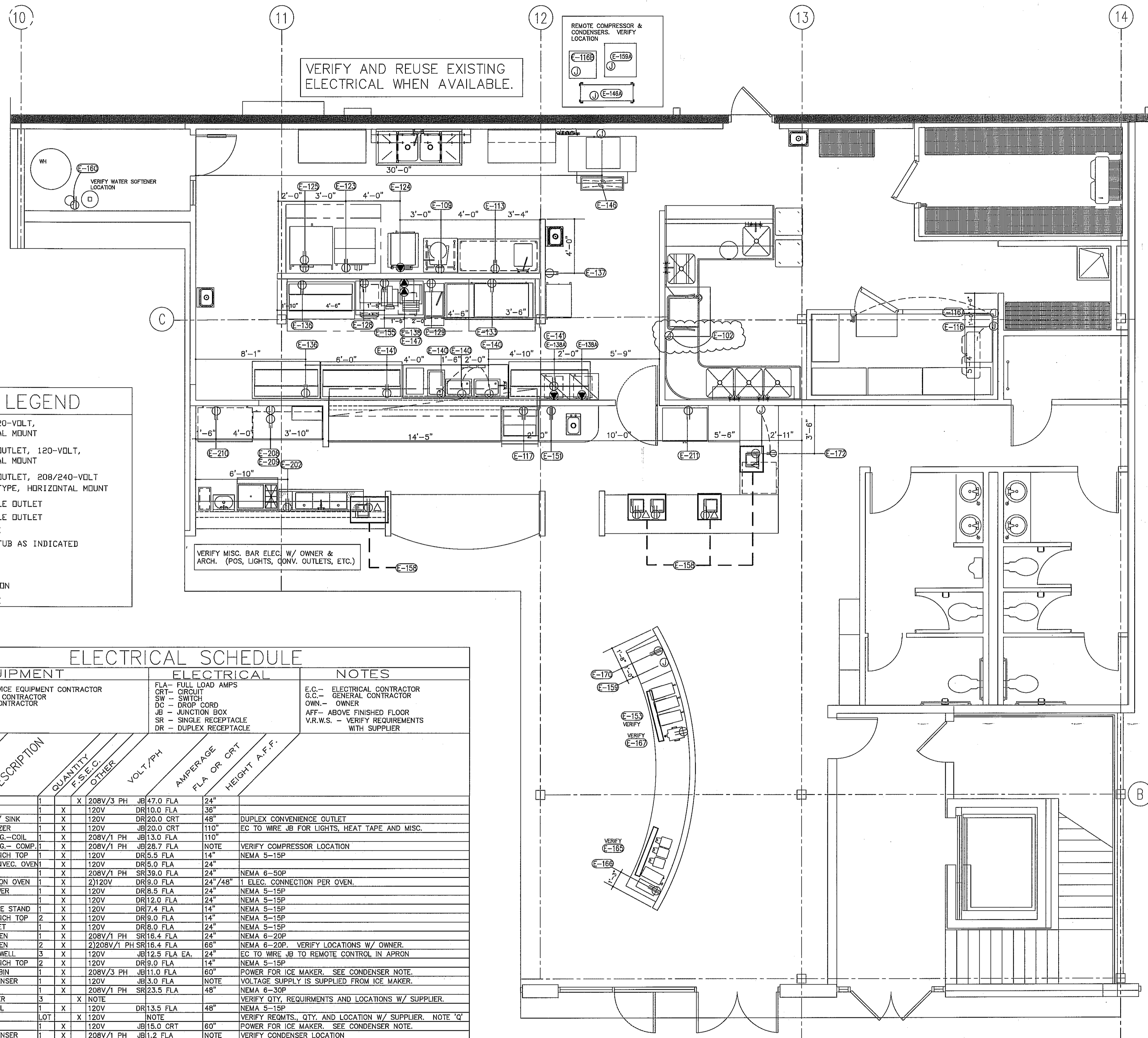
- A: ALL WORK TO BE IN COMPLIANCE WITH PREVAILING CODES.
- B: ELECTRICAL BOXES AND CONDUIT TO BE IN WALLS, SURFACE MOUNTED WORK IS NOT ACCEPTABLE.
- C: E.C. TO PROVIDE AND INSTALL CORD AND PLUG ON ITEMS NOTED.
- D: E.C. TO INCLUDE FINAL HOOKUP OF EQUIPMENT FOR INSTALLATION
- E: ALL ELECTRICAL CONNECTION HEIGHTS ARE TO CENTER LINE OF JUNCTION BOX OR OUTLET, UNLESS NOTED OTHERWISE.
- F: VERIFY WITH OWNER OR VENDOR FOR ANY ADDED ELECTRICAL CONNECTIONS REQUIRED.
- G: ALL ELECTRICAL CONDUIT/FLEX MUST BE FASTENED A MINIMUM OF 6" A.F.F. TO ALLOW FOR FLOOR CLEANING.
- H: MAXIMUM HEIGHT TO TOP OF J-BOX IS TO BE 5 1/2" A.F.F. TYPICAL FOR ALL STUB-UPS AT 4" A.F.F.
- I: ALL 120V DUPLEX RECEPTACLES TO BE A MINIMUM OF 20.0 AMP CIRCUIT.
- J: ALL 120V DUPLEX RECEPTACLES TO BE GF (VERIFY WITH LOCAL ELEC. CODE)
- K: E.C. TO PROVIDE ALL NECESSARY ELECTRICAL DISCONNECT SWITCHES FOR EQUIPMENT; AHEAD OF EQUIPMENT CONTROL OR SWITCH.
- L: E.C. TO PROVIDE EMPTY OCTAGON J-BOX AT 4'-6" AFF FOR MANUAL PULL STATION WITH EMPTY CONDUIT RUNNING TO ABOVE FINISHED CEILING. (CONDUIT IS FOR MANUAL PULL CABLE. VERIFY LOCATION W/ ARCHITECT. CONCEAL BOX AND CONDUIT IN WALL.)
- M: E.C. TO INTERWIRE DISHWASHER WITH CONDENSATE HOOD FAN AND/OR BOOSTER HEATER SO WHEN DISHWASHER IS IN OPERATION, CONDENSATE FAN WILL BE RUNNING.
- N: E.C. TO INTERWIRE DISPOSER, DISPOSER CONTROLS AND SOLENOID VALVE PER MANUFACTURERS SPEC'S.
- O: E.C. TO INTERWIRE WALK-IN COOLERS/FREEZER LIGHTS AND SWITCHES. IN FREEZER UNIT INTERWIRE WITH OUTLET MOUNTED 6" BELOW CEILING FOR EVAPORATOR DRAIN LINE HEAT TAPE, UNLESS OTHERWISE SPECIFIED.
- P: E.C. TO INTERWIRE W/ WALL SWITCHES AT 4'-6" AFF, FOR HOOD LIGHTS AND FAN. SWITCHES BY E.C.. VERIFY SWITCH LOCATION WITH ARCHITECT.
- Q: E.C. TO PROVIDE EMPTY J-BOX AND CONDUIT FOR DATA LINES.
- R: E.C. TO INTERWIRE FIRE PROTECTION SYSTEM WITH BUILDING ALARM SYSTEM.
- S: E.C. TO INTERWIRE MICROSWITCH ON FIRE PROTECTION SYSTEM TO POWER SHUT-OFF DEVICE, SO THE POWER TO ALL EQUIPMENT AND OUTLETS BELOW HOODS WILL BE SHUT-OFF UPON ACTIVATION OF THE FIRE PROT. SYSTEM.

(REV'D 11/26/2007)

ELECTRICAL LEGEND

- DR - DUPLEX RECEPT, 120-VOLT, GROUND TYPE, HORIZONTAL MOUNT
- SR - SPECIAL PURPOSE OUTLET, 120-VOLT, GROUND TYPE, HORIZONTAL MOUNT
- SR - SPECIAL PURPOSE OUTLET, 208/240-VOLT AS INDICATED, GROUND TYPE, HORIZONTAL MOUNT
- FLOOR-SINGLE RECEPTACLE OUTLET
- FLOOR-DUPLEX RECEPTACLE OUTLET
- J-BOX - JUNCTION BOX
- ELECTRICAL CONDUIT, STUB AS INDICATED
- DROP CORD
- WALL SWITCH
- COMPUTER DATA CONNECTION
- FIELD WIRING, PER CODE

VERIFY AND REUSE EXISTING ELECTRICAL WHEN AVAILABLE.



- ### GENERAL NOTES:
- INTERCONNECT CONDUIT AND WIRING FOR ELECTRICAL COMPONENTS INCLUDING LIGHTS, SWITCHES, THERMOMETERS, DOOR, WINDOW, PRESSURE RELIEF PORT HEATERS AND RECEPTACLE FOR DRAINLINE HEATER TO EASILY ACCESSIBLE JUNCTION BOX ON TOP OF WALK-IN.
 - ALL INTERCONNECTING CONDUIT RUN ABOVE WALK-IN PANELS OR WITHIN THE WALL PANELS - EXPOSED CONDUIT INSIDE WALK-IN WILL NOT BE ACCEPTABLE EXCEPT FOR THE CONDITIONS SHOWN AND NOTED IN THE ABOVE ILLUSTRATION
 - SEAL PENETRATIONS THROUGH CEILING, WALLS AND INSIDE ELECTRICAL CONDUIT OUTSIDE AND INSIDE WALK-IN WITH DOW CORNING #999A SILICONE GLAZING SEALANT.
 - PROVIDE HOLES FOR SPRINKLER HEAD AND ELECTRICAL CONDUIT
 - PROVIDE 1/2" OD PVC CONDUIT AT ALL PENETRATIONS THRU INSULATED PANELS.

WALK-IN WIRING

NO SCALE

EQUIPMENT		ELECTRICAL		NOTES		
ITEM #	DESCRIPTION	QUANTITY	F.S.E.C. / OTHER	VOLT / PH	AMPERAGE / FLA OR CRT	HEIGHT A.F.F.
102	DISHWASHER	1	X	208V/3 PH	JB 47.0 FLA	24"
109	FOOD MIXER	1	X	120V	DR 10.0 FLA	36"
113	WORKTABLE W/ SINK	1	X	120V	DR 20.0 CRT	48"
116	WALK-IN FREEZER	1	X	120V	JB 20.0 CRT	110"
116A	FREEZER REFRIG-COIL	1	X	208V/1 PH	JB 13.0 FLA	110"
116B	FREEZER REFRIG-COMP.	1	X	208V/1 PH	JB 28.7 FLA	NOTE
117	REFRIG. SANDWICH TOP	1	X	120V	DR 5.9 FLA	14"
123	RANGE W/ CONVEC. OVEN	1	X	120V	DR 5.0 FLA	24"
124	STEAMER	1	X	208V/1 PH	SR 39.0 FLA	24"
125	DBL. CONVECTION OVEN	1	X	2/120V	DR 9.0 FLA	24"/48"
128	WARMING DRAWER	1	X	120V	DR 8.5 FLA	24"
129	FRYER	1	X	120V	DR 12.0 FLA	24"
133	REFRIG. GRIDDLE STAND	1	X	120V	DR 7.4 FLA	14"
136	REFRIG. SANDWICH TOP	2	X	120V	DR 9.0 FLA	14"
137	HEATED CABINET	1	X	120V	DR 8.0 FLA	24"
138	MICROWAVE OVEN	1	X	208V/1 PH	SR 16.4 FLA	24"
138A	MICROWAVE OVEN	2	X	2/208V/1 PH	SR 16.4 FLA	66"
140	DROP-IN HOT WELL	3	X	120V	JB 12.5 FLA EA.	24"
141	REFRIG. SANDWICH TOP	2	X	120V	DR 9.0 FLA	14"
148	ICE MAKER & BIN	1	X	208V/3 PH	JB 11.0 FLA	60"
148A	REFRIG. CONDENSER	1	X	120V	JB 3.0 FLA	NOTE
147	TOASTER	1	X	208V/1 PH	SR 23.5 FLA	48"
153	ICE TEA BREWER	3	X	NOTE		
155	SANDWICH GRILL	1	X	120V	DR 13.5 FLA	48"
158	POS UNITS	LOT	X	120V	NOTE	
159	ICE MAKER	1	X	120V	JB 15.0 CRT	60"
159A	REMOTE CONDENSER	1	X	208V/1 PH	JB 1.2 FLA	NOTE
160	WATER SOFTENER	1	X	120V	DR	24"
165	COFFEE BREWER/DISP.	1	X	NOTE		
166	COFFEE GRINDER	1	X	120V	DR NOTE	48"
167	COFFEE DISP./HEAT STAND	1	X	120V	DR NOTE	48"
170	SODA DISPENSER	1	X	120V	DR 5.0 FLA	48"
172	U.C. REFRIGERATOR	1	X	120V	JB 3.9 FLA	14"
202	FRONT BAR	1	X	120V	DR 20.0 CRT	14"
208	REFRIG. BACKBAR CAB.	1	X	120V	DR 4.0 FLA	14"
209	BACKBAR COUNTER	1	X	120V	DR 20.0 CRT	54"
210	U.C. REFRIGERATOR	1	X	120V	DR 5.0 FLA	24"
211	REFRIGERATOR	1	X	120V	DR 9.8 FLA	36"

Food Service Equipment
 640 WEST 6TH STREET
 HOUSTON, TX 77007
 PHONE: 713-861-4455

This drawing, being an instrument of service, is and remains the property of Strategic Equipment. It is a design drawing not intended to replace required architectural or engineering plans, is not to be reused for another project without our consent and is subject to return on demand.

CAFE EXPRESS
 HOUSTON, TEXAS
 FOODSERVICE ELECTRICAL PLAN

NO.	DATE	DESCRIPTION	CLM	REVISED	COOKLINE	CLM	REVISED	CLM	REVISED	CLM	REVISED	DISHWASHER
1	10.19.11		CLM	REVISED		CLM	REVISED		CLM	REVISED		CLM
2	10.21.11		CLM	REVISED		CLM	REVISED		CLM	REVISED		CLM
3	10.25.11		CLM	REVISED		CLM	REVISED		CLM	REVISED		CLM
4	11.3.11		CLM	REVISED		CLM	REVISED		CLM	REVISED		CLM

SCALE: 1/4"=1'-0"
 DRAWN BY: CLM
 CHECKED BY:
 DATE DRAWN: 6/24/11
 PROJECT NO. 11L0CAFEEX

FS-3
 SHEET NUMBER