

(EXISTING)

PANEL 'L1' 120/208V, 3φ, 4W MOUNTING: SURFACE NEMA-1 10K ISCA

LOCATION: ELECT. 004 100 AMP MCB

CKT	LOAD	#	KVA	WIRE	BKR	BKR	WIRE	KVA	#	LOAD	CKT
1	CONVECTION OVEN	1,3	1.0	#12	20/1	20/1	#12	0.9	1,3	REFRIG. GRIDDLE STAND	2
3	SHUNT TRIP	2	-	-	ST	ST	-	-	2	SHUNT TRIP	4
5	CONVECTION OVEN	1,3	1.0	#12	20/1	20/1	-	-	4	SPARE	6
7	SHUNT TRIP	2	-	-	ST	20/1	-	-	4	SPARE	8
9	RANGE/OVEN	1,3	0.6	#12	20/1	20/1	-	-	4	SPARE	10
11	SHUNT TRIP	2	-	-	ST	15/3	-	-	4	SPARE	12
13	TOASTER	1,3	4.7	#10	30/2	-	-	-	-	-	14
15	-	-	-	-	-	-	-	-	-	-	16
17	SHUNT TRIP	2	-	-	ST	20/1	-	-	4	SPARE	18
19	WARMING DRAWER	1,3	1.0	#12	20/1	20/1	-	-	4	SPARE	20
21	SHUNT TRIP	2	-	-	ST	20/1	-	-	4	SPARE	22
23	SANDWICH GRILL	1,3	1.6	#12	20/1	20/1	-	-	4	SPARE	24
25	SHUNT TRIP	2	-	-	ST	20/1	-	-	4	SPARE	26
27	FRYER	1,3	1.4	#12	20/1	20/1	-	-	4	SPARE	28
29	SHUNT TRIP	2	-	-	ST	20/1	-	-	4	SPARE	30
31	MICROWAVE	1,3	3.2	#12	20/2	20/1	-	-	4	SPARE	32
33	-	-	-	-	-	20/1	-	-	4	SPARE	34
35	SHUNT TRIP	2	-	-	ST	20/1	-	-	4	SPARE	36
37	STEAMER	1,3	8.0	#8	50/2	20/1	-	-	4	SPARE	38
39	-	-	-	-	-	20/1	-	-	4	SPARE	40
41	SPARE	4	-	-	EX	20/1	-	-	-	-	42

KITCHEN <23.4> X .65% = 15.2 KVA
TOTAL KVA = 15.2 @ 208V, 3φ = 42.2 AMPS

- * NOTES
1. REMOVE EXISTING 20A/1P CIRCUIT BREAKER AND PROVIDE NEW SIZE AS INDICATED.
 2. REMOVE EXISTING CIRCUIT BREAKER TO PROVIDE ROOM FOR SHUNT TRIP BREAKER ABOVE.
 3. PROVIDE SHUNT TRIP TYPE CIRCUIT BREAKER.
 4. FIELD VERIFY IF EXISTING LOAD IS REQUIRED TO REMAIN, IF NOT CIRCUIT TO BECOME SPARE.

(EXISTING)

PANEL 'L2' 120/208V, 3φ, 4W MOUNTING: SURFACE NEMA-1 10K ISCA

LOCATION: ELECT. 004 350 AMP MCB

CKT	LOAD	#	KVA	WIRE	BKR	BKR	WIRE	KVA	#	LOAD	CKT
1	DINING LIGHTING	1,2	1.1	#12	20/1	20/1	#12	0.8	1	EXTERIOR CEILING FANS	2
3	DINING LIGHTING	1,3	0.9	#12	20/1	20/1	#12	0.9	1	RECEPTACLES	4
5	DINING COVE LIGHTING	1,4	0.6	#12	20/1	20/1	#12	0.7	1	RECEPTACLES	6
7	DINING LIGHTING	1,5	0.8	#12	20/1	20/1	#12	1.0	1	P.O.S. (2)	8
9	TRACK LIGHTING	1,6	0.6	#12	20/1	20/1	#12	1.0	1	P.O.S. (2)	10
11	ORDER AREA LIGHTING	1,7	0.9	#12	20/1	20/1	#12	0.5	1	P.O.S. (1)	12
13	PRIVATE DINING LIGHTING	1,8	0.4	#12	20/1	20/1	#12	0.5	1	TWH-1 & TWH-2	14
15	OUTDOOR LIGHTING	1,9	0.9	#12	20/1	20/1	#12	0.5	1	WATER SOFTNER	16
17	TENANT SIGNAGE (3)	1,10	1.5	#12	20/1	20/1	#12	0.5	1	COMPUTER	18
19	SPARE	11	-	-	20/1	20/1	#12	1.0	1	MISC. EQUIPMENT	20
21	SPARE	11	-	-	20/1	20/2	#10	5.9	12	FREEZER COMPRESSOR	22
23	KITCHEN LIGHTING	1	1.6	#12	20/1	20/1	-	-	12	-	24
25	SPARE	11	-	-	20/1	20/2	#12	0.3	12	CONDENSER	26
27	SPARE	11	-	-	20/1	-	-	-	12	-	28
29	SPARE	11	-	-	20/1	60/3	#6	16.9	12	DISHWASHER	30
31	SPARE	11	-	-	20/3	-	-	-	12	-	32
33	-	-	-	-	-	-	-	-	-	-	34
35	-	-	-	-	-	-	-	-	-	-	36
37	SPARE	11	-	-	25/1	20/1	-	-	11	SPARE	38
39	SPARE	11	-	-	30/2	30/2	-	-	11	SPARE	40
41	-	-	-	-	-	-	-	-	-	-	42

KITCHEN <19.8> X .65% = 12.8 KVA
CONTINUOUS = 83.2 X 100% = 83.2 KVA
TOTAL KVA = 96 @ 208V, 3φ = 266.6 AMPS

- * NOTES
1. NEW LOAD CONNECTED TO EXISTING CIRCUIT BREAKER.
 2. VIA RELAY 'R1' IN LEVITON 'Z-MAX' RELAY PANEL. (TIMELOCK ON/OFF)
 3. VIA RELAY 'R2' IN LEVITON 'Z-MAX' RELAY PANEL. (TIMELOCK ON/OFF)
 4. VIA RELAY 'R3' IN LEVITON 'Z-MAX' RELAY PANEL. (TIMELOCK ON/OFF)
 5. VIA RELAY 'R4' IN LEVITON 'Z-MAX' RELAY PANEL. (TIMELOCK ON/OFF)
 6. VIA RELAY 'R5' IN LEVITON 'Z-MAX' RELAY PANEL. (TIMELOCK ON/OFF)
 7. VIA RELAY 'R6' IN LEVITON 'Z-MAX' RELAY PANEL. (TIMELOCK ON/OFF)
 8. VIA RELAY 'R7' IN LEVITON 'Z-MAX' RELAY PANEL. (TIMELOCK ON/OFF)
 9. VIA RELAY 'R8' IN LEVITON 'Z-MAX' RELAY PANEL. (TIMELOCK ON/OFF)
 10. VIA RELAY 'R9' IN LEVITON 'Z-MAX' RELAY PANEL. (PHOTOCELL ON/OFF)
 11. FIELD VERIFY IF EXISTING LOAD IS REQUIRED TO REMAIN, IF NOT CIRCUIT TO BECOME SPARE.
 12. REMOVE EXISTING CIRCUIT BREAKER TO PROVIDE ROOM FOR SHUNT TRIP BREAKER ABOVE.

(EXISTING)

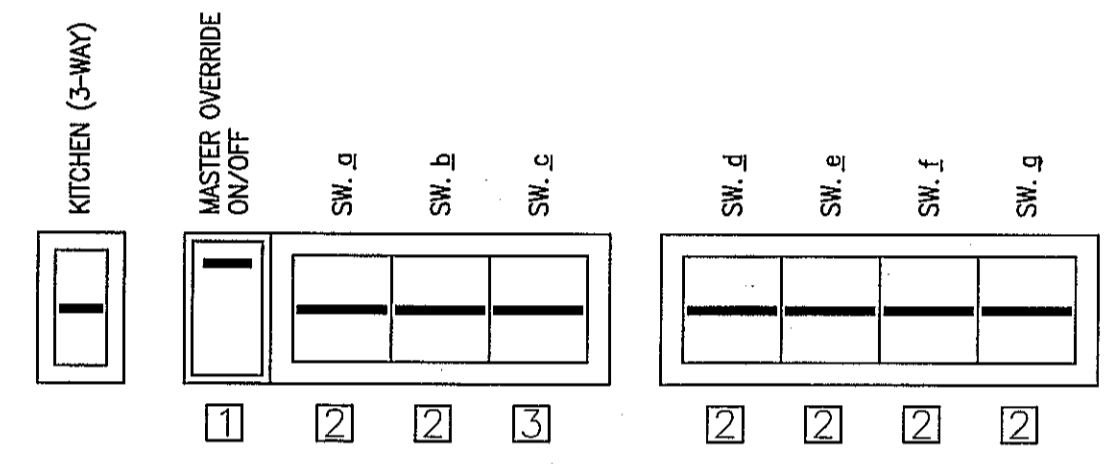
DIST. PANEL 'MDP' 120/208V, 3φ, 4W MOUNTING: SURFACE NEMA-1 65K A.I.C.

LOCATION: ELECT. 004 600 AMP MCB

CKT	LOAD	#	DEVICE TYPE	KVA	AMPS/POLES	FEEDER SIZE & CONDUIT
1	NEW #MH-3	1	NEW C.B.	17.7	50A/3P	3/8, 1#10 GND., 1 1/4" C.
2	NEW #ACU-3	1	NEW C.B.	14.6	60A/3P	3/8, 1#10 GND., 1 1/4" C.
3	SPACE	-	-	-	-	-
4	SPACE	-	-	-	-	-
5	SPACE	-	-	-	-	-
6	SPACE	-	-	-	-	-
7	SPACE	-	-	-	-	-
8	EXISTING LOAD	3	C.B.	29.3	125A/3P	-
9	EXISTING LOAD	3	C.B.	-	100A/3P	-
10	EXISTING LOAD	3	C.B.	-	100A/3P	-
11	EXISTING LOAD	3	C.B.	3.9	30A/3P	-
12	EXISTING LOAD	3	C.B.	23.4	100A/3P	-
13	EXISTING PANEL L2	2	C.B.	96.0	400A/3P	-
14	EXISTING LOAD	3	C.B.	29.3	125A/3P	-

TOTAL KVA = 214.1 @ 208V, 3φ = 594.7 AMPS

- * NOTES
1. EXISTING SPACE PROVIDE NEW CIRCUIT BREAKER SIZE AS INDICATED.
 2. EXISTING LOAD TO REMAIN.
 3. FIELD VERIFY IF EXISTING LOAD IS REQUIRED TO REMAIN, IF NOT CIRCUIT BREAKER TO BECOME SPARE.



3 SWITCH BANK DETAIL
SCALE: NONE

KEYED NOTES:

- 1 "LEVITON" #00LV5-01W LOW-VOLTAGE 1-BUTTON MASTER OVERRIDE SWITCH.
- 2 "LEVITON" #MN110-11W INCANDESCENT "MONET" SLIDE DIMMER.
- 3 "LEVITON" #MNX10-11W FLUORESCENT "MONET" SLIDE DIMMER.

(EXISTING)

PANEL 'L3' 120/208V, 3φ, 4W MOUNTING: SURFACE NEMA-1 10K ISCA

LOCATION: ELECT. 004 350 AMP MLO

CKT	LOAD	#	KVA	WIRE	BKR	BKR	WIRE	KVA	#	LOAD	CKT
1	REFRIG. SANDWICH TOP	1	1.0	#12	20/1	20/1	#12	1.0	1	REFRIG. SANDWICH TOP	2
3	MICROWAVE	2	3.4	#12	20/2	60/2	-	-	6	SPARE	4
5	-	-	-	-	-	-	-	-	-	-	6
7	REFRIG. SANDWICH TOP	1	1.0	#12	20/1	20/1	#12	1.0	1	REFRIG. SANDWICH TOP	8
9	HEATED CABINET	1	0.9	#12	20/1	20/3	#12	5.0	2	ICE MAKER/BN	10
11	FOOD MIXER	1	1.2	#12	20/1	-	-	-	-	-	12
13	MISC. RECEPTACLES	1	0.5	#12	20/1	-	-	-	-	-	14
15	REFRIG. SANDWICH TOP	1	0.6	#12	20/1	20/1	#12	0.6	1	SODA DISPENSER	16
17	REFRIGERATOR	1	1.1	#12	20/1	20/1	#12	1.2	1	ICE MAKER	18
19	REFRIGERATOR	1	1.1	#12	20/1	20/2	#12	2.7	2	FREEZER REFRIG COIL	20
21	DROP-IN HOT WELL	1	1.4	#12	20/1	-	-	-	2	-	22
23	DROP-IN HOT WELL	1	1.4	#12	20/1	20/1	-	-	4	SPARE	24
25	DROP-IN HOT WELL	1	1.4	#12	20/1	15/3	-	-	4	SPARE	26
27	MISC. RECEPTACLES	1	1.0	#12	20/1	-	-	-	-	-	28
29	REFRIG. RACK BAR	1	0.5	#12	20/1	-	-	-	-	-	30
31	L/C REFRIG.	1	0.4	#12	20/1	20/2	#12	3.4	2	MICROWAVE	32
33	MISC. RECEPTACLES	1	0.5	#12	20/1	-	-	-	-	-	34
35	ICE TEA BREWER (3)	1	1.5	#12	20/1	20/1	#12	0.6	2	FREEZER DOOR HIRVALSPRESS PART	36
37	COFFEE DISP./HEAT STAND	1	1.2	#12	20/1	100/3	EX	15.2	3	EXISTING PANEL L1	38
39	COFFEE BREWER/DISP.	1	1.2	#12	20/1	-	-	-	-	-	40
41	COFFEE GRINDER	1	1.2	#12	20/1	-	-	-	-	-	42

TOTAL KVA = (SEE SECTION-2)

- * NOTES
1. NEW LOAD CONNECTED TO EXISTING CIRCUIT BREAKER.
 2. REMOVE EXISTING CIRCUIT BREAKER AND PROVIDE NEW SIZE AS INDICATED.
 3. EXISTING LOAD TO REMAIN.
 4. FIELD VERIFY IF EXISTING LOAD IS REQUIRED TO REMAIN, IF NOT CIRCUIT TO BECOME SPARE.
 5. GFCI CIRCUIT BREAKER.
 6. EXISTING LOAD TO BE REMOVED.

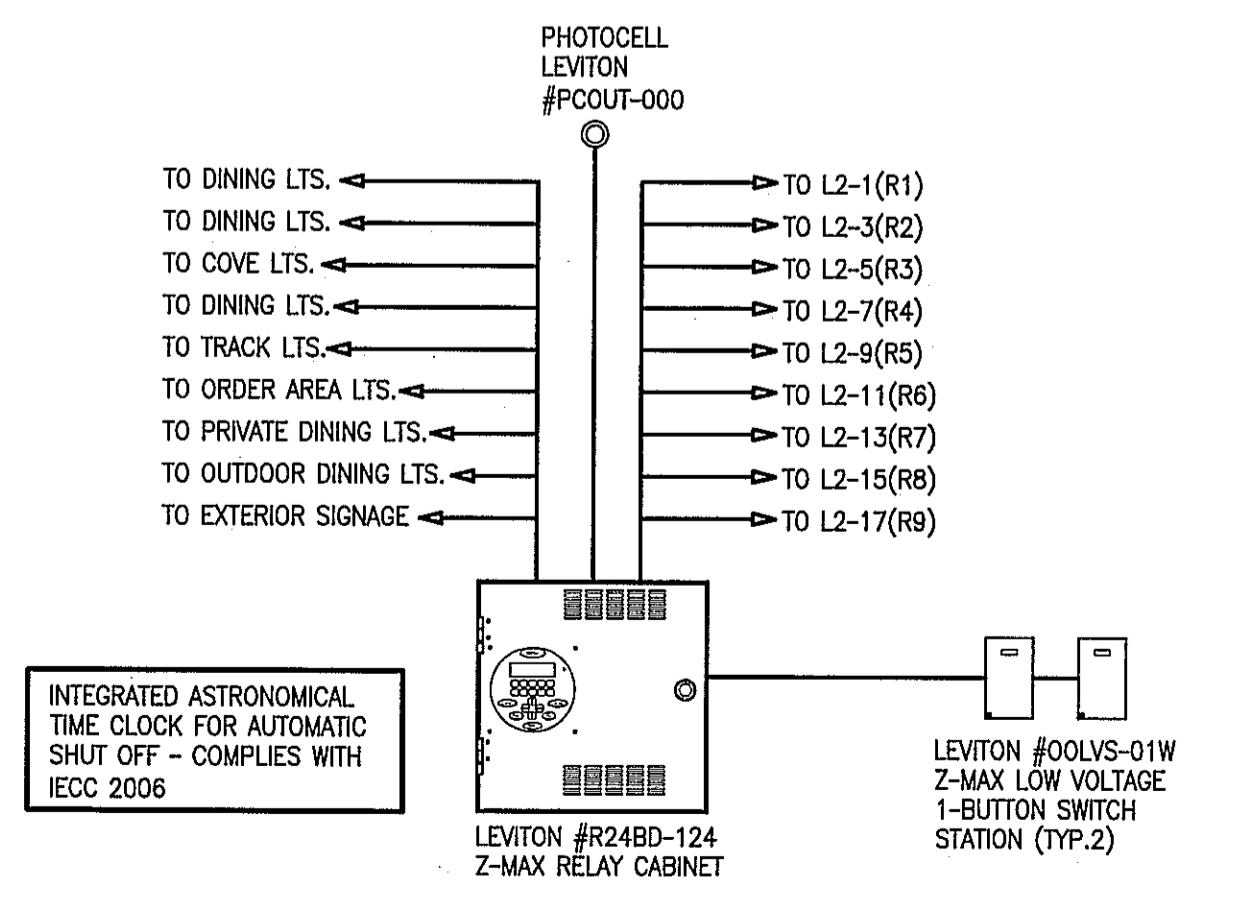
(EXISTING)

RELAY PANEL 'R' LEVITON LIGHTING CONTROL RELAY CABINET 'LEVITON' Z-MAX #R24BD-124

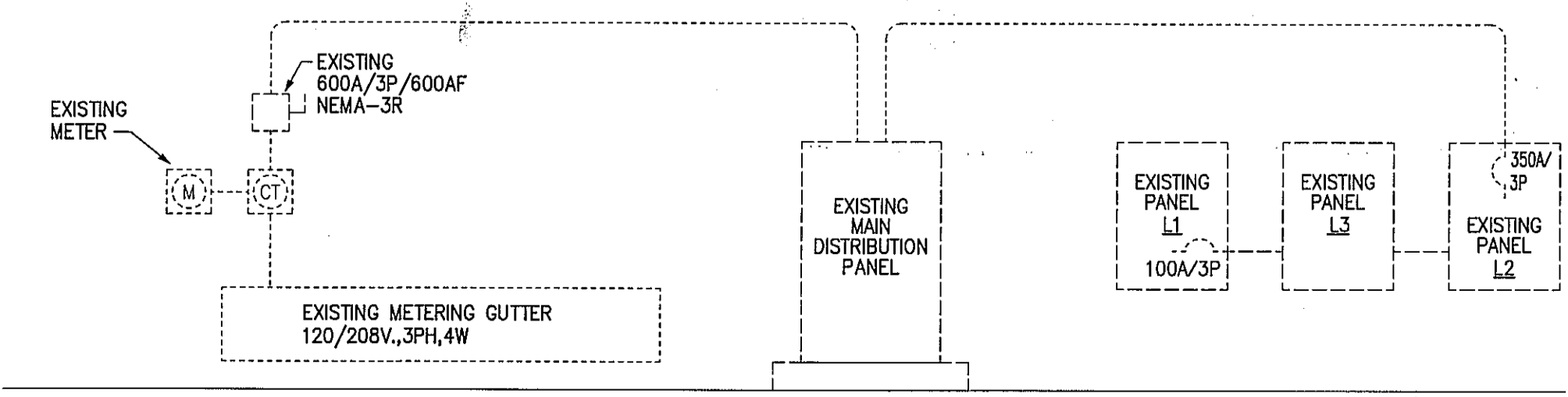
LOCATION: ELECT. 004

ITEM	RELAY	LOAD CONTROLLED	FIXTURE TYPE	VOLTAGE	LOAD	TYPE
RELAY CARD 1	1	DINING ROOM LIGHTING	LOW-VOLTAGE	120V	1,100 W/VA	1
RELAY CARD 2	2	DINING ROOM LIGHTING	LOW-VOLTAGE	120V	900 W/VA	1
RELAY CARD 3	3	DINING COVE LIGHTING	FLUORESCENT	120V	1,500 W/VA	1
RELAY CARD 4	4	DINING ROOM LIGHTING	FLUORESCENT	120V	800 W/VA	1
RELAY CARD 5	5	TRACK LIGHTING	LED	120V	600 W/VA	1
RELAY CARD 6	6	ORDER AREA LIGHTING	LOW-VOLTAGE	120V	900 W/VA	1
RELAY CARD 7	7	PRIVATE DINING LIGHTING	FLUORESCENT/INCANDESCENT	120V	400 W/VA	1
RELAY CARD 8	8	OUTDOOR DINING LIGHTING	HALOGEN	120V	900 W/VA	1
RELAY CARD 9	9	EXTERIOR SIGNAGE	LED	120V	1,500 W/VA	1
RELAY CARD 10-24	SPARE	-	-	-	-	-

RELAY TYPE
1 - RELAY-001-STD (Z-MAX RELAY CARD, 20A UP TO 277V)
2 - RELAY-002-2PL (Z-MAX RELAY CARD, 20A/2P UP TO 480V)



2 Z-MAX STAND-ALONE RELAY SYSTEM
SCALE: NONE



1 ELECTRICAL RISER DIAGRAM
SCALE: NONE

ALL EXTERIOR EQUIPMENT TO BE IN NEMA-3R ENCLOSURES.
ALL EXTERIOR EQUIPMENT SHALL BE PAINTED TO MATCH EXISTING EXTERIOR COLOR.

HARRELL ARCHITECTS, LP

9575 Katy Frwy., #200
Houston, Texas 77024
tel: 713.722.7077
fax: 713.722.7072

CONSULTANTS
Holste & Associates, Inc.
Consulting Engineers - Texas Reg. #543
6671 Southwest Freeway, Suite 850
Houston, Texas 77074 (713) 995-1551
www.holsteinc.com
Contact: Kris Odum (832) 643-0368

PROJECT NAME
Cafe Express Restaurant

PROJECT ADDRESS
3800 SW. Freeway, Suite 124
Houston, Texas 77027

PROJECT NUMBER
11039

SHEET NAME
ELECTRICAL RISER DIAGRAM

SHEET NUMBER