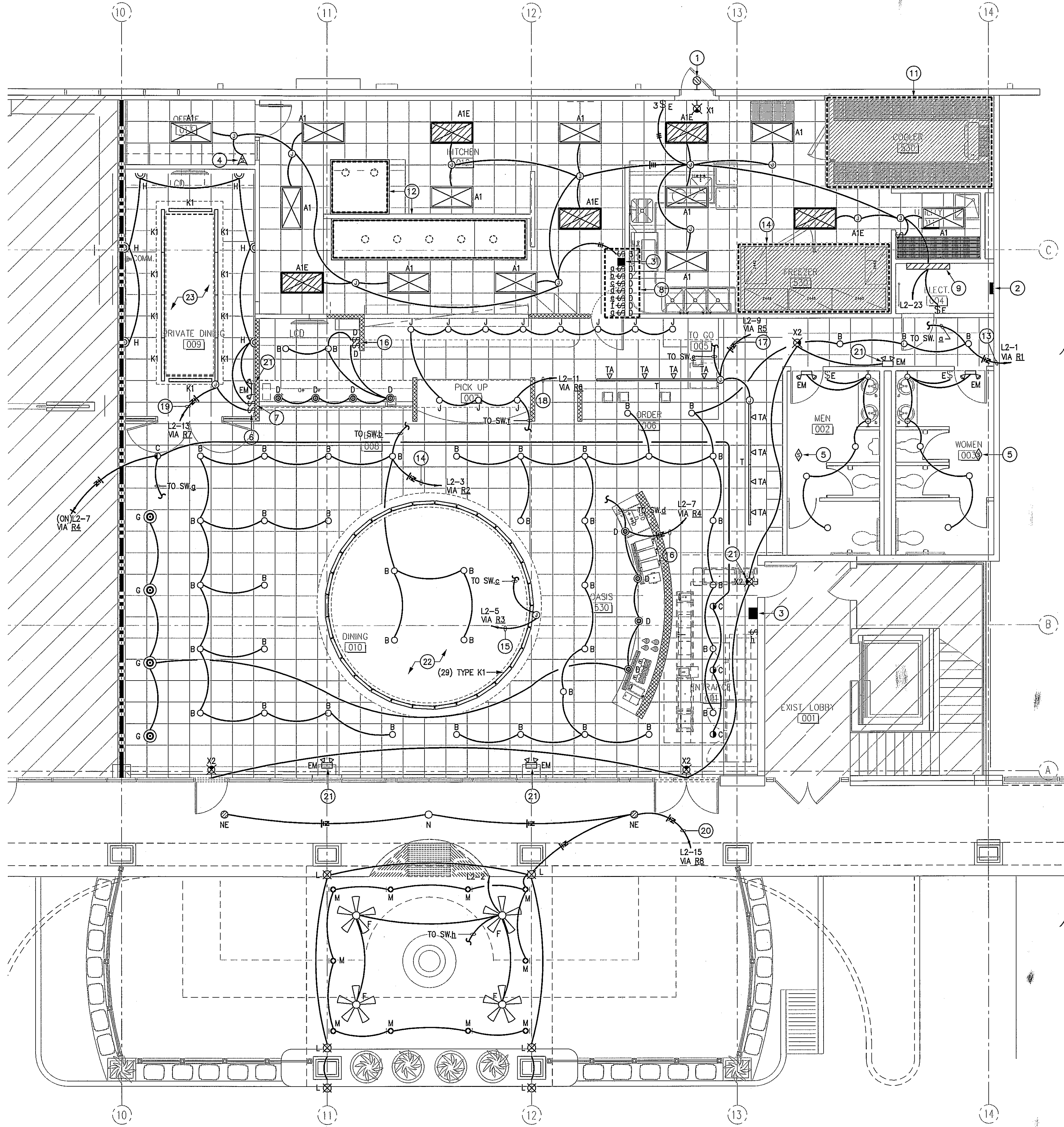


ISSUE
10-24-11 LANDLORD REVIEW
11-03-11 ISSUED FOR PERMIT AND PRICING



ELECTRICAL GENERAL NOTES:
(FOR SHEET E1.1)

1. REFER TO ARCHITECT/OWNER DRAWINGS FOR EXACT LOCATION AND MOUNTING HEIGHTS OF ALL LIGHTING FIXTURES.
2. EACH CONDUIT SHALL BE LIMITED TO (3) CIRCUITS MAXIMUM.
3. ALL LIGHTING BRANCH CIRCUIT CONDUITS SHALL CONTAIN A GROUND WIRE, USING THE CONDUIT SYSTEM AS THE ONLY GROUND PATH IS NOT ACCEPTABLE.
4. ELECTRICIAN OF RECORD, & BONDED PER DIVISION 0-"CONTRACT" SPECIFICATIONS, AND BE FAMILIAR & EXPERIENCED WITH SUCH WORK INDICATED HEREIN, & QUALIFIED BY MOST RECENT OSHA CERTIFICATION TO WORK ON ENERGIZED EQUIPMENT. REFER TO & COMPLY WITH OSHA 29CFR.1910 & 1926 ELECTRICAL SAFETY PORTIONS, CONSTRUCTION METHOD AND MEANS AND THEIR REQUIREMENTS. CONTRACTOR SHALL PROVIDE WORK WITHIN STANDARD OF CARE FOR PROFESSION.
5. REFER TO SHEET E4.1 FOR LIGHT FIXTURE SCHEDULE.
6. MOUNT ALL LIGHT SWITCHES AT +54" A.F.F. UNLESS OTHERWISE NOTED.
7. ALL ELECTRICAL WORK INCLUDED IN THIS PROJECT SHALL MEET THE REQUIREMENTS OF THE 2011 NATIONAL ELECTRICAL CODE (N.E.C.).
8. COORDINATE EXACT LOCATION OF ALL LIGHT SWITCHES WITH OWNER PRIOR TO ROUGH-IN. SWITCHES LOCATED SIDE-BY-SIDE SHALL BE GANGED UNDER COMMON COVERPLATE.
9. ALL EXIT AND EMERGENCY WALL UNITS SHALL BE WIRED WITH A CONSTANT HOT.
10. CONTRACTOR TO CONTACT TREVOR CONE WITH LESCO AT (713) 923-7781 FOR PROGRAMMING OF LEVITON RELAY PANEL 30 DAYS PRIOR TO INSTALLATION. ENGINEER TO BE PRESENT WHEN PROGRAMMING TO INSURE CORRECT DESIGN INTENT GETS IMPLEMENTED FOR ENTIRE REVIEW.

ELECTRICAL KEYED NOTES:
(FOR SHEET E1.1)

1. EMERGENCY EGRESS LIGHT FIXTURE IS TO BE CONNECTED TO UN-SWITCHED LEG OF EXISTING HOUSE EXTERIOR LIGHTING CIRCUIT. FIELD VERIFY EXISTING CONDITIONS.
2. PROVIDE LEVITON #R24BD-124 Z-MAX RELAY CABINET. REFER TO DETAIL #2 ON SHEET 3.1 FOR MORE INFORMATION.
3. PROVIDE LEVITON #00LWS-01W Z-MAX LOW-VOLTAGE 1-BUTTON SWITCH STATION FOR MASTER OVERRIDE ON/OFF SWITCH FOR DINING LIGHTING CIRCUITS. REFER TO DETAIL #2 ON THIS SHEET FOR MORE INFORMATION.
4. PROVIDE "LEVITON" #0SSMT-MDT, DUAL TECHNOLOGY WALL MOUNTED MOTION SENSOR FOR AUTOMATIC CONTROL OF LIGHTS IN THIS ROOM. COORDINATE WITH OWNER/ARCHITECT FOR TIME-OUT ON SENSOR.
5. PROVIDE "LEVITON" #0SC10-MOW, DUAL TECHNOLOGY CEILING MOUNTED MOTION SENSOR CONNECTED TO SWITCH PACK FOR AUTOMATIC CONTROL OF LIGHTS IN THIS ROOM. COORDINATE WITH OWNER/ARCHITECT FOR TIME-OUT ON SENSOR.
6. PROVIDE "LEVITON" #MN10-1LW, FLUORESCENT "MONET" SLIDE DIMMER.
7. PROVIDE "LEVITON" #MN10-1LW, INCANDESCENT "MONET" SLIDE DIMMER.
8. SWITCH BANK LOCATION. REFER TO DETAIL #3 ON SHEET E3.1 FOR EXACT ARRANGEMENT OF SWITCHES.
9. EXISTING WALL MOUNTED FLUORESCENT LIGHT FIXTURE TO REMAIN. FIELD VERIFY THAT FIXTURE CONTAINS EMERGENCY BATTERY BACK-UP CAPABLE OF OPERATING FOR 90 MINUTES UPON LOSS OF POWER. RE-LAMP FIXTURE.
10. REFER TO SHEET E2.2 FOR NEW FREEZER LIGHTING REQUIREMENTS.
11. EXISTING COOLER LIGHTING TO REMAIN. RE-LAMP FIXTURE.
12. EXISTING HOOD LIGHTING TO REMAIN. RE-LAMP FIXTURE.
13. DINING ROOM LIGHTING-HOMERUN TO PANEL L2 VIA RELAY PANEL. PROGRAM RELAY R1 ON THE FOLLOWING SCHEDULE: TURN ON VIA TIMECLOCK AT 6:00 A.M. TURN OFF VIA ASTRONOMICAL TIME CLOCK AT 1:00 AM. VERIFY THE SCHEDULING REQUIREMENTS WITH OWNER AND MAKE ADJUSTMENTS AS NECESSARY. LOW-VOLTAGE SWITCH SHALL OVERRIDE TIME CLOCK IN THE EVENT ACCESS TO LIGHTING IS REQUIRED DURING SCHEDULED TIME-OUT OF CIRCUIT.
14. DINING ROOM LIGHTING-HOMERUN TO PANEL L2 VIA RELAY PANEL. PROGRAM RELAY R2 ON THE FOLLOWING SCHEDULE: TURN ON VIA TIMECLOCK AT 6:00 A.M. TURN OFF VIA ASTRONOMICAL TIME CLOCK AT 1:00 AM. VERIFY THE SCHEDULING REQUIREMENTS WITH OWNER AND MAKE ADJUSTMENTS AS NECESSARY. LOW-VOLTAGE SWITCH SHALL OVERRIDE TIME CLOCK IN THE EVENT ACCESS TO LIGHTING IS REQUIRED DURING SCHEDULED TIME-OUT OF CIRCUIT.
15. DINING COVE ROOM LIGHTING-HOMERUN TO PANEL L2 VIA RELAY PANEL. PROGRAM RELAY R3 ON THE FOLLOWING SCHEDULE: TURN ON VIA TIMECLOCK AT 6:00 A.M. TURN OFF VIA ASTRONOMICAL TIME CLOCK AT 1:00 AM. VERIFY THE SCHEDULING REQUIREMENTS WITH OWNER AND MAKE ADJUSTMENTS AS NECESSARY. LOW-VOLTAGE SWITCH SHALL OVERRIDE TIME CLOCK IN THE EVENT ACCESS TO LIGHTING IS REQUIRED DURING SCHEDULED TIME-OUT OF CIRCUIT.
16. DINING ROOM LIGHTING-HOMERUN TO PANEL L2 VIA RELAY PANEL. PROGRAM RELAY R4 ON THE FOLLOWING SCHEDULE: TURN ON VIA TIMECLOCK AT 6:00 A.M. TURN OFF VIA ASTRONOMICAL TIME CLOCK AT 1:00 AM. VERIFY THE SCHEDULING REQUIREMENTS WITH OWNER AND MAKE ADJUSTMENTS AS NECESSARY. LOW-VOLTAGE SWITCH SHALL OVERRIDE TIME CLOCK IN THE EVENT ACCESS TO LIGHTING IS REQUIRED DURING SCHEDULED TIME-OUT OF CIRCUIT.
17. TRACK LIGHTING-HOMERUN TO PANEL L2 VIA RELAY PANEL. PROGRAM RELAY R5 ON THE FOLLOWING SCHEDULE: TURN ON VIA TIMECLOCK AT 6:00 A.M. TURN OFF VIA ASTRONOMICAL TIME CLOCK AT 1:00 AM. VERIFY THE SCHEDULING REQUIREMENTS WITH OWNER AND MAKE ADJUSTMENTS AS NECESSARY. LOW-VOLTAGE SWITCH SHALL OVERRIDE TIME CLOCK IN THE EVENT ACCESS TO LIGHTING IS REQUIRED DURING SCHEDULED TIME-OUT OF CIRCUIT.
18. ORDER AREA LIGHTING-HOMERUN TO PANEL L2 VIA RELAY PANEL. PROGRAM RELAY R6 ON THE FOLLOWING SCHEDULE: TURN ON VIA TIMECLOCK AT 6:00 A.M. TURN OFF VIA ASTRONOMICAL TIME CLOCK AT 1:00 AM. VERIFY THE SCHEDULING REQUIREMENTS WITH OWNER AND MAKE ADJUSTMENTS AS NECESSARY. LOW-VOLTAGE SWITCH SHALL OVERRIDE TIME CLOCK IN THE EVENT ACCESS TO LIGHTING IS REQUIRED DURING SCHEDULED TIME-OUT OF CIRCUIT.
19. PRIVATE DINING LIGHTING-HOMERUN TO PANEL L2 VIA RELAY PANEL. PROGRAM RELAY R7 ON THE FOLLOWING SCHEDULE: TURN ON VIA TIMECLOCK AT 6:00 A.M. TURN OFF VIA ASTRONOMICAL TIME CLOCK AT 1:00 AM. VERIFY THE SCHEDULING REQUIREMENTS WITH OWNER AND MAKE ADJUSTMENTS AS NECESSARY. LOW-VOLTAGE SWITCH SHALL OVERRIDE TIME CLOCK IN THE EVENT ACCESS TO LIGHTING IS REQUIRED DURING SCHEDULED TIME-OUT OF CIRCUIT.
20. OUTDOOR LIGHTING-HOMERUN TO PANEL L2 VIA RELAY PANEL. PROGRAM RELAY R8 ON THE FOLLOWING SCHEDULE: TURN ON VIA TIMECLOCK AT 7:00 P.M. TURN OFF VIA OVERRIDE SWITCH. VERIFY THE SCHEDULING REQUIREMENTS WITH OWNER AND MAKE ADJUSTMENTS AS NECESSARY. LOW-VOLTAGE SWITCH SHALL OVERRIDE TIME CLOCK IN THE EVENT ACCESS TO LIGHTING IS REQUIRED DURING SCHEDULED TIME-OUT OF CIRCUIT.
21. MOUNT EMERGENCY LIGHTING UNIT AT +10'-0" A.F.F..
22. PROVIDE BLUE SLEEVES OVER LAMPS OF ALL FIXTURES MOUNTED IN THIS COVE.
23. PROVIDE GREEN SLEEVES OVER LAMPS OF ALL FIXTURES MOUNTED IN THIS COVE.

1 ELECTRICAL FLOOR PLAN - LIGHTING
SCALE: 3/16" = 1'-0"

HARRELL
ARCHITECTS, LP

9575 Katy Frwy., #200
Houston, Texas 77024
tel: 713.722.7071
fax: 713.722.7072

CONSULTANTS
Holste & Associates, Inc.
Consulting Engineers - Texas Reg. F-5443
6671 Southwest Freeway, Suite 500
Houston, Texas 77055 (713) 999-1301
www.holsteap.com
Contact: Kris Olden (832) 613-0968

PROJECT NAME



Cafe Express Restaurant

PROJECT ADDRESS
3600 SW. Freeway, Suite 124
Houston, Texas 77027

PROJECT NUMBER

11039
SHEET NAME

**ELECTRICAL
LIGHTING PLAN**

SHEET NUMBER

E1.1