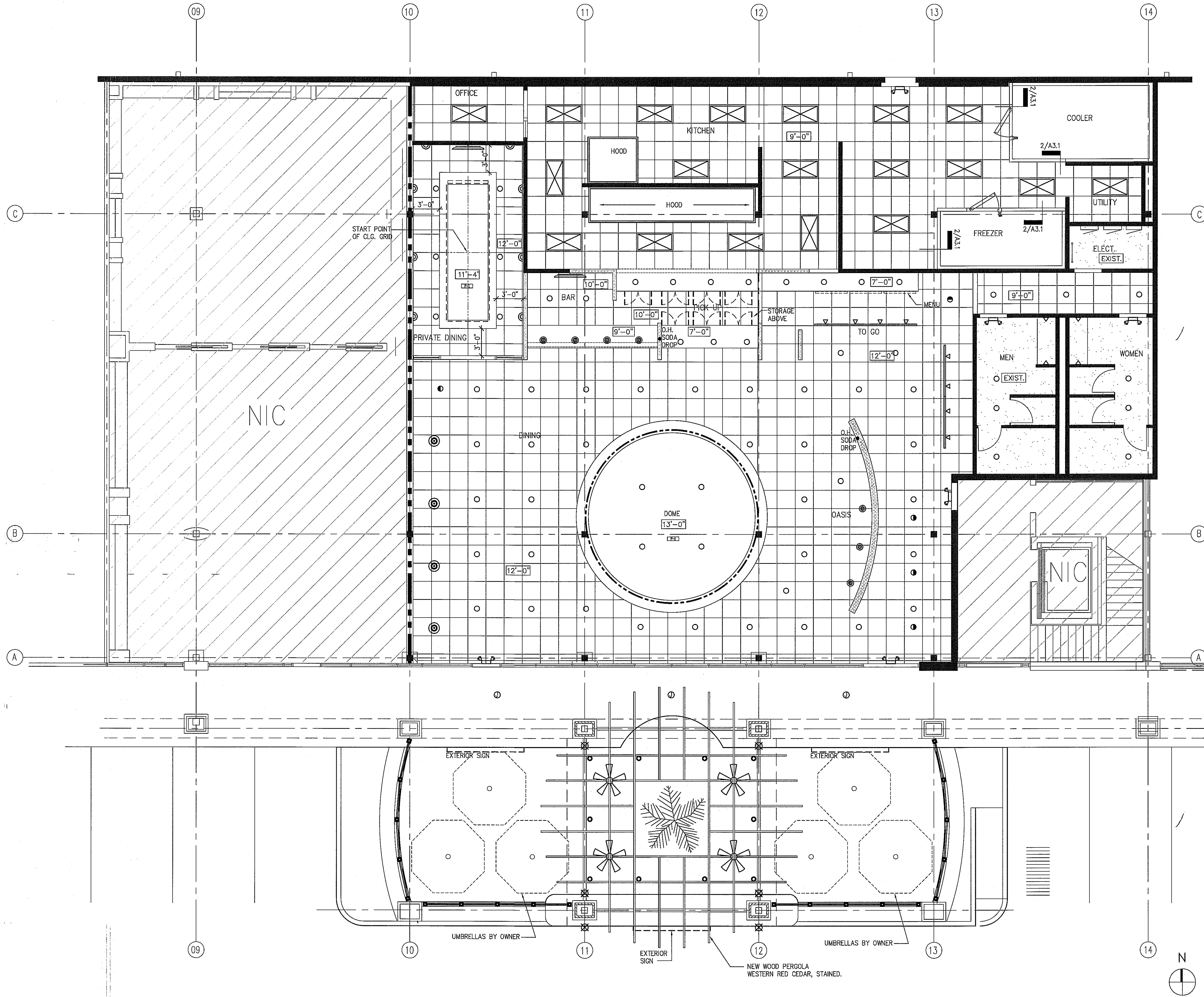


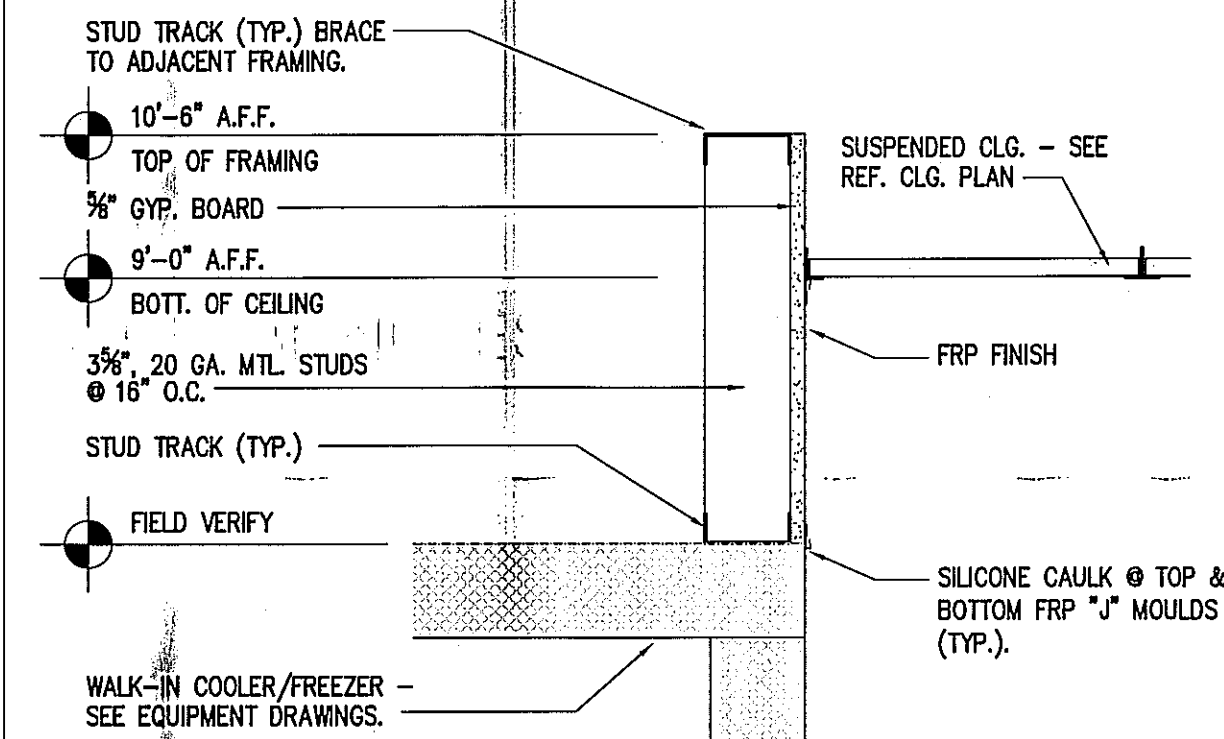
ISSUE
 10-20-11 OWNER REVIEW
 10-24-11 LANDLORD REVIEW
 11-03-11 ISSUED FOR PERMIT/PRICING



- 2x4 RECESSED FLUORESCENT LIGHT FIXTURE
- 2x4 RECESSED FLUORESCENT LIGHT FIXTURE W/ EMERGENCY BATTERY BACKUP
- LED COVE FIXTURE - GREEN COLOR
- LED COVE FIXTURE - BLUE COLOR
- TRACK LIGHT FIXTURE
- VANITY WALL SCONCE
- DECORATIVE WALL SCONCE @ PRIVATE DINING ROOM
- EXTERIOR WALL SCONCE @ PERGOLA
- EXTERIOR CYLINDER DOWN LIGHT @ PERGOLA
- FAN
- PENDANT LIGHT
- EMERGENCY LIGHT
- RECESSED DOWNLIGHT
- RECESSED DIRECTIONAL DOWNLIGHT
- 2x2 LAY-IN CEILING TILE
- GYP. BOARD CEILING

NOTE: REFER TO MECHANICAL & ELECTRICAL DRAWINGS FOR SPECIFIC LIGHT & DIFFUSER INFORMATION.

LEGEND



SOFFIT DETAIL 1-1/2" = 1'-0" 2

HARRELL
 ARCHITECTS, LP

9575 Katy Frwy., #200
 Houston, Texas 77024
 tel: 713.722.7071
 fax: 713.722.7072

CONSULTANTS
 Holste & Associates, Inc.
 MEP Engineers

PROJECT NAME



Cafe Express Restaurant

PROJECT ADDRESS
 3600 SW Freeway, Suite 124
 Houston, Texas 77027

PROJECT NUMBER

11039

SHEET NAME

**REFLECTED
 CEILING PLAN**

SHEET NUMBER

A3.1